

# Quote Request

## Disposition of 7 Vehicles & Lots A – F of Miscellaneous Items

Quotes due December 12, 2025, at 10:00 a.m.

Email to [kathleen.obringer@hacp.org](mailto:kathleen.obringer@hacp.org)

## Scope of Work

Housing Authority of the City of Pittsburgh (HACP) has identified seven (7) vehicles to be sold and six (6) lots A-F of miscellaneous items. To support HACP's goal of streamlined operations, HACP has decided to reduce its level of inventory through a silent auction process. These items are available for purchase from the general public. The items for sale are seven (7) vehicles plus six (6) lots of miscellaneous items.

*Sales will be made to the highest bidder. Items will be sold as-is, with no warranty implied or expressed. Returns are not allowed. Sales are considered "final" once the HACP Finance Department receives payment.*

***Please read the following terms and conditions carefully.***

1. **Acceptance of Terms and Conditions.** By submitting a bid, the bidder agrees that they have read, fully understand and accept these Terms and Conditions. Once the bids are accepted by the HACP, the winning bidder agrees to pay for and remove the property by the dates and times specified.
2. **Guaranty Waiver.** All property is offered for sale "AS IS, WHERE IS". The HACP makes no warranty, guaranty or representation of any kind, expressed or implied, as to the merchantability or fitness for any purpose of the property offered for sale. The Buyer is not entitled to any payment for loss of profit or any other money damages - special, direct, indirect or consequential.
3. **Personal and Property Risk.** People attending during inspection, exhibition, sale or removal of goods assume all risks of damage or loss to person and property and specifically release the HACP from liability.
4. **Inspection.** Bidders may inspect the vehicles prior to bidding on the following date: **December 10, 2025, from 9:00 a.m. to 12:00 p.m. NO EXCEPTIONS** at the Northview Heights Maintenance area 643 Mt. Pleasant (rear), Pittsburgh, PA 15214. Bidders should be aware they will be asked to show their ID at the security gate upon arrival at Northview Heights.
5. **Bidding Process.** Bidders can place bids with HACP using an HACP Excess Inventory Bidding Form. The bid must be submitted in a sealed envelope with "Inventory Surplus" identified on envelope.
6. **Bid Submission.** All bids must be submitted to Kathleen Obringer at [kathleen.obringer@hacp.org](mailto:kathleen.obringer@hacp.org)
7. **Consideration of Bid.** The HACP reserves the right to reject any and all bids and to withdraw from sale any of the items listed. HACP employees are strictly forbidden from placing bids and purchasing surplus HACP inventory.

# Quote Request

## Disposition of 7 Vehicles & Lots A – F of Miscellaneous Items

8. **Buyer's Notification.** Successful bidders will receive notification via email or telephone at the e-mail address and telephone number indicated on the HACP Excess Inventory Bidding Form
9. **Payment.** Payment in full is due no later than **five (5) working days** from the date of the award letter. Acceptable forms of payment are as follows:
  - Cashier's Check
  - Certified Check
  - Money Order
  - Company Check (with Bank letter guaranteeing payment - **mandatory**)  
**Checks or Money Orders shall be made payable to the Housing Authority of the City of Pittsburgh.** Payments shall be made at the location listed in the Award Letter.

HACP will have a notary present along with our CFO to coordinate the title transfer. Please be at Northview Heights from **12:00 to 2:00 p.m. on December 19, 2025.**

10. **Removal.** All awarded items must be removed on **December 19, 2025, between the hours of 12:00 p.m. - 4:00 p.m.** Receipt of payment must have been received by HACP. Purchases will be released only upon receipt of payment as specified. Successful bidders are responsible for loading and removal of any and all property awarded to them from the place where the property is located as indicated on the bid sheet. The Buyer will make all arrangements and perform all work necessary, including packing, loading and transportation of the property. Under no circumstances will the HACP assume responsibility for packing, loading or shipping. Please contact **Dereen Neice, Senior Director of Procurement** at: **(412) 643-2800** or by email at [Dereen.Neice@hacp.org](mailto:Dereen.Neice@hacp.org) in advance to schedule an appointed date, time, for pick-up at Northview Heights Maintenance area, 643 Mt. Pleasant (rear), Pittsburgh, PA 15214.
11. **Default.** Default shall include (1) failure to observe these terms and conditions; (2) failure to make good and timely payment; or (3) failure to remove all items within the specified time. Default may result in termination and suspension from participation in all future sales until the default has been cured. If the Buyer fails in the performance of their obligations, **HACP** may exercise such rights and may pursue such remedies as are provided by law.
12. **Other.** Independent Appraisal for each vehicle will be available at the site visit.
  - The awardee must pay for and remove all vehicles awarded to them.
  - All awarded lots must be removed by **December 19, 2025, from 12:00 p.m. to 4:00 p.m. NO EXCEPTIONS**
  - Each vehicle is a separate lot

For more information or questions, please contact Kathleen Obringer at (412)-643-2766 or [kathleen.obringer@hacp.org](mailto:kathleen.obringer@hacp.org)

# Quote Request

Disposition of 7 Vehicles & Lots A – F  
of Miscellaneous Items

**Quotes due December 12, 2025 at 10:00 a.m.**

<b>Lot</b>	<b>Description</b>	<b>Est. Mileage</b>	<b>Minimum Bid Accepted</b>
Lot 1	2013 Ford F-350 Super Duty Super Cab VIN: 1FT7X3B68DEB30324	24,267	\$3,500
Lot 2	2013 Ford F-350 Super Duty Super Cab VIN: 1FT7X3B66DEB30323	46,047	\$4,250
Lot 3	2013 Ford F-350 Super Duty Super Cab VIN: 1FT7X3B6TDEB30329	80,864	\$4,250
Lot 4	2011 Chevrolet Express 3500 Cargo Van VIN: 1GCZGTCG2B1117542	57,948	\$3,750
Lot 5	2011 Ford Escape VIN: 1FMCU9C73BKB36124	64,632	\$1,500
Lot 6	2015 Ford Transit T250 Van VIN: 1FTNR1CM1FKA59541	52,802	\$3,500
Lot 7	2015 Ford Transit T250 Van VIN: 1FTNR1CMXFKA59537	77,939	\$3,500

**You must pay for and remove all the lots you are awarded.**  
The vendor must take **ALL** awarded lots, or you will receive none.  
Include this page with your bid.

# Quote Request

Disposition of 7 Vehicles & Lots A – F  
of Miscellaneous Items

Quotes due December 12, 2025 @ 10:00 a.m.

**Lot 1 - 2013 Ford F350 Super Duty Super Cab VIN: 1FT7X3B68DEB30324**

Total Cost: \$ \_\_\_\_\_

Total Cost: \$ \_\_\_\_\_

(in words)

**Lot 2 - 2013 Ford F350 Super Duty Super Cab VIN: 1FT7X3B66DEB30323**

Total Cost: \$ \_\_\_\_\_

Total Cost: \$ \_\_\_\_\_

(in words)

**Lot 3 - 2013 Ford F350 Super Duty Super Cab VIN: 1FT7X3B6TDEB30329**

Total Cost: \$ \_\_\_\_\_

Total Cost: \$ \_\_\_\_\_

(in words)

**Lot 4 - 2011 Chevrolet Express 3500 Cargo Van VIN: 1GCZGTCG2B1117542**

Total Cost: \$ \_\_\_\_\_

Total Cost: \$ \_\_\_\_\_

(in words)

**Lot 5 - 2011 Ford Escape VIN: 1FMCU9C73BKB36124**

Total Cost: \$ \_\_\_\_\_

Total Cost: \$ \_\_\_\_\_

(in words)

**Lot 6 - 2015 Ford Transit T250 Van VIN: 1FTNR1CM1FKA59541**

Total Cost: \$ \_\_\_\_\_

Total Cost: \$ \_\_\_\_\_

(in words)

# Quote Request

Disposition of 7 Vehicles & Lots A – F  
of Miscellaneous Items

**Lot 7 - 2015 Ford Transit T250 Van      VIN: 1FTNR1CMXFKA59537**

Total Cost: \$ \_\_\_\_\_

Total Cost: \$ \_\_\_\_\_

(in words)

**Lot A – John Deere W/Canopy 1600 Turbo**

Total Cost: \$ \_\_\_\_\_

Total Cost: \$ \_\_\_\_\_

(in words)

**Lot B – Holland Blue Tractor & Equipment Repair**

Total Cost: \$ \_\_\_\_\_

Total Cost: \$ \_\_\_\_\_

(in words)

**Lot C – John Deere Gator with Cab & Equipment Repair**

Total Cost: \$ \_\_\_\_\_

Total Cost: \$ \_\_\_\_\_

(in words)

**Lot D – John Deere Riding Tractor, John Deere Hydro Tractor, Equipment Repair**

Total Cost: \$ \_\_\_\_\_

Total Cost: \$ \_\_\_\_\_

(in words)

# Quote Request

Disposition of 7 Vehicles & Lots A – F  
of Miscellaneous Items

## **Lot E – Equipment Repair**

Total Cost: \$ \_\_\_\_\_

Total Cost: \$ \_\_\_\_\_

(in words)

## **Lot F – Obsolete Inventory (15 pages)**

Total Cost: \$ \_\_\_\_\_

Total Cost: \$ \_\_\_\_\_

(in words)

# Quote Request

Disposition of 7 Vehicles & Lots A – F  
of Miscellaneous Items

The award will be based on highest responsive and responsible  
bid amount.

(Please print clearly)

Company Name: \_\_\_\_\_

Address: \_\_\_\_\_  
(of company)

Signature: \_\_\_\_\_

Print Name: \_\_\_\_\_  
(of person signing)

Phone Number: \_\_\_\_\_ Fax: \_\_\_\_\_

\_\_\_\_\_ Email: \_\_\_\_\_

*Note: Bids will be evaluated for reasonableness based upon Blue Book values and other available data. HACP reserves the right to reject any offer and rebid if offers do not meet acceptable prices.*

# Quote Request

Disposition of 7 Vehicles & Lots A – F  
of Miscellaneous Items

## Lot 1 – 2013 Ford F350 Super Duty Super Cab

Vin: 1FT7X3B68DEB30324

### VEHICLE CHECKLIST

Vehicle Make: Ford

Vehicle Model: F350 Super Duty Super Cab

Vehicle Color: White

Mileage: 24, 267

OTHER INFORMATION	YES	NO
Is vehicle drive able?	<b>X</b>	
Does it start?	<b>X</b>	
Any visible damage?	<b>X</b>	
Does it have more than one set of keys?	<b>X</b>	
Does it have AC?	<b>X</b>	
Does it have heat?	<b>X</b>	
Is the emission current?		<b>X</b>

Notes: Rust - Driver's door screwed on with screws. Frame – end of useful life and did not pass inspection.

# Quote Request

Disposition of 7 Vehicles & Lots A – F  
of Miscellaneous Items

## Lot 1- 2013 Ford F350 Super Duty Super Cab



# Quote Request

Disposition of 7 Vehicles & Lots A – F  
of Miscellaneous Items

## Lot 1 - 2013 Ford F350 Super Duty Super Cab



# Quote Request

Disposition of 7 Vehicles & Lots A – F  
of Miscellaneous Items

## Lot 1 - 2013 Ford F350 Super Duty Super Cab



# Quote Request

Disposition of 7 Vehicles & Lots A – F  
of Miscellaneous Items

## **Lot 1 - 2013 Ford F350 Super Duty Super Cab**



# Quote Request

Disposition of 7 Vehicles & Lots A – F  
of Miscellaneous Items

## Lot 2 – 2013 Ford F350 Super Duty Super Cab

Vin: 1FT7X3B66DEB30323

### VEHICLE CHECKLIST

Vehicle Make: Ford

Vehicle Model: F350 Super Duty Super Cab

Vehicle Color: White

Mileage 46,047

OTHER INFORMATION	YES	NO
Is vehicle drive able?	X	
Does it start?	X	
Any visible damage?	X	
Does it have more than one set of keys?	X	
Does it have AC?	X	
Does it have heat?	X	
Is the emission current?	X	

Notes: Frame and body rusting, end of its useful life.

# Quote Request

Disposition of 7 Vehicles & Lots A – F  
of Miscellaneous Items

## Lot 2 – 2013 Ford F350 Super Duty Super Cab



# Quote Request

Disposition of 7 Vehicles & Lots A – F  
of Miscellaneous Items

**Lot 2 – 2013 Ford F350 Super Duty Super Cab**



# Quote Request

Disposition of 7 Vehicles & Lots A – F  
of Miscellaneous Items

## Lot 2 – 2013 Ford F350 Super Duty Super Cab



# Quote Request

Disposition of 7 Vehicles & Lots A – F  
of Miscellaneous Items

## Lot 2 – 2013 Ford F350 Super Duty Super Cab



# Quote Request

Disposition of 7 Vehicles & Lots A – F  
of Miscellaneous Items

## Lot 3 – 2013 Ford F350 Super Duty Super Cab

Vin: 1FT7X3B6TDEB30329

### VEHICLE CHECKLIST

Vehicle Make: Ford

Vehicle Model: F350 Super Duty Super Cab

Vehicle Color: White

Mileage: 80,864

OTHER INFORMATION	YES	NO
Is vehicle drive able?	X	
Does it start?	X	
Any visible damage?	X	
Does it have more than one set of keys?	X	
Does it have AC?	X	
Does it have heat?	X	
Is the emission current?	X	

Notes: Frame and body rusting, end of its useful life. Didn't pass inspection.

# Quote Request

Disposition of 7 Vehicles & Lots A – F  
of Miscellaneous Items

**Lot 3 – 2013 Ford F350 Super Duty Super Cab**



# Quote Request

Disposition of 7 Vehicles & Lots A – F  
of Miscellaneous Items

## Lot 3 – 2013 Ford F350 Super Duty Super Cab



# Quote Request

Disposition of 7 Vehicles & Lots A – F  
of Miscellaneous Items

**Lot 3 – 2013 Ford F350 Super Duty Super Cab**



# Quote Request

Disposition of 7 Vehicles & Lots A – F  
of Miscellaneous Items

## Lot 3 – 2013 Ford F350 Super Duty Super Cab



# Quote Request

Disposition of 7 Vehicles & Lots A – F  
of Miscellaneous Items

## Lot 4 – 2011 Chevrolet Express 3500 Cargo Van

Vin: **1GCZGTCG2B1117542**

### VEHICLE CHECKLIST

Vehicle Make: Chevrolet Vehicle Model: Express 3500 Cargo Van

Vehicle Color: White Mileage: 57,948

OTHER INFORMATION	YES	NO
Is vehicle drive able?	X	
Does it start?	X	
Any visible damage?	X	
Does it have more than one set of keys?	X	
Does it have AC?	X	
Does it have heat?	X	
Is the emission current?	X	

Notes: Frame and body rusting, end of its useful life.

# Quote Request

Disposition of 7 Vehicles & Lots A – F  
of Miscellaneous Items

## Lot 4 – 2011 Chevrolet Express 3500 Cargo Van



# Quote Request

Disposition of 7 Vehicles & Lots A – F  
of Miscellaneous Items

## Lot 4 – 2011 Chevrolet Express 3500 Cargo Van



# Quote Request

Disposition of 7 Vehicles & Lots A – F  
of Miscellaneous Items

## Lot 4 – 2011 Chevrolet Express 3500 Cargo Van



# Quote Request

Disposition of 7 Vehicles & Lots A – F  
of Miscellaneous Items

## **Lot 4 – 2011 Chevrolet Express 3500 Cargo Van**



# Quote Request

Disposition of 7 Vehicles & Lots A – F  
of Miscellaneous Items

## Lot 5 – 2011 Ford Escape

Vin: 1FMCU9C73BKB36124

### VEHICLE CHECKLIST

Vehicle Make: Ford

Vehicle Model: Escape

Vehicle Color: White

Mileage: 64,632

OTHER INFORMATION	YES	NO
Is vehicle drive able?	X	
Does it start?	X	
Any visible damage?	X	
Does it have more than one set of keys?	X	
Does it have AC?	X	
Does it have heat?	X	
Is the emission current?	X	

Notes: Rust, end of useful life. Broken ignition – Under dash panel off

# Quote Request

Disposition of 7 Vehicles & Lots A – F  
of Miscellaneous Items

## Lot 5 – 2011 Ford Escape



# Quote Request

Disposition of 7 Vehicles & Lots A – F  
of Miscellaneous Items

## Lot 5 – 2011 Ford Escape



# Quote Request

Disposition of 7 Vehicles & Lots A – F  
of Miscellaneous Items

## Lot 5 – 2011 Ford Escape



# Quote Request

Disposition of 7 Vehicles & Lots A – F  
of Miscellaneous Items

## Lot 5 – 2011 Ford Escape



# Quote Request

Disposition of 7 Vehicles & Lots A – F  
of Miscellaneous Items

## Lot 6 – 2015 Ford Transit T250 Van

Vin: 1FTNR1CM1FKA59541

### VEHICLE CHECKLIST

Vehicle Make: Ford

Vehicle Model: Ford Transit T250 Van

Vehicle Color: White

Mileage: 58,802

OTHER INFORMATION	YES	NO
Is vehicle drive able?	X	
Does it start?	X	
Any visible damage?	X	
Does it have more than one set of keys?	X	
Does it have AC?	X	
Does it have heat?	X	
Is the emission current?	X	

Notes: Missing driver's door cylinder

# Quote Request

Disposition of 7 Vehicles & Lots A – F  
of Miscellaneous Items

## Lot 6 – 2015 Ford Transit T250 Van



# Quote Request

Disposition of 7 Vehicles & Lots A – F  
of Miscellaneous Items

## Lot 6 – 2015 Ford Transit T250 Van



# Quote Request

Disposition of 7 Vehicles & Lots A – F  
of Miscellaneous Items

## Lot 6 – 2015 Ford Transit T250 Van



# Quote Request

Disposition of 7 Vehicles & Lots A – F  
of Miscellaneous Items

## Lot 6 – 2015 Ford Transit T250 Van



# Quote Request

Disposition of 7 Vehicles & Lots A – F  
of Miscellaneous Items

## Lot 7 – 2015 Ford Transit T250 Van

Vin: 1FTNR1CMXFKA59537

### VEHICLE CHECKLIST

Vehicle Make: Ford

Vehicle Model: Ford Transit T250 Van

Vehicle Color: White

Mileage: 77,939

OTHER INFORMATION	YES	NO
Is vehicle drive able?	X	
Does it start?	X	
Any visible damage?	X	
Does it have more than one set of keys?	X	
Does it have AC?	X	
Does it have heat?	X	
Is the emission current?	X	

Notes: Rust, dents on side sliding door. Door doesn't latch shut completely. End of useful life.

# Quote Request

Disposition of 7 Vehicles & Lots A – F  
of Miscellaneous Items

## Lot 7 – 2015 Ford Transit T250 Van



# Quote Request

Disposition of 7 Vehicles & Lots A – F  
of Miscellaneous Items

## Lot 7 – 2015 Ford Transit T250 Van



# Quote Request

Disposition of 7 Vehicles & Lots A – F  
of Miscellaneous Items

## Lot 7 – 2015 Ford Transit T250 Van



# Quote Request

Disposition of 7 Vehicles & Lots A – F  
of Miscellaneous Items

## Lot 7 – 2015 Ford Transit T250 Van



# Quote Request

Disposition of 7 Vehicles & Lots A – F  
of Miscellaneous Items

## Lot A – John Deere 1600 Canopy Trailer

<b>HACP Item Number/ SKU Number</b>	<b>Description</b>	<b>SN</b>	<b>Count</b>
22409	TRACTOR W/CANOPY 1600 TURBO	TCCR715010351	1
295-3960	WIDE AREA MOWER, DP19M7489, BLADE BOLT - JOHN DEERE 1600	N/A	2
295-3965	JOHN DEERE 1600 WIDE AREA MOWER, M123522, WASHER	N/A	10
295-3966	JOHN DEERE 1600 WIDE AREA MOWER, M134305, DEFLECTOR	N/A	5

# Quote Request

Disposition of 7 Vehicles & Lots A – F  
of Miscellaneous Items

**Lot A – John Deere W/Canopy 1600 Turbo**



# Quote Request

Disposition of 7 Vehicles & Lots A – F  
of Miscellaneous Items

## Lot A – John Deere W/Canopy 1600 Turbo



# Quote Request

Disposition of 7 Vehicles & Lots A – F  
of Miscellaneous Items

## Lot A – John Deere W/Canopy 1600 Turbo



# Quote Request

Disposition of 7 Vehicles & Lots A – F  
of Miscellaneous Items

## Lot B - Holland Blue Tractor & Equipment Repair

HACP Item Number/ SKU Number	Description	SN	Count
23008	TRACTOR, HOLLAND	1663	1



# Quote Request

Disposition of 7 Vehicles & Lots A – F  
of Miscellaneous Items

## Lot C – John Deere Gator with Cab and Equipment Repair

HACP Item Number/ SKU Number	Description	SN	Count
24778	GATOR, XUV625i W/CAB	1MO625GSHFM100670	1
295-4180	JOHN DEERE GATOR 4 X 2 AND 6 X 4, AM102888, BALL B	N/A	5
295-4185	JOHN DEERE GATOR 4 X 2 AND 6 X 4, AM117324, SWITCH	N/A	1
295-4186	JOHN DEERE GATOR 4 X 2 AND 6 X 4, AM118013, BULB	N/A	2
295-4190	JOHN DEERE GATOR 4 X 2 AND 6 X 4, AM129722, CHOKE	N/A	3
295-4191	JOHN DEERE GATOR 4 X 2 AND 6 X 4, AM130237, THROTT	N/A	2
295-4203	JOHN DEERE GATOR 4 X 2 AND 6 X 4, RE28721, BELT	N/A	4
295-4205	JOHN DEERE GATOR, KIT, WPJD117K	N/A	9
295-5755	JOHN DEERE GATOR PARTS, SHIFTER ROD, M114015	N/A	3
295-5756	JOHN DEERE GATOR PARTS, ROD, VG11313	N/A	1
295-5758	JOHN DEERE GATOR PARTS, COMPRESSION SPRING, M1186	N/A	13
295-5814	JOHN DEERE GATOR PARTS, THERMOSTAT, M123434	N/A	3
295-5816	JOHN DEERE GATOR PARTS, RADIATOR THERMOSTAT, AM11	N/A	4
295-5817	JOHN DEERE GATOR PARTS, RADIATOR FAN, AM133742	N/A	1
295-5822	JOHN DEERE GATOR PARTS, CARBURETOR, AM1222006	N/A	3
295-5823	JOHN DEERE GATOR PARTS, HEATER, MIU11211	N/A	2
295-5824	JOHN DEERE GATOR PARTS, INTAKE GASKET, M113714	N/A	7
295-5826	JOHN DEERE GATOR PARTS, WIRE HARNESS, AM127193	N/A	2
295-5827	JOHN DEERE GATOR PARTS, PARKING BRAKE SWITCH, AM1	N/A	5
295-5834	JOHN DEERE GATOR PARTS, BALL BEARING, AM116934	N/A	6
295-5835	JOHN DEERE GATOR PARTS, BALL BEARING, AM117980	N/A	7
295-5897	JOHN DEERE GATOR PARTS, SHIFTER ROD(4X2), M117647	N/A	4
295-5898	JOHN DEERE GATOR PARTS, LOCK NUT,14M7400	N/A	10

# Quote Request

## Disposition of 7 Vehicles & Lots A – F of Miscellaneous Items

295-5899	JOHN DEERE GATOR PARTS, NUT, 14M7274	N/A	44
295-6046	JOHN DEERE GATOR PARTS, BULB, 57M7492	N/A	7
295-6170	LAMP FOR JOHN DEERE GATOR #AM126083	N/A	1
295-6171	SIDE LIGHT FOR JOHN DEERE GATOR #AL58739	N/A	3
295-6172	LATCH FOR JOHN DEERE GATOR#VGA12139	N/A	3
295-6173	LATCH FOR JOHN DEERE GATOR #VGA12138	N/A	2
295-6181	JOHN DEERE GATOR BRACKET#M136299	N/A	2
295-6182	JOHN DEERE GATOR BRACKET#M136301	N/A	3
295-6184	JOHN DEERE GATOR BOLT #03M7346	N/A	31
295-6185	JOHN DEERE GATOR LOCK NUT #14M7397	N/A	20

# Quote Request

Disposition of 7 Vehicles & Lots A – F  
of Miscellaneous Items

## Lot C – John Deere Gator with Cab and Equipment Repair



# Quote Request

Disposition of 7 Vehicles & Lots A – F  
of Miscellaneous Items

## Lot C – John Deere Gator with Cab and Equipment Repair



# Quote Request

Disposition of 7 Vehicles & Lots A – F  
of Miscellaneous Items  
**Lot D**

## John Deere Riding Tractor, John Deere Hydro Tractor and Equipment Repair

HACP Item Number/ SKU Number	Description	Serial Number	Count
23554	JOHN DEERE RIDING TRACTOR	M0X540A030335	1
23542	48" HYRDO LAWN TRACTOR	GX0130A056353	1
25330	SNOWPLOW 48" JOHN DEERE	1MO48FBJPHM020465	1
NO #	MOWER DECK	N/A	1
NO #	MOWER DECK	N/A	1
NO #	MOWER DECK	N/A	1
NO #	JOHN DEERE PLOW BLADE 44"	M044FBF021458	1
NO #	JOHN DEERE PLOW BLADE	N/A	1
295-3982	JOHN DEERE 212 PARTS, 14H952, WING NUT	N/A	25
295-3988	JOHN DEERE 212 PARTS, AM102557, MOTOR MOUNT	N/A	21
295-3991	JOHN DEERE 212 PARTS, AM103290, SOLENOID	N/A	8
295-3998	JOHN DEERE 212 PARTS, AM31029, CONDENSER	N/A	13
295-4000	JOHN DEERE 212 PARTS, AM31404, POSITIVE BATTERY C	N/A	3
295-4005	JOHN DEERE 212 PARTS, AM33621, CIRCUIT BREAKER	N/A	3
295-4010	JOHN DEERE 212 PARTS, AM36443, NEUTRAL SWITCH	N/A	3
295-4027	JOHN DEERE 212 PARTS, AM39103, SUPPORT	N/A	2
295-4038	JOHN DEERE 212 PARTS, M40569, PIN	N/A	5
295-4040	JOHN DEERE 212 PARTS, M40723, BRAKE LEVER KNOB	N/A	6
295-4045	JOHN DEERE 212 PARTS, M41967, BLADE	N/A	2
295-4051	JOHN DEERE 212 PARTS, M43468, PIN	N/A	6
295-4055	JOHN DEERE 212 PARTS, M47494, AIR FILTER	N/A	16
295-4084	JOHN DEERE 855 PARTS, 1-AR 58126, IGNITION SWITCH	N/A	1
295-4088	JOHN DEERE 855 PARTS, 34H385, SPRING PIN	N/A	69
295-4104	JOHN DEERE 855 PARTS, AM102676, LINK	N/A	4

# Quote Request

## Disposition of 7 Vehicles & Lots A – F of Miscellaneous Items

295-4108	JOHN DEERE 855 PARTS, AM115759, COVR BUCKLE	N/A	6
295-4114	JOHN DEERE 855 PARTS, AM37249, PULLEY	N/A	10
295-4120	JOHN DEERE 855 PARTS, DP34H316, SPRING PIN	N/A	10
295-4123	JOHN DEERE 855 PARTS, DPAM104857, HYDRAULIC CYLIN	N/A	1
295-4125	JOHN DEERE 855 PARTS, DPM 47030, SPRING	N/A	17
295-4130	JOHN DEERE 855 PARTS, LVU15343, PLATE	N/A	4
295-4133	JOHN DEERE 855 PARTS, M113076, BUSHING	N/A	2
295-4134	JOHN DEERE 855 PARTS, M119220, SPRING	N/A	4
295-4136	JOHN DEERE 855 PARTS, M120173, BLADE BOLT	N/A	23
295-4143	JOHN DEERE 855 PARTS, M42809, SPRING COMPRESSION	N/A	1
295-4145	JOHN DEERE 855 PARTS, M44082, EXTENSION SPRING	N/A	9
295-4149	JOHN DEERE 855 PARTS, M76413, RETAINER	N/A	2
295-4153	JOHN DEERE 855 PARTS, M79152, SPRING	N/A	16
295-4159	JOHN DEERE 855 PARTS, M83539, LOCK NUT	N/A	9
295-4160	JOHN DEERE 855 PARTS, M85178, SPACER	N/A	1
295-4166	JOHN DEERE 855 PARTS, M88252, BALL BEARING	N/A	1
295-4170	JOHN DEERE 855 PARTS, M88391, ROD	N/A	6
295-4174	JOHN DEERE 855 PARTS, PT12786, ROLLER CHAIN	N/A	2
295-4208	JOHN DEERE GT35 TRACTOR, AM106627, PULLEY	N/A	5
295-4214	JOHN DEERE GT35 TRACTOR, AM131680, HUB ASSEMBLY	N/A	5
295-4215	JOHN DEERE GT35 TRACTOR, AM131814, PULLEY	N/A	3
295-4216	JOHN DEERE GT35 TRACTOR, 210235, WHEEL DECK	N/A	1
295-4218	JOHN DEERE GT35 TRACTOR, AM37249, PULLEY	N/A	8
295-4220	JOHN DEERE GT35 TRACTOR, LG808656, FUEL PUMP	N/A	1
295-4221	JOHN DEERE GT35 TRACTOR, M110313, BELT V	N/A	4
295-4222	JOHN DEERE GT35 TRACTOR, M110815, SHIELD	N/A	6
295-4224	JOHN DEERE GT35 TRACTOR, M127523, BELT V	N/A	6
295-4225	JOHN DEERE GT35 TRACTOR, M131928, DEFLECTOR	N/A	3
295-4227	JOHN DEERE GT35 TRACTOR, M137555, PRE FILTER	N/A	4

# Quote Request

## Disposition of 7 Vehicles & Lots A – F of Miscellaneous Items

295-4228	JOHN DEERE GT35 TRACTOR, M137556, AIR FILTER	N/A	4
295-4230	JOHN DEERE GT35 TRACTOR, M141974, DECK TENSION SPR	N/A	11
295-4231	JOHN DEERE GT35 TRACTOR, M143338, WHEEL CAP	N/A	10
295-4234	JOHN DEERE GT35 TRACTOR, M71667, CLIP	N/A	10
295-4236	JOHN DEERE GT35 TRACTOR, R27434, SNAP RING	N/A	12
295-4246	JOHN DEERE, BUSHING, D33, DPB10121	N/A	3
295-4247	JOHN DEERE, BUSHING, D33, DPM40815	N/A	5
295-4250	JOHN DEERE, COMPRESSION SPRING, DPM74908	N/A	11
295-4251	JOHN DEERE, COMPRESSION SPRING, DPM76625	N/A	12
295-4253	JOHN DEERE, EXTENSION SPRING, DPM84831	N/A	4
295-4254	JOHN DEERE, EXTENSION SPRING, DPM91397	N/A	12
295-4263	JOHN DEERE, GASKET, DPM805007	N/A	10
295-4268	JOHN DEERE, HYDRAULIC CYLINDER, DPAM124024	N/A	2
295-4269	JOHN DEERE, HYDRAULIC QUICK CONNECT COUPLER, # DPA	N/A	3
295-4272	JOHN DEERE, ISOLATOR, DPM87607	N/A	6
295-4276	JOHN DEERE, MOWER BLADE, BL1-60" STD, DPM141785	N/A	13
295-4279	JOHN DEERE, OIL FILTER, FF7 # DPM806419	N/A	6
295-4280	JOHN DEERE, PIN FASTENER, D8-NR, DPM80814	N/A	6
295-4283	JOHN DEERE, ROLLER, DPAM101042	N/A	3
295-4285	JOHN DEERE, SCREW, C6B, # DPM91371	N/A	17
295-4288	JOHN DEERE, SOLENOID, DPAM102577	N/A	2
295-4294	JOHN DEERE, SPRING, DPA1280R	N/A	8
295-4295	JOHN DEERE, SPRING, DPM76624	N/A	6
295-4296	JOHN DEERE, STARTER MOTOR, DPAM109408	N/A	1
295-4301	JOHN DEERE, TIRE VALVE STEM, DPAM30347	N/A	9
295-4305	JOHN DEERE, WASHER, DP24H1378	N/A	27
295-4306	JOHN DEERE, WASHER, DP24H1821	N/A	88
295-5645	JOHN DEERE 855 PARTS, JD7142 BALL BEARING	N/A	2
295-5656	JOHN DEERE 855 PARTS, CH14631 DIPSTICK	N/A	1
295-5657	JOHN DEERE 855 PARTS, CH14634 O-RING	N/A	3

# Quote Request

## Disposition of 7 Vehicles & Lots A – F of Miscellaneous Items

295-5658	JOHN DEERE 855 PARTS, CH14635 PACKING	N/A	2
295-5674	JOHN DEERE, M12112 COVER	N/A	3
295-5675	JOHN DEERE, M801954 BALL BEARING	N/A	1
295-5676	JOHN DEERE, CH14620 SEAL	N/A	1
295-5677	JOHN DEERE, CH13092 LOCKING COLLAR	N/A	1
295-5679	JOHN DEERE, E79395 SPRING	N/A	1
295-5686	VACUUM SWEEPER, BAG ASSEMBLY, 54582-1 - 3ZJL4	N/A	1
295-5810	JOHN DEERE 855 PARTS, O-RINGS, T77857	N/A	9
295-5813	JOHN DEERE 855 PARTS, CLAMP, M42858	N/A	5
295-5877	JOHN DEERE GT 235 PARTS, TIE ROD, #AM133800	N/A	2
295-5987	JOHN DEERE TRACTOR PARTS, AM118932 SWITCH	N/A	1
295-5988	JOHN DEERE TRACTOR PARTS, M117593 BOOT	N/A	2
295-5990	JOHN DEERE TRACTOR PARTS, M139017 GASKET	N/A	1
295-5991	JOHN DEERE TRACTOR PARTS, M139018 GASKET	N/A	1
295-5994	JOHN DEERE TRACTOR PARTS, TCA15075 ROTARY SWITCH	N/A	1
295-5996	JOHN DEERE TRACTOR PARTS, M127266 COVER	N/A	2
295-6025	JOHN DERRE TRACTOR PART, LOCK NUT, 14M7455	N/A	10
295-6048	JOHN DEEERE TRACTOR PARTS, SWITCH, AM127393	N/A	3
295-6180	GT235 EXTENSION SPRING	N/A	7
295-6268	JOHN DEERE GT235 TRACTOR PART BALL JOINT #AM133692	N/A	3
295-6271	JOHN DEERE GT 235 TRACTOR PART LOCKNUT #14M7367	N/A	7
295-6360	JOHN DEERE 855 TRACTOR NUT #M84972	N/A	16
295-6362	JOHN DEERE 855 TRACTOR HANDLE #M91389	N/A	20
295-6363	JOHN DEERE 855 TRACTOR CLIP #M91390	N/A	20
295-6364	JOHN DEERE 855 TRACTOR SPRING #M91391	N/A	20
295-6451	JOHN DEERE TRACTOR #AM133179 CARBURETOR	N/A	2
295-7021	GASKET, CASE ROCKER #11061-2182 FOR JOHN DEERE TRA - CTOR	N/A	1
295-7051	YOKE #M80373 FOR JOHN DEERE 540 TRACTOR	N/A	6
295-7080	FUEL LINE #90018	N/A	1



# Quote Request

Disposition of 7 Vehicles & Lots A – F  
of Miscellaneous Items

## Lot D – John Deere Riding Tractor, John Deere Hydro Tractor and Equipment Repair



# Quote Request

Disposition of 7 Vehicles & Lots A – F  
of Miscellaneous Items

## Lot D – John Deere Riding Tractor, John Deere Hydro Tractor and Equipment Repair



# Quote Request

Disposition of 7 Vehicles & Lots A – F  
of Miscellaneous Items

## Lot D – John Deere Riding Tractor, John Deere Hydro Tractor and Equipment Repair



# Quote Request

Disposition of 7 Vehicles & Lots A – F  
of Miscellaneous Items

## Lot D – John Deere Riding Tractor, John Deere Hydro Tractor and Equipment Repair



# Quote Request

Disposition of 7 Vehicles & Lots A – F  
of Miscellaneous Items

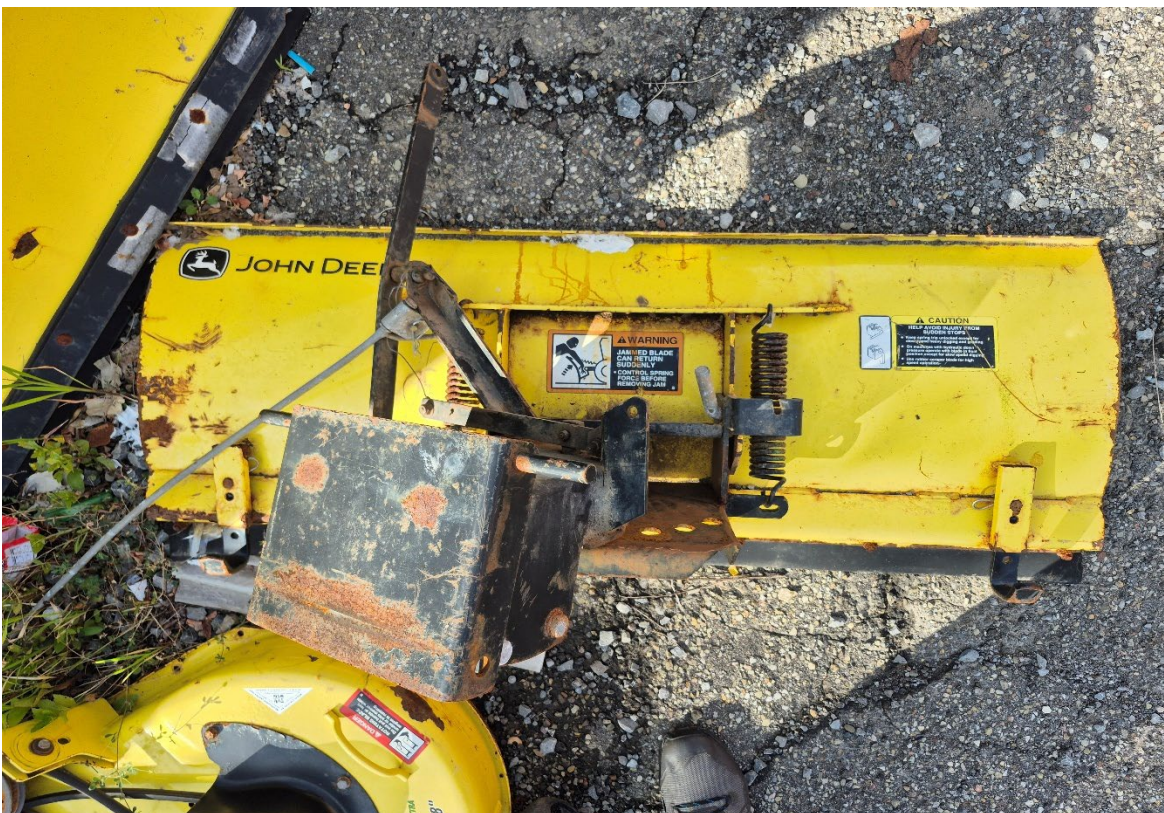
## Lot D – John Deere Riding Tractor, John Deere Hydro Tractor and Equipment Repair



# Quote Request

Disposition of 7 Vehicles & Lots A – F  
of Miscellaneous Items

## Lot D – John Deere Riding Tractor, John Deere Hydro Tractor and Equipment Repair



# Quote Request

Disposition of 7 Vehicles & Lots A – F  
of Miscellaneous Items

## Lot E – Equipment Repair

HACP Item Number/ SKU Number	Description	Serial Number	Count
21163	POWER BRUSH, GRAVELY	2416	1
24644	SNOW BLOWER 26" MODEL 37772	313003539	1
23021	EMERGENCY GENERATOR 600 WATT	8071720	1
26075	FLOOR MACHINE CFP PRO 2HD	CLARKE2015HD016130	1
22620	FLOOR MACHINE 20"	3290	1
20762	FLOOR MACHINE	3318	1
24975	FLOOR SCRUBBER	N/A	1
24362	FLOOR MACHINE	4NEK1-00700	1
NO #	FLOOR MACHINE	N/A	1
NO #	FLOOR MACHINE	N/A	1
NO #	VACUUM SWEEPER	N/A	1
26068	BLACK TORO PUSH MOWER	409619140	1
NO #	RED CRAFTSMAN PUSH MOWER	1C240K72108	1
25045	MOWER #20381 TORO	316013774	1
26469	LAWN MOWER (BLACK)	414283145	1
20800	BLOWER/BACKPACK	SO7483	1
25283	LAWN MOWER 21" MODEL 22290	FJ180VN24503	1
24578	FLOOR STRIPPER	3211490006/13	1
25872	MOWER, TORO 21" HEAVY DUTY	406553114	1
24095	SNOW BLOWER #38624	310012187	1
25145	LAWNMOWER 21"	316011290	1
NO #	TORO PUSH MOWER MODEL 22290	314001845	1
290-215	ELECTRIC EEL, MODEL "C" HANDLE GRIPS	N/A	1
290-350	ELECTRIC EEL MODEL "C" HANDLE CARRYING	N/A	2
290-355	ELECTRIC EEL MODEL "C" CLIP SWITCH (DL-7)	N/A	2
290-360	ELECTRIC EEL MODEL "C" GROUND FAULT CIR. INTERRUPT - W/20 FT. CORD (GFCI)	N/A	1
295-3014	BRIGGS & STRATTON PARTS, 394018S, AIR FILTER	N/A	4
295-3019	BRIGGS & STRATTON PARTS, 691185, REGULATOR	N/A	1

# Quote Request

## Disposition of 7 Vehicles & Lots A – F of Miscellaneous Items

295-3023	BRIGGS & STRATTON PARTS, 691999, WIRE-STOP	N/A	4
295-3033	BRIGGS & STRATTON PARTS, 9692094, FUEL SOLENOID	N/A	2
295-3034	BRIGGS & STRATTON PARTS, FILTER	N/A	3
295-3131	CUB CADET SNOW BLOWER, 9100890A, SHEAR BOLT	N/A	1
295-3139	CUB CADET TRACTOR, 1258401, MODULE)	N/A	3
295-3146	CUB CADET TRACTOR, 4758403, MODULE	N/A	4
295-3149	CUB CADET TRACTOR, 692094, SOLENOID	N/A	2
295-3152	CUB CADET TRACTOR, 719-3009, FRONT MOWER SUPPORT	N/A	3
295-3169	CUB CADET TRACTOR, 954-3001, BELT	N/A	3
295-3179	CUB CADET TRACTOR, 41098195, STARTER	N/A	2
295-3184	CUB CADET TRACTOR, 4587401, PISTON W/RING	N/A	4
295-3188	CUB CADET TRACTOR, 497-401, STARTER	N/A	1
295-3195	CUB CADET TRACTOR, 703-0118, IDLER ARM ASSEMBLY	N/A	1
295-3200	CUB CADET TRACTOR, 703-0648, SPRING TRIP LOCK ASSE	N/A	3
295-3204	CUB CADET TRACTOR, 703-17260498, QUICK LATCH	N/A	5
295-3211	CUB CADET TRACTOR, 710-3024, TRUSS MACHINE SCREW	N/A	9
295-3212	CUB CADET TRACTOR, 711-3024, CLEVIS PIN	N/A	0
295-3213	CUB CADET TRACTOR, 711-3130, BRAKE ROD	N/A	10
295-3215	CUB CADET TRACTOR, 712-3020, TOP LOCK NUT	N/A	8
295-3221	CUB CADET TRACTOR, 719-3008, ADJUSTABLE LIFT LINK	N/A	7
295-3222	CUB CADET TRACTOR, 719-3013, CLEVIS ADJUSTER, 1' L	N/A	3
295-3229	CUB CADET TRACTOR, 725-0978, NEGATIVE BATTERY CABLE	N/A	5
295-3230	CUB CADET TRACTOR, 725-1426, SOLENOID	N/A	1
295-3246	CUB CADET TRACTOR, 732-3004, SEAT SPRING	N/A	3
295-3256	CUB CADET TRACTOR, 746-3038A, THROTTLE CABLE	N/A	2
295-3258	CUB CADET TRACTOR, 747-3012, ADJUSTING BOLT	N/A	1
295-3259	CUB CADET TRACTOR, 747-3013, MOWER SUPPORT PIN	N/A	4
295-3264	CUB CADET TRACTOR, 751-3071, FUEL CAP	N/A	5

# Quote Request

## Disposition of 7 Vehicles & Lots A – F of Miscellaneous Items

295-3266	CUB CADET TRACTOR, 759-3372, BLADE SHAFT	N/A	9
295-3272	CUB CADET TRACTOR, 759-3812, BLADES	N/A	5
295-3274	CUB CADET TRACTOR, 807893, BREATHER ASSEMBLY	N/A	6
295-3279	CUB CADET TRACTOR, 912, 3009, HEX JAM NUT	N/A	7
295-3280	CUB CADET TRACTOR, 912-3018A, OIL SEAL	N/A	42
295-3281	CUB CADET TRACTOR, 912-3019, HEX NUT)	N/A	12
295-3282	CUB CADET TRACTOR, 912-3026, BLADE SHAFT NUT	N/A	12
295-3285	CUB CADET TRACTOR, 919-3091, LIFT LINKAGE ADJUSTER	N/A	8
295-3294	CUB CADET TRACTOR, 932-3001, EXTENSION SPRING	N/A	7
295-3295	CUB CADET TRACTOR, 932-3002, EXTENSION SPRING	N/A	5
295-3303	CUB CADET TRACTOR, 941-3028, SPINDLE BEARING	N/A	20
295-3304	CUB CADET TRACTOR, 947-3160, ADJUSTING ROD	N/A	3
295-3334	ECHO WEED TRIMMER, 12300041030, CARBURETOR or #12520050630	N/A	1
295-3336	ECHO WEED TRIMMER, 12310052130, CARBURETOR KIT	N/A	5
295-3343	ECHO WEED TRIMMER, 10101044331, GASKET	N/A	6
295-3345	ECHO WEED TRIMMER, 130017420031, CARBURETOR ADAPTO	N/A	8
295-3346	ECHO WEED TRIMMER, 13030241030, COVER-AIR	N/A	3
295-3350	ECHO WEED TRIMMER, 13031040930, AIR FILTER	N/A	6
295-3351	ECHO WEED TRIMMER, 13031048930, AIR CLEANER	N/A	6
295-3355	ECHO WEED TRIMMER, 13100546831, TANK FUEL	N/A	1
295-3357	ECHO WEED TRIMMER, 13101041030, TANK FUEL	N/A	4
295-3359	ECHO WEED TRIMMER, 13130056430, GASLET	N/A	2
295-3360	ECHO WEED TRIMMER, 13131239130, FUEL PIPE	N/A	2
295-3361	ECHO WEED TRIMMER, 13191041030, BRACKET-FUEL	N/A	3
295-3365	ECHO WEED TRIMMER, V471001190, FUEL HOSE	N/A	1
295-3366	ECHO WEED TRIMMER, 13201014010, FUEL PIPE	N/A	3
295-3367	ECHO WEED TRIMMER, 13211546730, FUEL GROMMET	N/A	3
295-3368	ECHO WEED TRIMMER, 14551027531, GASKET MUFFLER	N/A	14

# Quote Request

## Disposition of 7 Vehicles & Lots A – F of Miscellaneous Items

295-3369	ECHO WEED TRIMMER, 1456210672, COVER MUFFLER or #A320000251	N/A	4
295-3370	ECHO WEED TRIMMER, 14580642030, MUFFLER (295-or #14580042031	N/A	1
295-3371	ECHO WEED TRIMMER, 14587152130, COVER MUFFLER or #14587144331	N/A	2
295-3379	ECHO WEED TRIMMER, 15262627530, COIL IGNITION5	N/A	3
295-3380	ECHO WEED TRIMMER, 15611240630, GROMMET3380)	N/A	7
295-3381	ECHO WEED TRIMMER, 15680144730, FLYWHEEL	N/A	1
295-3383	ECHO WEED TRIMMER, 15990541030, GUART TOP	N/A	9
295-3384	ECHO WEED TRIMMER, 15991254130, GUARD TOP	N/A	7
295-3385	ECHO WEED TRIMMER, 16340049230, IGNITION SWITCH	N/A	9
295-3386	ECHO WEED TRIMMER, 17500056830, CLUTCH ASSEMBLY	N/A	6
295-3397	ECHO WEED TRIMMER, 17720042033, STARTER ASSEMBLY	N/A	3
295-3398	ECHO WEED TRIMMER, 17720054130, STARTER ASSEMBLY	N/A	5
295-3400	ECHO WEED TRIMMER, 17720244331, STARTER PAWL	N/A	1
295-3401	ECHO WEED TRIMMER, 17728042030, RECOIL SPRING	N/A	4
295-3404	ECHO WEED TRIMMER, 17800156730, CABLE-THROTTLE	N/A	3
295-3405	ECHO WEED TRIMMER, 17800352130, BRACKET THROTTLE	N/A	14
295-3407	ECHO WEED TRIMMER, 17801052130, THROTTLE CONTROL	N/A	28
295-3408	ECHO WEED TRIMMER, 17801252630, THROTTLE LOCK OUT	N/A	3
295-3409	ECHO WEED TRIMMER, 17801352630, THROTTLE LOCK OUT	N/A	6
295-3410	ECHO WEED TRIMMER, 17804306930, RETURN SPRING	N/A	7
295-3411	ECHO WEED TRIMMER, 17804342230, RETURN SPRING	N/A	17
295-3413	ECHO WEED TRIMMER, 17809052632, LOCK OUT LEVER	N/A	6
295-3416	ECHO WEED TRIMMER, 17851051730, CHOKE ROD	N/A	11
295-3417	ECHO WEED TRIMMER, 17881005230, RUBBER BUSHING	N/A	6

# Quote Request

## Disposition of 7 Vehicles & Lots A – F of Miscellaneous Items

295-3419	ECHO WEED TRIMMER, 35120106930, LOOP)	N/A	3
295-3433	ECHO WEED TRIMMER, 61091043130, CUSHION SHAFT	N/A	9
295-3434	ECHO WEED TRIMMER, 61091055230, CUSHION SHAFT	N/A	8
295-3435	ECHO WEED TRIMMER, 6141007530, GEAR HOUSING	N/A	5
295-3436	ECHO WEED TRIMMER, 69900007531, SHIELD	N/A	8
295-3437	ECHO WEED TRIMMER, 69901027231, SHIELD	N/A	11
295-3439	ECHO WEED TRIMMER, 69901644330, LINE CUTTER	N/A	10
295-3445	ECHO WEED TRIMMER, 90052800005, WING NUT	N/A	8
295-3450	ECHO WEED TRIMMER, A4090000150, FLYWHEEL	N/A	1
295-3458	ECHO WEED TRIMMER, V100000080, GASKET CYLINDER	N/A	10
295-3471	ELEPHANT VAC PARTS, 492341, ARMATATURE-MAGNETO	N/A	3
295-3482	ELEPHANT VAC PARTS, 691694, GASKET, INTAKE	N/A	1
295-3483	ELEPHANT VAC PARTS, 692070, GOVERNOR SPRING	N/A	4
295-3485	ELEPHANT VAC PARTS, 7822023, FUSE HOLDER	N/A	2
295-3493	ELEPHANT VAC PARTS, 85768, MIRROR HEAD	N/A	3
295-3494	ELEPHANT VAC PARTS, 9074, FILTER SCREEN	N/A	1
295-3503	ELEPHANT VAC PARTS, 9566B, SPINDLE, RH	N/A	5
295-3510	ELEPHANT VAC PARTS, 9680, VAC. CONTROL VALVE	N/A	1
295-3511	ELEPHANT VAC PARTS, 9684, PICK UP STRAINER	N/A	8
295-3512	ELEPHANT VAC PARTS, 9685, TANK CAP, HYDRAULIC	N/A	10
295-3527	ELEPHANT VAC PARTS, 9724, DRIVE CONTROL CABLE	N/A	3
295-3530	ELEPHANT VAC PARTS, 9731, DRIVE DAMPER	N/A	2
295-3531	ELEPHANT VAC PARTS, 9732, TIE ROD END	N/A	2
295-3535	ELEPHANT VAC PARTS, 9741, FUEL SHUT OFF VALVE	N/A	1
295-3538	ELEPHANT VAC PARTS, 9748, SPRING MOUNT PLATE	N/A	3
295-3539	ELEPHANT VAC PARTS, 9762, MICRO SWITCH	N/A	4
295-3541	ELEPHANT VAC PARTS, 9767, SOLENOID	N/A	2
295-3542	ELEPHANT VAC PARTS, 9768, POSITIBE BATTERYCABLE	N/A	4

# Quote Request

## Disposition of 7 Vehicles & Lots A – F of Miscellaneous Items

295-3543	ELEPHANT VAC PARTS, 9769, NEGATIVE BATTERY CABLE	N/A	2
295-3548	ELEPHANT VAC PARTS, 9816, SPRING U-BOLT	N/A	7
295-3549	ELEPHANT VAC PARTS, 9818, KEY	N/A	5
295-3554	ELEPHANT VAC PARTS, L44643, BEARING	N/A	10
295-3556	ELEPHANT VAC PARTS, TC-162, VAC HOSE BOOT	N/A	30
295-3561	ELEPHANT VAC PARTS, TC-30, YOKE	N/A	4
295-3563	ELEPHANT VAC PARTS, TC-31, YOKE	N/A	1
295-3567	ELEPHANT VAC PARTS, TC-43, BALL JOINT	N/A	3
295-3571	ELEPHANT VAC PARTS, TC-87, VAC. HOSE CLAMP	N/A	23
295-3581	FLASHER, 552 FLASHER)	N/A	2
295-3590	FORD 1100, BMB 1082, SEAL	N/A	6
295-3597	FORD 1100, N801503-52, PUSH NUT	N/A	6
295-3600	FORD 1100, SBA 031310820, PIN	N/A	3
295-3603	FORD 1100, SBA 050103120, SEAL	N/A	1
295-3604	FORD 1100, SBA 050202235, SEAL)	N/A	2
295-3609	FORD 1100, SBA 145996050, GASKET	N/A	1
295-3615	FORD 1100, SBA 199280470, WASHER	N/A	2
295-3616	FORD 1100, SBA 19928048, WASHER	N/A	2
295-3617	FORD 1100, SBA 199280490, WASHER	N/A	3
295-3619	FORD 1100, SBA 314177021, MUFFLER COVER	N/A	1
295-3636	FORD 1100, SBA 385609710, WIRE	N/A	5
295-3637	FORD 1100, SBA 385650010, BATTERY CABLE, GROUND	N/A	1
295-3640	FORD 1100, SBA 389310200, HOLDER BATTERY	N/A	3
295-3641	FORD 1100, SBA 389320070, BATTERY HOLD DOWN ROD K	N/A	4
295-3645	FORD 1100, SBA 398210290, SPRING	N/A	11
295-3647	FORD 1100, SBA 498460010, CAP	N/A	1
295-3651	FORD 1100, 322140310, YOKE COVER	N/A	2
295-3656	FORD 1100, BMB 2367, BOLT ASSEMBLY)	N/A	3
295-3659	FORD 1100, SBA 040116001, PILOT BEARING	N/A	1
295-3665	FORD 1100, SBA 320040460, PRESSURE PLATE	N/A	2
295-3666	FORD 1100, SBA 320400071, DISC ASSEMBLY	N/A	2
295-3706	GRAVELY TRACTOR WALK BEHIND, 009240 V BELT	N/A	1

# Quote Request

## Disposition of 7 Vehicles & Lots A – F of Miscellaneous Items

295-3707	GRAVELY TRACTOR WALK BEHIND, 018318 GASKET SHIPPER	N/A	19
295-3711	GRAVELY TRACTOR WALK BEHIND, 018448 SPACER	N/A	2
295-3715	GRAVELY TRACTOR WALK BEHIND, 021541 WASHER	N/A	18
295-3720	GRAVELY TRACTOR WALK BEHIND, 03551000 SELONOID	N/A	5
295-3721	GRAVELY TRACTOR WALK BEHIND, 038274 PLOW LATCH PIN	N/A	1
295-3724	GRAVELY TRACTOR WALK BEHIND, 044139 HANDLE GRIP	N/A	4
295-3728	GRAVELY TRACTOR WALK BEHIND, 045422 DAWG	N/A	2
295-3729	GRAVELY TRACTOR WALK BEHIND, 046822 LEVER	N/A	10
295-3731	GRAVELY TRACTOR WALK BEHIND, 057026 SNAP RING	N/A	9
295-3734	GRAVELY TRACTOR WALK BEHIND, 05960100 BOLT	N/A	27
295-3737	GRAVELY TRACTOR WALK BEHIND, 06430400 WASHER	N/A	5
295-3741	GRAVELY TRACTOR WALK BEHIND, 06534700 JAM NUT	N/A	11
295-3743	GRAVELY TRACTOR WALK BEHIND, 06926200 CHOKE CONTRO	N/A	2
295-3747	GRAVELY TRACTOR WALK BEHIND, 07226600 FELT BELT	N/A	2
295-3758	GRAVELY TRACTOR WALK BEHIND, 08530200 SPRING	N/A	4
295-3760	GRAVELY TRACTOR WALK BEHIND, 08531300 QUICK HITCH	N/A	16
295-3764	GRAVELY TRACTOR WALK BEHIND, 08553300 BRAKE DISC	N/A	14
295-3765	GRAVELY TRACTOR WALK BEHIND, 08559500 DRIVE PLATE	N/A	2
295-3767	GRAVELY TRACTOR WALK BEHIND, 08570100 GASKET	N/A	10
295-3768	GRAVELY TRACTOR WALK BEHIND, 085718 SWITCH OPEN	N/A	2
295-3772	GRAVELY TRACTOR WALK BEHIND, 08584900 GASKET	N/A	3
295-3773	GRAVELY TRACTOR WALK BEHIND, 08585100 BUSHING	N/A	8
295-3777	GRAVELY TRACTOR WALK BEHIND, 08798300 BLADE CRADLE	N/A	6
295-3778	GRAVELY TRACTOR WALK BEHIND, 08800400 CLEVIS ADJ	N/A	2
295-3780	GRAVELY TRACTOR WALK BEHIND, 08861600 BLADE	N/A	5
295-3785	GRAVELY TRACTOR WALK BEHIND, 09023500 SPACER	N/A	3
295-3794	GRAVELY TRACTOR WALK BEHIND, 2486580100 OIL FILTER	N/A	4
295-3795	GRAVELY TRACTOR WALK BEHIND, 2806220100 FUEL PUMP	N/A	3
295-3797	GRAVELY TRACTOR WALK BEHIND, 5850130 CLUTCH KIT PT	N/A	6

# Quote Request

## Disposition of 7 Vehicles & Lots A – F of Miscellaneous Items

295-3800	GRAVELY TRACTOR WALK BEHIND, 691065 ALTERNATORS	N/A	2
295-3801	GRAVELY TRACTOR WALK BEHIND, 691188 REGULATORS	N/A	4
295-3805	GRAVELY TRACTOR WALK BEHIND, L44643 BEARING ROLLER	N/A	1
295-3807	GRAVELY TRACTOR WALK BEHIND, RA100RRB BEARING/COLL	N/A	3
295-4334	LAWNBOY MOWER, 100-9514, MUFFLER & GUARD	N/A	4
295-4335	LAWNBOY MOWER, 145476, FUEL TANK	N/A	1
295-4336	LAWNBOY MOWER, 153254, ROPE GUIDE	N/A	3
295-4337	LAWNBOY MOWER, 153444, KNOB & SPRING ASSEMBLY	N/A	5
295-4339	LAWNBOY MOWER, 252-80, THRUST WASHER	N/A	11
295-4344	LAWNBOY MOWER, 44-3172, PRIMER HOSE	N/A	6
295-4345	LAWNBOY MOWER, 603164, BLADE NUT	N/A	3
295-4347	LAWNBOY MOWER, 607199, FLY WHEEL KEY	N/A	3
295-4348	LAWNBOY MOWER, 607544, TEE NUT HANDLE)	N/A	8
295-4350	LAWNBOY MOWER, 608833, BRACKET WHEEL ADJUSTER	N/A	5
295-4352	LAWNBOY MOWER, 609493, AIR FILTER	N/A	4
295-4354	LAWNBOY MOWER, 609786, CRANKSHAFT SUPPORT PLATE	N/A	17
295-4355	LAWNBOY MOWER, 609830, FUEL TANK CLIP	N/A	15
295-4356	LAWNBOY MOWER, 609976, PULLEY	N/A	7
295-4357	LAWNBOY MOWER, 610165, THROTTLE LEVER RETAINER	N/A	1
295-4358	LAWNBOY MOWER, 610345, SET SCREW)	N/A	18
295-4359	LAWNBOY MOWER, 610383, FILTER COVER RETAINER	N/A	6
295-4360	LAWNBOY MOWER, 611192, BRAKE BRACKET	N/A	2
295-4361	LAWNBOY MOWER, 6112228, MUFFLER BOLT)	N/A	12
295-4362	LAWNBOY MOWER, 611377, AIR FILTE COVER	N/A	14
295-4363	LAWNBOY MOWER, 611396, OIL SEAL)	N/A	9
295-4366	LAWNBOY MOWER, 611802, MUFFLER PLATE	N/A	4
295-4368	LAWNBOY MOWER, 612429, STARTER HUB)	N/A	9
295-4370	LAWNBOY MOWER, 612502, CONTROL LEVER	N/A	7
295-4380	LAWNBOY MOWER, 613072, CD MOUNT BRACKET)	N/A	8
295-4381	LAWNBOY MOWER, 613142, GOVERNOR SPRING	N/A	11
295-4385	LAWNBOY MOWER, 66-7460, PRIMER BULB	N/A	26
295-4386	LAWNBOY MOWER, 677525, COLLAR & PLATE)	N/A	6

# Quote Request

## Disposition of 7 Vehicles & Lots A – F of Miscellaneous Items

295-4389	LAWNBOY MOWER, 681737, RING SSET)	N/A	3
295-4390	LAWNBOY MOWER, 681830, BEARING	N/A	6
295-4391	LAWNBOY MOWER, 681831, BEARING 1)	N/A	4
295-4393	LAWNBOY MOWER, 682755, FUEL CAP	N/A	6
295-4396	LAWNBOY MOWER, 683-464, WHEEL/TIRE ASSEMBLY	N/A	5
295-4397	LAWNBOY MOWER, 683580, FLY WHEEL	N/A	2
295-4403	LAWNBOY MOWER, 683847, HANDLE SWITCH	N/A	3
295-4409	LAWNBOY MOWER, 92-1043, BELT	N/A	5
295-4410	LAWNBOY MOWER, 92-1054, MUFFLER PLATE	N/A	5
295-4411	LAWNBOY MOWER, 921152, CD UNIT (IGNITION MODULE)	N/A	7
295-4413	LAWNBOY MOWER, 92-4925, PISTON W/CONNECTING ROD	N/A	4
295-4414	LAWNBOY MOWER, 92-4944, GOVERNOR SPRING	N/A	17
295-4416	LAWNBOY MOWER, 92-5412, ROPE GUIDE	N/A	11
295-4417	LAWNBOY MOWER, 92-6376, AIR VANE & SHAFT	N/A	5
295-4418	LAWNBOY MOWER, 92-6518, TRACTION CABLE	N/A	4
295-4419	LAWNBOY MOWER, 92-7736, TRAILING SHIELD	N/A	9
295-4420	LAWNBOY MOWER, 92-7738, FLY WHEEL BRAKE CABLE	N/A	4
295-4421	LAWNBOY MOWER, 93-1225, THROTTLE LEVER	N/A	26
295-4423	LAWNBOY MOWER, 93-1233, EXHAUST GASKET	N/A	25
295-4426	LAWNBOY MOWER, 93-3778, THROTTLE CABLE	N/A	2
295-4428	LAWNBOY MOWER, 93-4320, DUST COVER	N/A	16
295-4429	LAWNBOY MOWER, 93-7368, TRAILING SHIELD	N/A	2
295-4431	LAWNBOY MOWER, 94-5713, CRANK SHAFT	N/A	2
295-4433	LAWNBOY MOWER, 94-5764, OIL SEAL	N/A	15
295-4434	LAWNBOY MOWER, 94-5778, HEAD GASKET	N/A	14
295-4435	LAWNBOY MOWER, 95-1714, WHEEL & GEAR ASSEMBLY	N/A	8
295-4436	LAWNBOY MOWER, 95-1778, EXHAUST GASKET	N/A	45
295-4440	LAWNBOY MOWER, 95-5574, AIR FILTER	N/A	3
295-4441	LAWNBOY MOWER, 95-7052, CHUTE PLATE	N/A	6
295-4445	LAWNBOY MOWER, 98-1383, MUFFLER PLATE	N/A	10
295-4446	LAWNBOY MOWER, 98-1392, EXHAUST GASKET	N/A	40
295-4447	LAWNBOY MOWER, 984467, SHROUD ASSEMBLY	N/A	3
295-4448	LAWNBOY MOWER, 98-4497, FUEL TANK	N/A	1

# Quote Request

## Disposition of 7 Vehicles & Lots A – F of Miscellaneous Items

295-4449	LAWNBOY MOWER, 987011, GOVERNOR SPRING	N/A	4
295-4451	LAWNBOY MOWER, 98-8344, FUEL CAP	N/A	10
295-4953	POULAN PARTS CHAIN SAW, 2121378, FUEL & OIL CAP	N/A	3
295-4957	POULAN PARTS CHAIN SAW, 43600122060, OIL CAP	N/A	2
295-4958	POULAN PARTS CHAIN SAW, 506096201, BASE GASKET	N/A	1
295-4959	POULAN PARTS CHAIN SAW, 530001516, INNER SNAP RIN	N/A	4
295-4960	POULAN PARTS CHAIN SAW, 530010645, FUEL CAP-	N/A	3
295-4961	POULAN PARTS CHAIN SAW, 530010655, AIR FILTER	N/A	1
295-4962	POULAN PARTS CHAIN SAW, 530010845, OIL CAP	N/A	1
295-4963	POULAN PARTS CHAIN SAW, 530010846, FUEL CAP	N/A	2
295-4965	POULAN PARTS CHAIN SAW, 530010864, PISTON KIT	N/A	2
295-4966	POULAN PARTS CHAIN SAW, 530010992, AIR FILTER	N/A	1
295-4970	POULAN PARTS CHAIN SAW, 530012244, CYLINDER	N/A	1
295-4971	POULAN PARTS CHAIN SAW, 530014199, FUEL FILTER2	N/A	2
295-4972	POULAN PARTS CHAIN SAW, 530014943, SHORT BLOCK	N/A	2
295-4976	POULAN PARTS CHAIN SAW, 530015891, STARTER SPRING	N/A	3
295-4981	POULAN PARTS CHAIN SAW, 530019172, AIR FILTER GAS	N/A	5
295-4984	POULAN PARTS CHAIN SAW, 530024772, TRHOTTLE SPRIN	N/A	4
295-4985	POULAN PARTS CHAIN SAW, 530027073, ROD LINKAGE	N/A	4
295-4986	POULAN PARTS CHAIN SAW, 530027075, CHOKE KNOB	N/A	3
295-4988	POULAN PARTS CHAIN SAW, 530027143, CRANKSHAFT	N/A	2
295-4989	POULAN PARTS CHAIN SAW, 530027170, STARTER PULLEY	N/A	1
295-4990	POULAN PARTS CHAIN SAW, 530027187, INSULATOR LIMI	N/A	2
295-4991	POULAN PARTS CHAIN SAW, 530027392, INSULATOR LOWE	N/A	2
295-4992	POULAN PARTS CHAIN SAW, 530027393, MOUNT LEFT SID	N/A	4
295-4993	POULAN PARTS CHAIN SAW, 530027394, CYLINDER MOUNT	N/A	2
295-5001	POULAN PARTS CHAIN SAW, 530069850, CARB REBUILD K	N/A	1
295-5090	SEWER MACHINE, SV-51-3, CONTAINER FRONT	N/A	2
295-5093	SEWER MACHINE, T6-610, FOOT SWITCH FOR/REV	N/A	2
295-5096	SEWER MACHINES, 2610908291, W-WIRE POWER CORD	N/A	21
295-5111	SEWER MACHINES, HE-25-A, JACOBS CHUCK	N/A	7

# Quote Request

## Disposition of 7 Vehicles & Lots A – F of Miscellaneous Items

295-5129	SEWER MACHINES, SV-25, CABLE GRIP	N/A	1
295-5131	SEWER MACHINES, SV-3, GRIP SHIELD	N/A	1
295-5133	SEWER MACHINES, SV-4, GEAR CASE BODY	N/A	1
295-5134	SEWER MACHINES, SV-5, GEAR CASE CAP	N/A	1
295-5138	SEWER MACHINES, SV-6, RING GEAR	N/A	1
295-5140	SEWER MACHINES, SV-M-5, MOTOR	N/A	1
295-5268	TENANT VAC PARTS, 361201, AIR FILTER ELEMENT -	N/A	4
295-5270	TENANT VAC PARTS, 367079, CAP BREATHER)	N/A	1
295-5273	TENANT VAC PARTS, 367322, PLASTIC RING)	N/A	2
295-5277	TENANT VAC PARTS, 367746, DRUM LATCH	N/A	6
295-5281	TENANT VAC PARTS, 48267, FUEL TANK CAP)	N/A	1
295-5286	TENANT VAC PARTS, 84030, TAILLIGHT	N/A	4
295-5614	YEATS DOLLY PARTS, MODEL M-7, 12 SUPPORT ROD	N/A	4
295-5625	YEATS DOLLY PARTS, MODEL M-7, 22, A/B BEARING AND	N/A	8
295-5626	YEATS DOLLY PARTS, MODEL M-7, 22, WHEEL COMPLETE	N/A	2
295-5627	YEATS DOLLY PARTS, MODEL M-7, 23 NOSE PLATE LIP	N/A	2
295-5628	YEATS DOLLY PARTS, MODEL M-7, 24A, FELT PAD SET I	N/A	1
295-5632	YEATS DOLLY PARTS, MODEL M-7, 27, REPLACEMENT TOP	N/A	2
295-5634	YEATS DOLLY PARTS, MODEL M-7, 3A SPACER BOLT -	N/A	1
295-5637	YEATS DOLLY PARTS, MODEL M-7, 7, RATCHET HANDLE	N/A	6
295-5639	YEATS DOLLY PARTS, MODEL M-7, 8, MIDDLE CROSS MEMB	N/A	3
295-5686	VACUUM SWEEPER, BAG ASSEMBLY, 54582-1 - 3ZJL4	N/A	1
295-5698	VACUUM SWEEPER, BELT, 38528-033-G3	N/A	9
295-5700	VACUUM SWEEPER, BOTTOM PLATE, 1499912	N/A	3
295-5702	VACUUM SWEEPER, BOTTOM PLATE, 25922-1)	N/A	3
295-5707	VACUUM SWEEPER, CORD RETAINER, LOWER	N/A	9
295-5708	VACUUM SWEEPER, CORD RETAINER, TOP, 53574-1	N/A	9
295-5711	VACUUM SWEEPER, HANDLE SOCKET SP, 1430958	N/A	4
295-5714	VACUUM SWEEPER, MOTOR FAN, 12988)	N/A	2
295-5721	VACUUM SWEEPER, SCREW & NUT ASSEMBLY, 53198-1	N/A	4
295-5727	VACUUM SWEEPER, SPRING CORD, 53077	N/A	3
295-5731	VACUUM SWEEPER, SWITCH-FOOT, ON/OFF, 4495065 -	N/A	3

# Quote Request

## Disposition of 7 Vehicles & Lots A – F of Miscellaneous Items

295-5777	TANAKA HEDGE TRIMMER PARTS, BOLT, 124-33202-206	N/A	5
295-5780	BLACK & DECKER CORDLESS DRILL PARTS, SCREW, #60525	N/A	15
295-5810	JOHN DEERE 855 PARTS, O-RINGS, T77857	N/A	9
295-5961	PARTS FOR EVAC VR FAN COOLING 6 BLADE (KU) 367262	N/A	3
295-5962	PARTS FOR EVAC VR BELT V 9 5MM 37,4L (KU) 368082	N/A	2
295-5964	PARTS FOR EVAC VR GASKET #10851	N/A	2
295-5965	PARTS FOR EVAC VR PUMP WATER #361400	N/A	2
295-5966	PARTS FOR EVAC CAP, RADIATOR 15 PSI #368132	N/A	1
295-5969	PARTS FOR EVAC VR GASKET PUMP WATER #361419	N/A	2
295-6063	TENNANT HALOGEN (H1) 2D9P, 12 VDC 55 WATT	N/A	1
295-6126	LAWNBOY MOWERS PART#93-0296 DECAL-RECOIL	N/A	1
295-6131	ECHO TRIMMER PARTS #89012106360 LABEL-CHOKE	N/A	2
295-6175	TENNANT PARTS #87536AM SWITCH IGNITION	N/A	2
295-6176	TENNANT PARTS #87866 KEY IGNITION (SET OF 2)	N/A	5
295-6245	VENT PLUG #530-027339	N/A	4
295-6246	VENT FITTING #530-024475	N/A	3
295-6249	FLASHER HD 12VDC 25A TENNANT #31922	N/A	5
295-6251	ECHO WEED TRIMMER CYLINDER #A130000430	N/A	2
295-6399	ECHO WEED TRIMMER PART #PO21004270 GASKET KIT MUFF - LER/CARB.	N/A	2
295-6474	ECHO WEED TRIMMER PUMP PRIMER #12538146730	N/A	12

# Quote Request

Disposition of 7 Vehicles & Lots A – F  
of Miscellaneous Items

## Lot E – Equipment Repair



# Quote Request

Disposition of 7 Vehicles & Lots A – F  
of Miscellaneous Items

**Lot E – Equipment Repair**



# Quote Request

Disposition of 7 Vehicles & Lots A – F  
of Miscellaneous Items  
**Lot E – Equipment Repair**



# Quote Request

Disposition of 7 Vehicles & Lots A – F  
of Miscellaneous Items  
**Lot E – Equipment Repair**



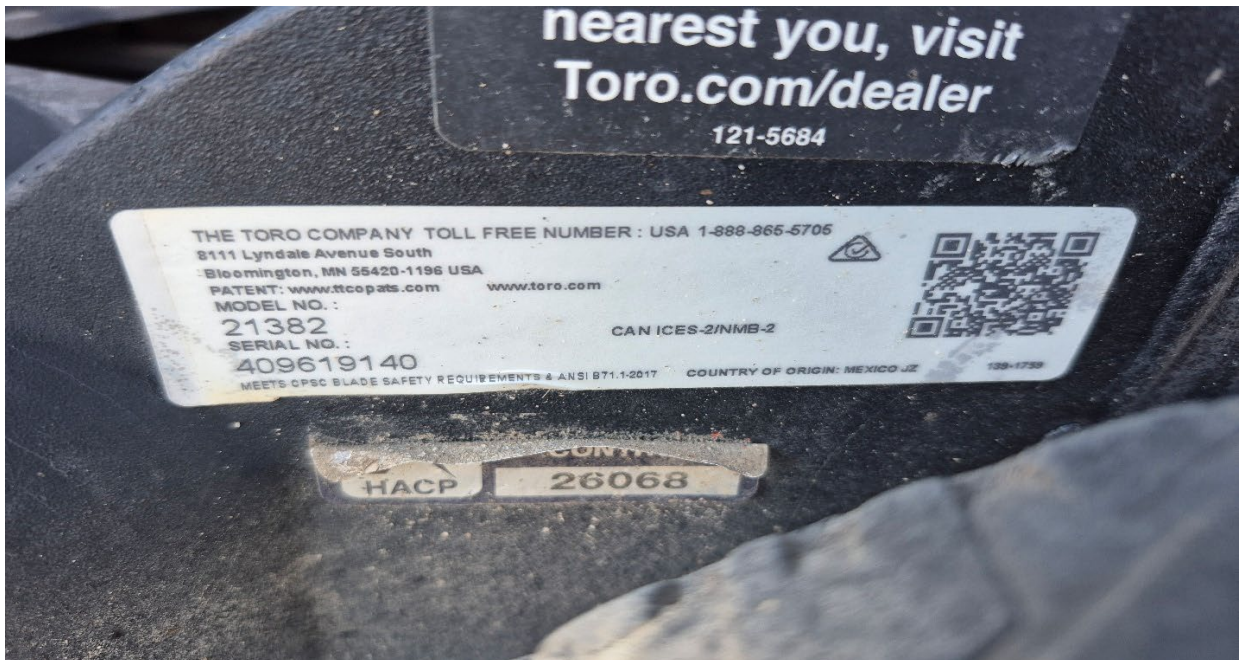
# Quote Request

Disposition of 7 Vehicles & Lots A – F  
of Miscellaneous Items  
**Lot E – Equipment Repair**



# Quote Request

Disposition of 7 Vehicles & Lots A – F  
of Miscellaneous Items  
**Lot E – Equipment Repair**



# Quote Request

Disposition of 7 Vehicles & Lots A – F  
of Miscellaneous Items

## Lot E –Equipment Repair



# Quote Request

Disposition of 7 Vehicles & Lots A – F  
of Miscellaneous Items

**Lot E – Equipment Repair**



# Quote Request

Disposition of 7 Vehicles & Lots A – F  
of Miscellaneous Items

## Lot E – Equipment Repair



# Quote Request

Disposition of 7 Vehicles & Lots A – F  
of Miscellaneous Items

**Lot E – Equipment Repair**



# Quote Request

Disposition of 7 Vehicles & Lots A – F  
of Miscellaneous Items

**Lot E – Equipment Repair**



# Quote Request

Disposition of 7 Vehicles & Lots A – F  
of Miscellaneous Items  
**Lot E – Equipment Repair**



# Quote Request

Disposition of 7 Vehicles & Lots A – F  
of Miscellaneous Items

## Lot E – Equipment Repair



# Quote Request

Disposition of 7 Vehicles & Lots A – F  
of Miscellaneous Items

**Lot E – Equipment Repair**



# Quote Request

Disposition of 7 Vehicles & Lots A – F  
of Miscellaneous Items

## Lot E – Equipment Repair



# Quote Request

Disposition of 7 Vehicles & Lots A – F  
of Miscellaneous Items

**Lot F- Obsolete Inventory**

**15 Pages attached**