

**Attachment A - Specification Section 08 06 71 Door Hardware Schedule**

Allies & Ross Management and Development Corporation  
IFB#2023-40-G-E-P-M  
New Construction of Northview Midrise

## SECTION 080671 – DOOR HARDWARE SCHEDULE

### PART 1 - GENERAL

#### 1.1 RELATED DOCUMENTS

- A. Drawings and general provisions of the Contract, including General and Supplementary Conditions and Division 1 Specification Sections, apply to this Section.

#### 1.2 SUMMARY

- A. This Section references specification sections relating to commercial door hardware for the following:
  - 1. Swinging doors.
  - 2. Sliding Doors.
  - 3. Other doors to the extent indicated.
- B. Commercial door hardware includes, but is not necessarily limited to, the following:
  - 1. Mechanical door hardware.
  - 2. Electromechanical and access control door hardware.
  - 3. Electromechanical and access control door hardware power supplies, back-ups and surge protection.
  - 4. Automatic operators.
  - 5. Cylinders specified for doors in other sections.
- C. Related Sections:
  - 1. Division 08 Section “Door Hardware”.
  - 2. Division 28 Section “Multi-Family Access Control”.
- D. Codes and References: Comply with the version year adopted by the Authority Having Jurisdiction.
  - 1. ANSI A117.1 - Accessible and Usable Buildings and Facilities.
  - 2. ICC/IBC - International Building Code.
  - 3. NFPA 70 - National Electrical Code.
  - 4. NFPA 80 - Fire Doors and Windows.
  - 5. NFPA 101 - Life Safety Code.
  - 6. NFPA 105 - Installation of Smoke Door Assemblies.
  - 7. State Building Codes, Local Amendments.
- E. Standards: Reference Related Sections for requirements regarding compliance with applicable industry standards.

### 1.3 SUBMITTALS

- A. Product Data: Manufacturer's product data sheets including installation details, material descriptions, dimensions of individual components and profiles, operational descriptions and finishes.
- B. Door Hardware Schedule: Prepared by or under the supervision of supplier, detailing fabrication and assembly of door hardware, as well as procedures and diagrams. Coordinate the final Door Hardware Schedule with doors, frames, and related work to ensure proper size, thickness, hand, function, and finish of door hardware.
  - 1. Format: Comply with scheduling sequence and vertical format in DHI's "Sequence and Format for the Hardware Schedule."
  - 2. Organization: Organize the Door Hardware Schedule into door hardware sets indicating complete designations of every item required for each door or opening. Organize door hardware sets in same order as in the Door Hardware Sets at the end of Part 3. Submittals that do not follow the same format and order as the Door Hardware Sets will be rejected and subject to resubmission.
  - 3. Content: Include the following information:
    - a. Type, style, function, size, label, hand, and finish of each door hardware item.
    - b. Manufacturer of each item.
    - c. Fastenings and other pertinent information.
    - d. Location of door hardware set, cross-referenced to Drawings, both on floor plans and in door and frame schedule.
    - e. Explanation of abbreviations, symbols, and codes contained in schedule.
    - f. Mounting locations for door hardware.
    - g. Door and frame sizes and materials.
  - 4. Submittal Sequence: Submit the final Door Hardware Schedule at earliest possible date, particularly where approval of the Door Hardware Schedule must precede fabrication of other work that is critical in the Project construction schedule. Include Product Data, Samples, Shop Drawings of other work affected by door hardware, and other information essential to the coordinated review of the Door Hardware Schedule.
- C. Keying Schedule: Prepared under the supervision of the Owner, separate schedule detailing final keying instructions for locksets and cylinders in writing. Include keying system explanation, door numbers, key set symbols, hardware set numbers and special instructions. Owner to approve submitted keying schedule prior to the ordering of permanent cylinders.
- D. Product Test Reports: Indicating compliance with cycle testing requirements, based on evaluation of comprehensive tests performed by manufacturer and witnessed by a qualified independent testing agency.
- E. Operating and Maintenance Manuals: Provide manufacturers operating and maintenance manuals for each item comprising the complete door hardware installation in quantity as required in Division 01, Closeout Submittals. The manual to include the name, address, and contact information of the manufacturers providing the hardware and their nearest service

representatives. The final copies delivered after completion of the installation test to include "as built" modifications made during installation, checkout, and acceptance.

- F. Warranties and Maintenance: Special warranties and maintenance agreements specified in the Related Sections.

#### 1.4 DELIVERY, STORAGE, AND HANDLING

- A. Inventory door hardware on receipt and provide secure lock-up and shelving for door hardware delivered to Project site. Do not store electronic access control hardware, software or accessories at Project site without prior authorization.
- B. Tag each item or package separately with identification related to the final Door Hardware Schedule, and include basic installation instructions with each item or package.
- C. Deliver, as applicable, permanent keys, cylinders, cores, access control credentials, software and related accessories directly to Owner via registered mail or overnight package service. Instructions for delivery to the Owner shall be established at the "Keying Conference".

#### 1.5 WARRANTY

- A. General Warranty: Reference Division 01, General Requirements. Special warranties specified in this Article shall not deprive Owner of other rights Owner may have under other provisions of the Contract Documents and shall be in addition to, and run concurrent with, other warranties made by Contractor under requirements of the Contract Documents.

#### 1.6 MAINTENANCE SERVICE

- A. Maintenance Tools and Instructions: Furnish a complete set of specialized tools and maintenance instructions as needed for Owner's continued adjustment, maintenance, and removal and replacement of door hardware.

### PART 2 - PRODUCTS

#### 2.1 SCHEDULED DOOR HARDWARE

- A. Refer to "PART 3 – EXECUTION" for required specification sections.
  - 1. Manufacturers listed are the Basis-of-Design, other manufacturers must be approved equal by Architect/Owner.

### PART 3 - EXECUTION

#### 3.1 DOOR HARDWARE SETS

- A. The door hardware sets represent the design intent and direction of the owner and architect. They are a guideline only and should not be considered a detailed hardware schedule.

Discrepancies, conflicting hardware and missing items should be brought to the attention of the architect with corrections made prior to the bidding process. Omitted items not included in a hardware set should be scheduled with the appropriate additional hardware required for proper application and functionality.

1. Quantities listed are for each pair of doors, or for each single door.
  2. The supplier is responsible for handing and sizing all products.
  3. Where multiple options for a piece of hardware are given in a single line item, the supplier shall provide the appropriate application for the opening.
  4. At existing openings with new hardware the supplier shall field inspect existing conditions prior to the submittal stage to verify the specified hardware will work as required. Provide alternate solutions and proposals as needed.
- B. Products listed in the hardware sets shall be supplied by and in accordance with the requirements described in the specification section as noted for each item.
1. Section 08 71 00 – Door Hardware.
  2. Section 28 15 10 – Multi-Family Access Control.
- C. Manufacturer’s Abbreviations:
1. MK - McKinney
  2. PE - Pemko
  3. SU - Securitron
  4. RO - Rockwood
  5. YA - Yale
  6. HS - HES
  7. RF - Rixson
  8. NO - Norton
  9. TA - Traka
  10. MC - Medeco

**Hardware Sets**

**Set: 1.0**

Doors: 101a A

2	Continuous Hinge	CFMSLF-HD1	PE 087100
2	Electric Power Transfer	EL-CEPT	SU 087100 ⚡
1	Concealed Vert Rod Exit, Exit Only	7160 B MELR EO	630 YA 087100 ⚡

1	Concealed Vert Rod Exit, Nightlatch	7160 B MELR 121NL	630	YA 087100	⚡
1	Rim Cylinder	1109	626	YA 087100	
2	Pull	RM201	US32D	RO 087100	
1	Surface Closer (UNI Stop arm)	UNI4400	689	YA 087100	
1	Automatic Opener	6300 Series	689	NO 087113	⚡
1	Threshold	252x3AFG		PE 087100	
1	Gasketing	S88D (head & jambs)		PE 087100	
2	Sweep	315CN		PE 087100	
1	Astragal	S772BL LAR		PE 087100	
1	Updater/Controller	NTX642-KIT (supplied by Division 28)		YA 281500	⚡
2	ElectroLynx Harness	QC-C x LENGTH REQ'D		MK 087100	⚡
2	ElectroLynx Harness	QC-C1500P		MK 087100	⚡
2	Door Switch	501		NO 087100	⚡
1	Power Supply	AQL4-R8E1		SU 087100	⚡
2	Door Contact	BY SECURITY CONTRATOR			
1	Wiring Diagrams	ELEVATION & POINT-TO- POINT			

Notes: Operational Description: Doors are normally closed and locked and outside door switch is disabled. Presenting a valid card to the card reader will momentarily retract latch of exit device at RHR leaf and enable outside door switch, allowing manual entry by pulling door open or assisted entry by pressing outside door switch to activate auto operator at RHR leaf. Entry also by key in cylinder at RHR leaf. Assisted egress at all times by pressing inside door switch to retract latches of exit device and activate auto operator at RHR leaf. Manual egress at all times by pressing rail of either exit device and exiting. Pressing rail of either device will shunt door contacts for authorized egress. Door contacts monitor the position of the doors and report this status to the security system.

**Set: 2.0**

Doors: 100 A

1	Continuous Hinge	CFMSLF-HD1 x PT		PE 087100	
1	Electric Power Transfer	EL-CEPT		SU 087100	⚡
1	Rim Exit Device, Nightlatch	7100 B MELR 121NL	630	YA 087100	⚡
1	Rim Cylinder	1109	626	YA 087100	
1	Pull	RM201	US32D	RO 087100	
1	Surface Closer (UNI Stop arm)	UNI4400	689	YA 087100	

1	Threshold	252x3AFG	PE 087100
1	Gasketing	S88D (head & jambs)	PE 087100
1	Sweep	345CV	PE 087100
1	Updater/Controller	NTX642-KIT (supplied by Division 28)	YA 281500 ⚡
1	ElectroLynx Harness	QC-C x LENGTH REQ'D	MK 087100 ⚡
1	ElectroLynx Harness	QC-C1500P	MK 087100 ⚡
1	Power Supply	AQL4-R8E1	SU 087100 ⚡
1	Door Contact	BY SECURITY CONTRATOR	
1	Wiring Diagrams	ELEVATION & POINT-TO- POINT	

Notes: Operational Description: Door is normally closed and locked. Presenting a valid card to the card reader will momentarily retract latch of exit device, allowing entry. Entry also by key in cylinder. Manual egress at all times by pressing rail of exit device and exiting. Pressing rail of exit device will shunt door contact for authorized egress. Door contact monitors the position of the door and reports this status to the security system.

**Set: 3.0**

Doors: 106a B

2	Continuous Hinge	CFM-HD1	PE 087100
2	Concealed Vert Rod Exit, Exit Only	6165ED EO	630 YA 087100
1	Storeroom Thumbturn Trim	503F	626 YA 087100
1	Mortise Cylinder	2153	626 YA 087100
1	Rim Cylinder	1109	626 YA 087100
2	Pull	RM201	US32D RO 087100
2	Surface Closer (UNI Stop arm)	UNI4400	689 YA 087100
1	Threshold	252x3AFG	PE 087100
1	Gasketing	S88D (head & jambs)	PE 087100
2	Sweep	315CN	PE 087100
1	Astragal	S772BL LAR	PE 087100

**Set: 4.0**

Doors: 102 A

1	Continuous Hinge	CFM-HD1	PE 087100
---	------------------	---------	-----------

1	Rim Exit Device, Nightlatch	6105ED 121NL	630	YA	087100
1	Mortise Cylinder	2153	626	YA	087100
1	Rim Cylinder	1109	626	YA	087100
1	Pull	RM201	US32D	RO	087100
1	Surface Closer (UNI Stop arm)	UNI4400	689	YA	087100
1	Kick Plate	K1050 - 10" x 1" LDW x 4BE x CSK	US32D-316	RO	087100
1	Kick Plate	K1050 - 10" x 2" LDW x 4BE x CSK	US32D	RO	087100
1	Threshold	252x3AFG		PE	087100
1	Gasketing	S88D (head & jambs)		PE	087100
1	Sweep	315CN		PE	087100

**Set: 5.0**

Doors: 402 B

1	Continuous Hinge	CFMSLF-HD1 x PT		PE	087100
1	Electric Power Transfer	EL-CEPT		SU	087100 ⚡
1	Electrified Rim Exit, Fail Secure	7100 MO691F SPAR 05454	630	YA	087100 ⚡
1	Rim Cylinder	1109	626	YA	087100
1	Pull	RM201	US32D	RO	087100
1	Conc Overhead Stop	6-X36	630	RF	087100
1	Surface Closer (REG)	4400	689	YA	087100
1	Kick Plate	K1050 - 10" x 1" LDW x 4BE x CSK	US32D-316	RO	087100
1	Kick Plate	K1050 - 10" x 2" LDW x 4BE x CSK	US32D	RO	087100
1	Threshold	252x3AFG		PE	087100
1	Gasketing	S88D (head & jambs)		PE	087100
1	Sweep	315CN		PE	087100
1	Updater/Controller	NTX642-KIT (supplied by Division 28)		YA	281500 ⚡
1	ElectroLynx Harness	QC-C x LENGTH REQ'D		MK	087100 ⚡
1	ElectroLynx Harness	QC-C1500P		MK	087100 ⚡
1	Power Supply	AQL4-R8E1		SU	087100 ⚡
1	Wiring Diagrams	ELEVATION & POINT-TO-POINT			

Notes: CARD READER BY SECURITY VENDOR. PRESENTING AUTHORIZED CREDENTIAL TO



CARD READER WILL UNLOCK TRIM ALLOWING ACCESS. FREE EGRESS BY EXIT DEVICE.  
 EMERGENCY ACCESS BY KEY.

**Set: 6.0**

Doors: 111 B, 117 B, 118 A

1	Continuous Hinge	CFM-HD1		PE	087100
1	Rim Exit Device, Nightlatch	6105ED 121NL	630	YA	087100
1	Mortise Cylinder	2153	626	YA	087100
1	Rim Cylinder	1109	626	YA	087100
1	Pull	RM201	US32D	RO	087100
1	Surface Closer (UNI Stop arm)	UNI4400	689	YA	087100
1	Kick Plate	K1050 - 10" x 1" LDW x 4BE x CSK	US32D-316	RO	087100
1	Kick Plate	K1050 - 10" x 2" LDW x 4BE x CSK	US32D	RO	087100
1	Threshold	252x3AFG		PE	087100
1	Gasketing	S88D (head & jambs)		PE	087100
1	Sweep	315CN		PE	087100

**Set: 7.0**

Doors: 150 A, 150 B, 150 C, 150 D, 150 E

1	Continuous Hinge	CFM-HD1		PE	087100
1	Rim Exit Device, Classroom	6100-2ED MO626F (inside cylinder) LD	630	YA	087100
2	Rim Cylinder	1109	626	YA	087100
1	Surface Closer (UNI Stop arm)	UNI4400	689	YA	087100
1	Kick Plate	K1050 - 10" x 1" LDW x 4BE x CSK	US32D-316	RO	087100
1	Kick Plate	K1050 - 10" x 2" LDW x 4BE x CSK	US32D	RO	087100
1	Threshold	252x3AFG		PE	087100
1	Gasketing	S88D (head & jambs)		PE	087100
1	Sweep	315CN		PE	087100

**Set: 8.0**

Doors: GATE 1, GATE 2

1	Magnetic Lock	M62GBD	SU 087100	⚡
1	Updater/Controller	NTX642-KIT (supplied by Division 28)	YA 281500	⚡
1	Electromechanical Bar	WEMB-CL	SU 087100	⚡
1	Push Button	PB	SU 087100	⚡
1	Power Supply	AQL4-R8E1	SU 087100	⚡
1	Cover	WCC	SU 087100	⚡
1	Mounting Box	WBB	SU 087100	⚡

Notes: CARD READER BY SECURITY VENDOR. EXTERIOR: PRESENTING AUTHORIZED CREDENTIAL TO CARD READER WILL UNLOCK MAGNETIC LOCK ALLOWING ACCESS. INTERIOR: PUSHING TOUCH BAR WILL UNLOCK MAGNETIC LOCK ALLOWING EGRESS. PUSHING PUSH BUTTON WILL UNLOCK MAGNETIC LOCK ALLOWING EGRESS. ACTIVATION OF FIRE ALARM UNLOCKS MAGNETIC LOCKS.

**Set: 9.0**

Doors: 106 B

2	Continuous Hinge	CFM-HD1	PE 087100	
1	Flush Bolt (top self latching/ bottom automatic)	2845/ 2945	US26D RO 087100	
1	Dust Proof Strike	570	US26D RO 087100	
1	Storeroom or Closet Lock	MO 4705LN	626 YA 087100	
2	Surface Closer (UNI Stop arm)	UNI4400	689 YA 087100	
4	Kick Plate	K1050 - 10" x 1" LDW x 4BE x CSK	US32D- 316 RO 087100	
1	Threshold	252x3AFG	PE 087100	
1	Gasketing	S88D (head & jambs)	PE 087100	
2	Sweep	315CN	PE 087100	
1	Astragal	S772BL LAR	PE 087100	
1	Latch Protector	320CXL	US32D RO 087100	

**Set: 10.0**

Doors: 120 A

1	Continuous Hinge	CFM-HD1	PE 087100	
1	Storeroom or Closet Lock	MO 4705LN	626 YA 087100	
1	Surface Closer (UNI Stop	UNI4400	689 YA 087100	

	arm)			
1	Kick Plate	K1050 - 10" x 1" LDW x 4BE x CSK	US32D- 316	RO 087100
1	Kick Plate	K1050 - 10" x 2" LDW x 4BE x CSK	US32D	RO 087100
1	Threshold	252x3AFG		PE 087100
1	Gasketing	S88D (head & jambs)		PE 087100
1	Sweep	315CN		PE 087100
1	Latch Protector	320CXL	US32D	RO 087100

**Set: 11.0**

Doors: 415 B

1	Continuous Hinge	CFM-HD1		PE 087100
1	Storeroom or Closet Lock	MO 4705LN	626	YA 087100
1	Electric Strike	1500C-DLM	630	HS 087100 ⚡
1	SMART Pac Bridge Rectifier	2005M3		HS 087100 ⚡
1	Surface Closer (UNI Stop arm)	UNI4400	689	YA 087100
1	Kick Plate	K1050 - 10" x 1" LDW x 4BE x CSK	US32D- 316	RO 087100
1	Kick Plate	K1050 - 10" x 2" LDW x 4BE x CSK	US32D	RO 087100
1	Threshold	252x3AFG		PE 087100
1	Gasketing	S88D (head & jambs)		PE 087100
1	Sweep	315CN		PE 087100
1	Updater/Controller	NTX642-KIT (supplied by Division 28)		YA 281500 ⚡
1	Power Supply	AQL4-R8E1		SU 087100 ⚡
1	Wiring Diagrams	ELEVATION & POINT-TO- POINT		
1	Latch Protector	320CXL	US32D	RO 087100

Notes: CARD READER BY SECURITY VENDOR. PRESENTING AUTHORIZED CREDENTIAL TO CARD READER WILL UNLOCK ELECTRIC STRIKE ALLOWING ACCESS. FREE EGRESS BY LEVER.

**Set: 12.0**

Doors: 100 B

1	Continuous Hinge	CFMSLF-HD1 x PT		PE	087100	
1	Electric Power Transfer	EL-CEPT		SU	087100	⚡
1	Rim Exit Device, Nightlatch	7100 B MELR 121NL	630	YA	087100	⚡
1	Rim Cylinder	1109	626	YA	087100	
1	Pull	RM201	US32D	RO	087100	
1	Surface Closer (UNI Stop arm)	UNI4400	689	YA	087100	
1	Weatherseal	BY ALUMINUM DOOR SUPPLIER				
1	Sweep	345CV		PE	087100	
1	Updater/Controller	NTX642-KIT (supplied by Division 28)		YA	281500	⚡
1	ElectroLynx Harness	QC-C x LENGTH REQ'D		MK	087100	⚡
1	ElectroLynx Harness	QC-C1500P		MK	087100	⚡
1	Power Supply	AQL4-R8E1		SU	087100	⚡
1	Door Contact	BY SECURITY CONTRATOR				
1	Wiring Diagrams	ELEVATION & POINT-TO-POINT				

Notes: Operational Description: Door is normally closed and locked. Presenting a valid card to the card reader will momentarily retract latch of exit device, allowing entry. Entry also by key in cylinder. Manual egress at all times by pressing rail of exit device and exiting. Pressing rail of exit device will shunt door contact for authorized egress. Door contact monitors the position of the door and reports this status to the security system.

**Set: 13.0**

Doors: 200 A, 317 A, 318 A, 400 A

3	Hinge, Full Mortise	TA2714 4-1/2" x 4-1/2"	US26D	MK	087100	
1	Exit Device (rim, passage)	6100F TM628F	630	YA	087100	
1	Surface Closer (REG)	5801	689	YA	087100	
1	Kick Plate	K1050 - 10" x 2" LDW x 4BE x CSK	US32D	RO	087100	
1	Wall Stop	409	US32D	RO	087100	
1	Gasketing	S88D (head & jambs)		PE	087100	

**Set: 14.0**

Doors: 106 A, 111 A

3	Hinge, Full Mortise	TA2714 4-1/2" x 4-1/2"	US26D	MK	087100
1	Storeroom or Closet Lock	MO 4705LN	626	YA	087100
1	Surface Closer (REG)	5801	689	YA	087100
1	Wall Stop	409	US32D	RO	087100
1	Gasketing	S88D (head & jambs)		PE	087100

**Set: 15.0**

Doors: 109a A, 210a A, 310a A, 410a A

3	Hinge, Full Mortise	TA2714 4-1/2" x 4-1/2"	US26D	MK	087100
1	Storeroom or Closet Lock	MO 4705LN	626	YA	087100
1	Surface Closer (Stop Arm)	5831	689	YA	087100
1	Gasketing	S88D (head & jambs)		PE	087100

**Set: 16.0**

Doors: 103 A, 105 A

3	Hinge, Full Mortise	TA2714 4-1/2" x 4-1/2"	US26D	MK	087100
1	Entry Lock	MO 4704LN	626	YA	087100
1	Surface Closer (REG)	5801	689	YA	087100
1	Kick Plate	K1050 - 10" x 1" LDW x 4BE x CSK	US32D- 316	RO	087100
1	Kick Plate	K1050 - 10" x 2" LDW x 4BE x CSK	US32D	RO	087100
1	Wall Stop	409	US32D	RO	087100
1	Gasketing	S88D (head & jambs)		PE	087100

**Set: 17.0**

Doors: 105 B

3	Hinge, Full Mortise	TA2714 4-1/2" x 4-1/2"	US26D	MK	087100
1	Entry Lock	MO 4704LN	626	YA	087100
1	Conc Overhead Stop	6-X36	630	RF	087100
1	Surface Closer (REG)	5801	689	YA	087100
1	Kick Plate	K1050 - 10" x 1" LDW x 4BE x CSK	US32D- 316	RO	087100
1	Kick Plate	K1050 - 10" x 2" LDW x 4BE x CSK	US32D	RO	087100
1	Gasketing	S88D (head & jambs)		PE	087100

**Set: 18.0**

Doors: 104 A

3	Hinge, Full Mortise	TA2714 4-1/2" x 4-1/2"	US26D	MK 087100
1	Entry Lock	MO 4704LN	626	YA 087100
1	Surface Closer (Stop Arm)	5831	689	YA 087100
1	Kick Plate	K1050 - 10" x 1" LDW x 4BE x CSK	US32D- 316	RO 087100
1	Kick Plate	K1050 - 10" x 2" LDW x 4BE x CSK	US32D	RO 087100
1	Gasketing	S88D (head & jambs)		PE 087100

**Set: 19.0**

Doors: 102 B, 106a A, 109 A, 117 A, 210 A, 310 A, 402 A, 410 A, 415 A

3	Hinge, Full Mortise	TA2714 4-1/2" x 4-1/2"	US26D	MK 087100
1	Passage Latch	MO 4701LN	626	YA 087100
1	Surface Closer (REG)	5801	689	YA 087100
1	Kick Plate	K1050 - 10" x 1" LDW x 4BE x CSK	US32D- 316	RO 087100
1	Kick Plate	K1050 - 10" x 2" LDW x 4BE x CSK	US32D	RO 087100
1	Wall Stop	409	US32D	RO 087100
1	Gasketing	S88D (head & jambs)		PE 087100

**Set: 20.0**

Doors: 102 C

3	Hinge, Full Mortise	TA2714 4-1/2" x 4-1/2"	US26D	MK 087100
1	Passage Latch	MO 4701LN	626	YA 087100
1	Surface Closer (Stop Arm)	5831	689	YA 087100
1	Kick Plate	K1050 - 10" x 1" LDW x 4BE x CSK	US32D- 316	RO 087100
1	Kick Plate	K1050 - 10" x 2" LDW x 4BE x CSK	US32D	RO 087100
1	Gasketing	S88D (head & jambs)		PE 087100

**Set: 21.0**

Doors: 107 A, 108 A

3	Hinge, Full Mortise	TA2714 4-1/2" x 4-1/2"	US26D	MK 087100
1	Access Control Cyl Lock	MO NTB622-ACC (supplied	626	YA 281500 ⚡

		by Division 28)		
1	Surface Closer (REG)	5801	689	YA 087100
1	Kick Plate	K1050 - 10" x 1" LDW x 4BE x CSK	US32D- 316	RO 087100
1	Kick Plate	K1050 - 10" x 2" LDW x 4BE x CSK	US32D	RO 087100
1	Wall Stop	409	US32D	RO 087100
1	Gasketing	S88D (head & jambs)		PE 087100

Notes: Operational Description: Door is normally closed and locked. Presenting a valid card to the card reader on the lockset will momentarily unlock outside lever, allowing entry. Entry also by key in cylinder. Egress at all times by operating inside lever and exiting.

**Set: 22.0**

Doors: MISC

45	Software	ACC-SUB-001 (supplied by Division 28)		YA 281500
500	Credentials	NTX600-YALFOB-8K (supplied by Division 28)		YA 281500 ⚡
50	Credentials	NTX600-YALCRD-8K (supplied by Division 28)		YA 281500
1	Key Management System	T21		TA 087100
1	Software	ACC-SUB-INIT (supplied by Division 28)		YA 281500
1	Repair Kit	QC-R001		MK 087100 ⚡
2	Updater/Controller	NTX610-KIT		YA 281500
1	Crimp Tool	QC-R003		MK 087100 ⚡
16	Remote Training (HOUR)	SW-503Remote (supplied by Division 28)		MC 281500 ⚡
2	Site Training (DAY)	SW-503Site		MC 281500 ⚡

**Hardware Sets**

**Set: U1.0**

Doors: 005 AW

3 Hinge, Full Mortise	RC T2714	US15	MK 087100
1 Storeroom Lock	79 MO	619	YR 087100

Notes:

**Set: U2.0**

Doors: 005 A

3 Hinge, Full Mortise	RC T2714	US15	MK 087100
1 Storeroom Lock	79 MO	619	YR 087100
1 Door Stop	505/528	US15	RO 087100

Notes: PROVIDE HINGE PIN OR BASE STOP PER OPENING CONDITIONS.

**Set: U3.0**

Doors: 006 A, 006 AW, 007 A

3 Hinge, Full Mortise	RC T2714	US15	MK 087100
1 Passage Latch	11 MO	619	YR 087100
1 Door Stop	505/528	US15	RO 087100

Notes: PROVIDE HINGE PIN OR BASE STOP PER OPENING CONDITIONS.

**Set: U4.0**

Doors: 003 A, 004 A, 009 A

3 Hinge, Full Mortise	RC T2714	US15	MK 087100
1 Privacy Lock	21 MO	619	YR 087100
1 Door Stop	505/528	US15	RO 087100



Notes: PROVIDE HINGE PIN OR BASE STOP PER OPENING CONDITIONS.

**Set: U5.0**

Doors: 007 AP, 008 A, 008 AW, 010 A

6 Hinge, Full Mortise	RC T2714	US15	MK 087100
2 Single Dummy	81 MO	619	YR 087100
2 Roller Latch	592	US26D	RO 087100
2 Door Stop	505/528	US15	RO 087100

Notes: PROVIDE HINGE PIN OR BASE STOP PER OPENING CONDITIONS.

**Set: U6.0**

Doors: 001 A, 011 A

3 Hinge (spring)	1502 4-1/2" x 4-1/2"	US15	MK 087100
1 Interconnected Lock	YRC622-ACC MO	619	YR 281510 ⚡
1 Door Stop	456-RKW	US15	RO 087100
1 Threshold	EV232BL		PE 087100
1 Gasketing	S88D		PE 087100
1 Door Bottom	2343AV		PE 087100
1 Viewer	622	STNN	RO 087100

Notes: Operational Description: Door is normally closed and locked. Presenting a valid credential to the reader on the lockset will momentarily unlock outside lever allowing entry. Entry also by key in cylinder. Manual egress at all times by operating inside lever and exiting.

Door stop 456-RKW to be located at top of door. Verify floor condition and adjust the threshold type as required.

PROVIDE SECOND DOOR VIEWER (622) AT BARRIER FREE UNITS.

END OF SECTION 080671

**Attachment B - Specification Section 01 74 19 Construction Waste Management and Disposal**

Allies & Ross Management and Development Corporation  
IFB#2023-40-G-E-P-M  
New Construction of Northview Midrise

## SECTION 01 74 19 - CONSTRUCTION WASTE MANAGEMENT AND DISPOSAL

### PART 1 - GENERAL

#### 1.1 SUMMARY

- A. Section includes administrative and procedural requirements for the following:
  - 1. Recycling nonhazardous construction waste.
  - 2. Disposing of nonhazardous construction waste.
- B. Related Requirements:
  - 1. Section 01 81 13 "Sustainable Design Requirements".

#### 1.2 DEFINITIONS

- A. Construction Waste: Building, structure, and site improvement materials and other solid waste resulting from construction, remodeling, renovation, or repair operations. Construction waste includes packaging.
- B. Demolition Waste: Building, structure, and site improvement materials resulting from demolition operations.
- C. Disposal: Removal of demolition or construction waste and subsequent salvage, sale, recycling, or deposit in landfill, incinerator acceptable to authorities having jurisdiction, or designated spoil areas on Owner's property.
- D. Recycle: Recovery of demolition or construction waste for subsequent processing in preparation for reuse.
- E. Salvage: Recovery of demolition or construction waste and subsequent sale or reuse in another facility.
- F. Salvage and Reuse: Recovery of demolition or construction waste and subsequent incorporation into the Work.

1.3 ACTION SUBMITTALS

- A. Waste Management Plan: Submit plan within 7 days of date established for commencement of the Work .

1.4 INFORMATIONAL SUBMITTALS

1.5 QUALITY ASSURANCE

- A.

1.6 WASTE MANAGEMENT PLAN

- A. General: Develop a waste management plan according to requirements in this Section. Plan shall consist of waste identification, waste reduction work plan, and cost/revenue analysis. Indicate quantities by weight or volume, but use same units of measure throughout waste management plan.
- B. Waste Identification: Indicate anticipated types and quantities of site-clearing and construction waste generated by the Work. Include estimated quantities and assumptions for estimates.
- C. Waste Reduction Work Plan: List each type of waste and whether it will be salvaged, recycled, or disposed of in landfill or incinerator. Include points of waste generation, total quantity of each type of waste, quantity for each means of recovery, and handling and transportation procedures.
  - 1. Salvaged Materials for Reuse: For materials that will be salvaged and reused in this Project, describe methods for preparing salvaged materials before incorporation into the Work.
  - 2. Salvaged Materials for Sale: For materials that will be sold to individuals and organizations, include list of their names, addresses, and telephone numbers.
  - 3. Salvaged Materials for Donation: For materials that will be donated to individuals and organizations, include list of their names, addresses, and telephone numbers.
  - 4. Recycled Materials: Include list of local receivers and processors and type of recycled materials each will accept. Include names, addresses, and telephone numbers.
  - 5. Disposed Materials: Indicate how and where materials will be disposed of. Include name, address, and telephone number of each landfill and incinerator facility.
  - 6. Handling and Transportation Procedures: Include method that will be used for separating recyclable waste including sizes of containers, container labeling, and designated location where materials separation will be performed.

## PART 2 - PRODUCTS

## PART 3 - EXECUTION

### 3.1 PLAN IMPLEMENTATION

- A. General: Implement approved waste management plan. Provide handling, containers, storage, signage, transportation, and other items as required to implement waste management plan during the entire duration of the Contract.
- B. Waste Management Coordinator: Engage a waste management coordinator to be responsible for implementing, monitoring, and reporting status of waste management work plan.
- C. Training: Train workers, subcontractors, and suppliers on proper waste management procedures, as appropriate for the Work.
  - 1. Distribute waste management plan to everyone concerned within three days of submittal return.
  - 2. Distribute waste management plan to entities when they first begin work on-site. Review plan procedures and locations established for salvage, recycling, and disposal.
- D. Site Access and Temporary Controls: Conduct waste management operations to ensure minimum interference with roads, streets, walks, walkways, and other adjacent occupied and used facilities.
  - 1. Designate and label specific areas on Project site necessary for separating materials that are to be salvaged and recycled.
  - 2. Comply with Section 01 50 00 "Temporary Facilities and Controls" for controlling dust and dirt, environmental protection, and noise control.

E.

### 3.2 SALVAGING DEMOLITION WASTE

- A.
- B. Salvaged Items for Reuse in the Work:
  - 1. Clean salvaged items.
  - 2. Pack or crate items after cleaning. Identify contents of containers with label indicating elements, date of removal, quantity, and location where removed.
  - 3. Store items in a secure area until installation.
  - 4. Protect items from damage during transport and storage.
  - 5. Install salvaged items to comply with installation requirements for new materials and equipment. Provide connections, supports, and miscellaneous materials necessary to make items functional for use indicated.
- C. Salvaged Items for : on Project site.

### 3.3 RECYCLING AND CONSTRUCTION WASTE, GENERAL

- A. General: Recycle paper and beverage containers used by on-site workers.
- B. Recycling Incentives: Revenues, savings, rebates, tax credits, and other incentives received for recycling waste materials shall accrue to Contractor .
- C. Preparation of Waste: Prepare and maintain recyclable waste materials according to recycling or reuse facility requirements. Maintain materials free of dirt, adhesives, solvents, petroleum contamination, and other substances deleterious to the recycling process.
- D. Procedures: Separate recyclable waste from other waste materials, trash, and debris. Separate recyclable waste by type at Project site to the maximum extent practical according to approved construction waste management plan.
  - 1. Provide appropriately marked containers or bins for controlling recyclable waste until removed from Project site. Include list of acceptable and unacceptable materials at each container and bin.
    - a. Inspect containers and bins for contamination and remove contaminated materials if found.
  - 2. Stockpile processed materials on-site without intermixing with other materials. Place, grade, and shape stockpiles to drain surface water. Cover to prevent windblown dust.
  - 3. Store components off the ground and protect from the weather.
  - 4. Remove recyclable waste from Owner's property and transport to recycling receiver or processor as often as required to prevent overfilling bins.

### 3.4 DISPOSAL OF WASTE

- A. General: Except for items or materials to be salvaged or recycled, remove waste materials from Project site and legally dispose of them in a landfill or incinerator acceptable to authorities having jurisdiction.
  - 1. Except as otherwise specified, do not allow waste materials that are to be disposed of accumulate on-site.
  - 2. Remove and transport debris in a manner that will prevent spillage on adjacent surfaces and areas.
- B. General: Except for items or materials to be salvaged or recycled, remove waste materials and legally dispose of at designated spoil areas on Owner's property.
- C. Burning: Do not burn waste materials.

### 3.5 ATTACHMENTS

END OF SECTION 01 74 19

**Attachment C - Revised Portion of Mechanical First Floor Plan M101**

Allies & Ross Management and Development Corporation  
IFB#2023-40-G-E-P-M  
New Construction of Northview Midrise



**Jams Consulting, LLC**  
 ENGINEERING ENVIRONMENTS  
 807 James Street  
 Suite 301  
 Pittsburgh, PA 15212  
 Ph: 412.697.3590  
 www.jamsconsulting.com

seal

**ADDENDA #4**

**general notes**

1. Any conflicts in the drawings or between new and existing construction shall be referred to the Architect.
2. Contractor shall verify all dimensions and existing conditions in the field and advise Fukui Architects, Pc of any discrepancies between, additions to, deletions from, or alterations to any and all conditions prior to proceeding with any phase of work. **Do not scale drawings.**
3. All work shall be installed in accordance with applicable codes and regulations.
4. Contractor shall be responsible for the patching, repainting, and preparations of all existing floor, wall, and ceiling surfaces as required to receive scheduled finishes.
5. All items shown on drawings are finished construction assemblies. Contractor shall provide and install all material required for finished assemblies.
6. All reports, plans, specifications, computer files, field data, notices, and other documents and instruments prepared by the Architect in instruments of service shall remain the property of the Architect. The Architect shall retain all common law statutory, and other reserved rights, including the copyright thereto.

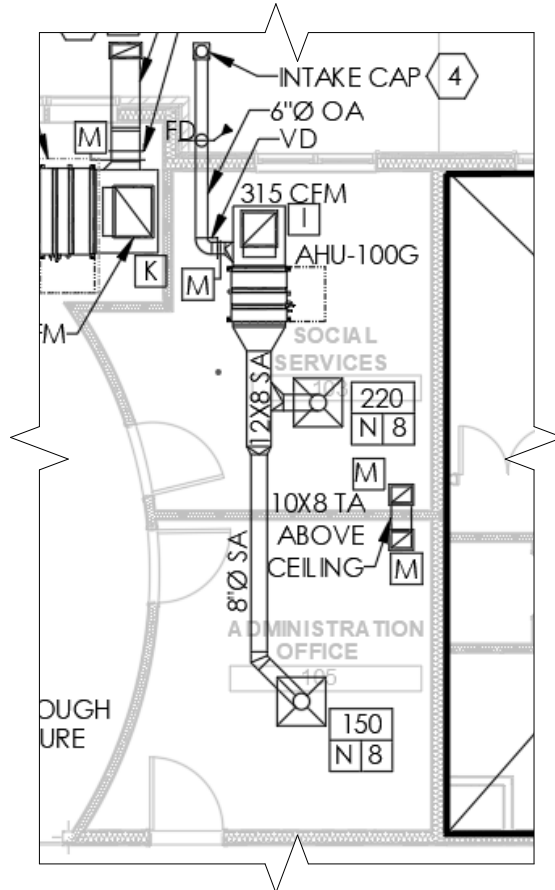
**revisions**

**project title**

**Owner:**  
 HACP  
 200 Ross Street  
 Pittsburgh, PA, 15219  
**Client:**  
 Allies & Ross Management and  
 Development Corporation  
 (ARMDC)  
 200 Ross Street  
 Pittsburgh, PA 15219  
**Project Location:**  
 Northview Heights Midrise  
 246 Penfort Street  
 Pittsburgh, PA 15214

**drawing title**

REVISED PORTION OF  
 MECHANICAL FIRST FLOOR  
 PLAN M101



1

**REVISED PORTION OF MECHANICAL FIRST FLOOR PLAN M101**

SCALE: 1/8" = 1'-0"

scale	As Noted
date	January 17, 2024
no.	1
of.	1

**Sheet No.**  
**SD1.1**  
 Project #2040



**Attachment D - Specification Section 27 15 13 Communications Copper Horizontal Cabling**

Allies & Ross Management and Development Corporation  
IFB#2023-40-G-E-P-M  
New Construction of Northview Midrise

## SECTION 271513 - COMMUNICATIONS COPPER HORIZONTAL CABLING

### PART 1 - GENERAL

#### 1.1 RELATED DOCUMENTS

- A. Drawings and general provisions of the Contract, including General and Supplementary Conditions and Specification Sections, apply to this Section.

#### 1.2 SUMMARY

- A. Section Includes:
  - 1. Category 6 twisted pair cable.
  - 2. Cabling identification products.
  - 3. Grounding provisions for twisted pair cable.

#### 1.3 DEFINITIONS

- A. Cross-Connect: A facility enabling the termination of cable elements and their interconnection or cross-connection.
- B. EMI: Electromagnetic interference.
- C. FTP: Shielded twisted pair.
- D. F/FTP: Overall foil screened cable with foil screened twisted pair.
- E. F/UTP: Overall foil screened cable with unscreened twisted pair.
- F. IDC: Insulation displacement connector.
- G. LAN: Local area network.
- H. Jack: Also commonly called an "outlet," it is the fixed, female connector.
- I. Plug: Also commonly called a "connector," it is the removable, male telecommunications connector.
- J. Screen: A metallic layer, either a foil or braid, placed around a pair or group of conductors.
- K. Shield: A metallic layer, either a foil or braid, placed around a pair or group of conductors.
- L. S/FTP: Overall braid screened cable with foil screened twisted pair.
- M. S/UTP: Overall braid screened cable with unscreened twisted pairs.

- N. UTP: Unscreened (unshielded) twisted pair.

#### 1.4 COPPER HORIZONTAL CABLING DESCRIPTION

- A. Horizontal cable cabling system shall provide interconnections between Distributor A, Distributor B, or Distributor C, and the equipment outlet, otherwise known as "Cabling Subsystem 1," in the telecommunications cabling system structure. Cabling system consists of horizontal cables, intermediate and main cross-connects, mechanical terminations, and patch cords or jumpers used for horizontal-to-horizontal cross-connection.
  - 1. TIA-568-C.1 requires that a minimum of two equipment outlets be installed for each work area.
  - 2. Horizontal cabling shall contain no more than one transition point or consolidation point between the horizontal cross-connect and the telecommunications equipment outlet.
  - 3. Bridged taps and splices shall not be installed in the horizontal cabling.
- B. A work area is approximately 100 sq. ft. and includes the components that extend from the equipment outlets to the station equipment.
- C. The maximum allowable horizontal cable length is 295 feet This maximum allowable length does not include an allowance for the length of 16 feet to the workstation equipment or in the horizontal cross-connect.

#### 1.5 SUBMITTALS

- A. Product Data: For each type of product.

#### 1.6 QUALITY ASSURANCE

- A. Installer Qualifications: Cabling Installer must have personnel certified by BICSI on staff.
- B. Testing Agency Qualifications: Testing agency must have personnel certified by BICSI on staff.
  - 1. Testing Agency's Field Supervisor: Currently certified by BICSI as an RCDD.

#### 1.7 DELIVERY, STORAGE, AND HANDLING

- A. Test cables upon receipt at Project site.
  - 1. Test each pair of twisted pair cable for open and short circuits.

#### 1.8 PROJECT CONDITIONS

- A. Environmental Limitations: Do not deliver or install cables and connecting materials until wet work in spaces is complete and dry, and temporary HVAC system is operating and maintaining ambient temperature and humidity conditions at occupancy levels during the remainder of the construction period.

1.9 COORDINATION

- A. Coordinate layout and installation of telecommunications pathways and cabling with Owner's telecommunications and LAN equipment and service suppliers.

PART 2 - PRODUCTS

2.1 PERFORMANCE REQUIREMENTS

- A. General Performance: Horizontal cabling system shall comply with transmission standards in TIA-568-C.1, when tested according to test procedures of this standard.
- B. Telecommunications Pathways and Spaces: Comply with TIA-569-D.
- C. Grounding: Comply with TIA-607-B.

2.2 GENERAL CABLE CHARACTERISTICS

- A. Listed and labeled by an NRTL acceptable to authorities having jurisdiction as complying with the applicable standard and NFPA70 for the following types:
  - 1. Communications, Plenum Rated: Type CMP complying with UL 1685
  - 2. Communications, Non-plenum: Type CMR complying with UL 1666
- B. RoHS compliant.

2.3 CATEGORY 6 TWISTED PAIR CABLE

- A. Description: Four-pair, balanced-twisted pair cable, with internal spline, certified to meet transmission characteristics of Category 6 cable at frequencies up to 250MHz.
- B. Standard: Comply with NEMA WC 66/ICEA S-116-732 and TIA-568-C.2 for Category 6 cables.
- C. Conductors: 100-ohm, 23 AWG solid copper.
- D. Shielding/Screening: Unshielded twisted pairs (UTP).
- E. Cable Rating: Plenum.
- F. Jacket: White,(telephone), Blue (Data) thermoplastic.

2.4 TWISTED PAIR CABLE HARDWARE

- A. Description: Hardware designed to connect, splice, and terminate twisted pair copper communications cable.

- B. General Requirements for Twisted Pair Cable Hardware:
  - 1. Comply with the performance requirements of Category 6.
  - 2. Comply with TIA-568-C.2, IDC type, with modules designed for punch-down caps or tools.
  - 3. Cables shall be terminated with connecting hardware of same category or higher.
- C. Source Limitations: Obtain twisted pair cable hardware from same manufacturer as twisted pair cable, from single source.
- D. Jacks and Jack Assemblies:
  - 1. Female; eight position; modular; fixed telecommunications connector designed for termination of a single four-pair, 100-ohm, unshielded or shielded twisted pair cable.
  - 2. Designed to snap-in to a patch panel or faceplate.
  - 3. Standard: Comply with TIA-568-C.2.
- E. Faceplate:
  - 1. One, or Two port, vertical single gang faceplates designed to mount to single gang wall boxes.
  - 2. Plastic Faceplate: High-impact plastic. Coordinate color with Section "Wiring Devices."
  - 3. For use with snap-in jacks accommodating any combination of twisted pair, optical fiber, and coaxial work area cords.
    - a. Flush mounting jacks, positioning the cord at a 45-degree angle.
- F. Legend:
  - 1. Machine printed, in the field, using adhesive-tape label.
  - 2. Snap-in, clear-label covers and machine-printed paper inserts.

## 2.5 IDENTIFICATION PRODUCTS

- A. Comply with TIA-606-B and UL969 for a system of labeling materials, including label stocks, laminating adhesives, and inks used by label printers.

## 2.6 GROUNDING

- A. Comply with TIA-607-B.

## PART 3 - EXECUTION

### 3.1 WIRING METHODS

- A. Wiring Method: Conceal conductors and cables in accessible ceilings, walls, and floors where possible.

- B. Wiring within Enclosures: Bundle, lace, and train cables within enclosures. Connect to terminal points with no excess and without exceeding manufacturer's limitations on bending radii. Provide and use lacing bars and distribution spools. Install conductors parallel with or at right angles to sides and back of enclosure.

### 3.2 INSTALLATION OF TWISTED-PAIR HORIZONTAL CABLES

- A. Comply with NECA 1 and NECA/BICSI568.
- B. General Requirements for Cabling:
  - 1. Do not untwist twisted pair cables more than 1/2 inch from the point of termination to maintain cable geometry.
  - 2. Terminate all conductors; no cable shall contain unterminated elements. Make terminations only at indicated outlets, terminals, cross-connects, and patch panels. Cables may not be spliced.
  - 3. Do not install bruised, kinked, scored, deformed, or abraded cable. Do not splice cable between termination, tap, or junction points. Remove and discard cable if damaged during installation, and replace it with new cable.
  - 4. Cold-Weather Installation: Bring cable to room temperature before dereeling. Heat lamps shall not be used for heating.
  - 5. In the communications equipment room, install a 10-foot long service loop on each end of cable.
- C. Open-Cable Installation:
  - 1. Install cabling with horizontal and vertical cable guides in telecommunications spaces with terminating hardware and interconnection equipment.
  - 2. Suspend twisted pair cabling, not in a wireway or pathway, a minimum of 8 inches above ceilings by cable supports not more than 60 inches apart.
  - 3. Cable shall not be run through structural members or in contact with pipes, ducts, or other potentially damaging items.
- D. Separation from EMI Sources:
  - 1. Comply with recommendations from BICSI's "Telecommunications Distribution Methods Manual" and TIA-569-D for separating unshielded copper communication cable from potential EMI sources, including electrical power lines and equipment.
  - 2. Separation between open communications cables or cables in nonmetallic raceways and unshielded power conductors and electrical equipment shall be as follows:
    - a. Electrical Equipment Rating Less Than 2 kVA: A minimum of 5 inches
    - b. Electrical Equipment Rating between 2 and 5 kVA: A minimum of 12 inches
    - c. Electrical Equipment Rating More Than 5 kVA: A minimum of 24 inches
  - 3. Separation between communications cables in grounded metallic raceways and unshielded power lines or electrical equipment shall be as follows:
    - a. Electrical Equipment Rating Less Than 2 kVA: A minimum of 2-1/2 inches
    - b. Electrical Equipment Rating between 2 and 5 kVA: A minimum of 6 inches
    - Electrical Equipment Rating More Than 5 kVA: A minimum of 12 inches

3.3 FIRESTOPPING

- A. Comply with requirements in Section "Penetration Firestopping."
- B. Comply with TIA-569-D, Annex A, "Firestopping."
- C. Comply with "Firestopping Systems" Article in BICSI's "Telecommunications Distribution Methods Manual."

3.4 GROUNDING

- A. Install grounding according to the "Grounding, Bonding, and Electrical Protection" chapter in BICSI's "Telecommunications Distribution Methods Manual."
- B. Comply with TIA-607-B and NECA/BICSI-607.
- C. Locate grounding bus bar to minimize the length of bonding conductors. Fasten to wall, allowing at least a 2-inch clearance behind the grounding bus bar. Connect grounding bus bar to suitable electrical building ground, using a minimum No. 4 AWG grounding electrode conductor.
- D. Bond metallic equipment to the grounding bus bar, using not smaller than a No. 6 AWG equipment grounding conductor.

END OF SECTION 271513

**Attachment E- Specification Section 06 16 26 Underlayment**

Allies & Ross Management and Development Corporation  
IFB#2023-40-G-E-P-M  
New Construction of Northview Midrise



## SECTION 06 16 26 - UNDERLAYMENT

### PART 1 - PART 1 – GENERAL

#### 1.1 SECTION INCLUDES

- A. Magnesium Oxide (MgO) Panels for use as underlayment and as part of a fire-rated and sound-attenuating assembly.

#### 1.2 ACTION SUBMITTALS

- A. Product Data: For each type of underlayment product. Include manufacturer's technical data indicating performance properties.
- B. Shop Drawings: Indicating location and extent of underlayment and assemblies. Include details of joints, corners, and penetrations.

#### 1.3 INFORMATIONAL SUBMITTALS

- A. Evaluation Reports: From ICC NTA for underlayment products.
- B. Product Certifications: From manufacturer, indicating that underlayment products comply with indicated Performance Criteria.
- C. Warranty: Sample unexecuted copy of manufacturer warranty.

#### 1.4 CLOSEOUT SUBMITTALS

- A. Warranty: Executed copy of manufacturer warranty.

#### 1.5 DELIVERY, STORAGE, AND HANDLING

- A. Comply with manufacturer's written instructions for storage prior to installation.
  - 1. Store panels horizontally and fully supported.

#### 1.6 WARRANTY

- A. Manufacturer's Warranty: Manufacturer's standard form in which underlayment manufacturer agrees to repair or replace products that demonstrate deterioration or failure under normal use due to manufacturing defects within warranty period, when installed according to manufacturer's instructions.
  - 1. Warranty Period for Underlayment Products: 10-years from date of manufacture.

## PART 2 - PRODUCTS

### 2.1 PERFORMANCE REQUIREMENTS

- A. Fire Resistance Assembly in accordance with UL263 Design No L601 or L602
  - 1. Rating: 1-Hour Fire Resistant Assembly
- B. Bare Sound Rating:
  - 1. STC: 56
  - 2. IIC: 41
  - 3. HIIC: 40
- C. Structural Design Values
  - 1. Maximum Allowable Uniform Loading (satisfies L/360 LL and L/240 TL deflection – 3 span condition. Panel long dimension perpendicular to floor framing and edges supported by framing.
  - 2. Joist/Truss spacing 16 inches on center: 120 psf LL/ 140 psf TL
  - 3. Joist/Truss spacing 19.2 inches on center: 100 psf LL/ 120 psf TL
  - 4. Joist/Truss spacing 24 inches on center 70 psf LL / 90 psf TL
  - 5. Maximum Allowable Diaphragm Capacity (unblocked): 360 plf

### 2.2 BASIS OF DESIGN

- A. EXACOR™ Subfloor by Huber Engineered Woods LLC, Charlotte NC; Phone: (800) 933-9220; Website: www.EXACOR.com.
- B. Substitutions: Only products approved by the architect will be acceptable. Submit the following listed items (2-5) with proper documentation as required for substitution requests. Proper documentation shall include any proposed changes to UL assemblies, demonstration that all fire, STC, and IIC ratings are maintained. Changes shall not result in the increase in cost to other trades.” Allow an additional (15) working days for any substitution review in addition to the standard review time for submittals.
- C. Request for substitutions must follow the requirements in SECTION 01 25 00 - SUBSTITUTION PROCEDURES.

### 2.3 MAGNESIUM OXIDE SUBFLOOR

- A. Physical Characteristics
  - 1. Thickness: 3/4-inch (20mm) nominal
  - 2. Panel Size: 48 by 96 inches (1220 by 2440mm) nominal
  - 3. Edge profile: Tongue and Groove
- B. Fire-Resistant Characteristics in accordance with ASTM E84 - Standard Test Method for Surface Burning Characteristics of Building Materials
  - 1. Flame Spread: 0

2. Smoke Developed: 0
  - C. Water Vapor Permeable:
    1. ASTM E96 – Standard Test Methods for Water Vapor Transmission
      - a. Greater than or equal to 13 perms according to ASTM E96 Method B
      - b.
  - D. Mold Resistance: No mold growth observed in accordance with ASTM G21 – Standard Practice for Determining Resistance of Synthetic Polymeric Materials to Fungi.
- 2.4 FASTENERS
- A. Fasteners, General: Size and type complying with manufacturer's written instructions for Project conditions and requirements of authorities having jurisdiction.
  - B. Nails:
    1. Annular Ring shank nails with shank diameter of 0.113 inches
    2. Minimum #6 by 2 inch (50.8 mm)
    3. Corrosion Resistant: Powder coated, or Stainless Steel
    4. Conform with ICC-ES AC116 - Acceptance Criteria for Nails and Spikes and ICC-ES AC201 Acceptance Criteria for Staples
  - C. Screws:
    1. Minimum #8 by 2 inch (50.8 mm)
    2. Corrosion Resistant: Powder coated, or Stainless Steel
    3. ICC-ES ESR-1539 - Power Driven Staples and Nails for Use in Engineered and Non-Engineered Connections or ICC-ES NER-272 - Power Driven Staples and Nails for Use in All Types of Building Construction
  - D. Adhesive:
    1. Polyurethane or solvent-based
    2. Panel manufacturer and adhesive manufacturer recommended for indicated use
    3. Conforms with ASTM D3498 - Standard Specification for Adhesives for Field-Gluing Structural Panels to Wood Based Floor System Framing and APA AFG-01 - Adhesives for Field-Gluing Plywood to Wood Framing.

## PART 3 - EXECUTION

### 3.1 EXAMINATION

- A. Examine framing spacing and alignment to determine if work is ready to receive underlayment. Proceed with underlayment work once conditions meet requirements.
  1. Confirm flatness is within tolerances required for flooring.

### 3.2 MAGNESIUM OXIDE BOARD UNDERLAYMENT INSTALLATION

#### A. Underlayment Installation, General:

1. Install underlayment in accordance with manufacturer's written instructions, requirements of applicable Evaluation Reports; Fire-Resistant Assembly; Sound rated assembly, and requirements of authorities having jurisdiction.
2. Support shiplap edges of EXACOR underlayment with framing or blocking in accordance with local building code requirements and joist/truss manufacturer.
3. Utilize 2 by blocking flatwise between framing members to provide panel edge support.
4. Install blocking with top surface flush with the top of floor framing members to provide uniform support for underlayment panels.
5. Maintain designed expansion joints through underlayment. Do not bridge designed expansion joints in structural panel underlayment.
6. Coordinate termite and decay protection when EXACOR underlayment to be installed within 8 inches of exposed earth.

#### B. Installation:

1. Glue and nail to wood framing or subfloor
2. Mechanical Fastening Pattern:
  - a. Edges: 6 inches on center
  - b. Field of panel: 12 inches on center
  - c. Place fasteners no closer than ½ inch to the edge
  - d. Place fastener no closer to the corner than 2 inches.
  - e. Fastener penetration:
    - 1)
    - 2) Nails to penetrate 1 framing members 1.25 inch minimum
3. Do not bridge expansion joints
4. Long direction of panels to span a minimum of two joists, short end to be supported over framing and additional blocking for shiplap edges.
5. Butt panel edges together. Stagger end joints of adjacent panel runs.

### 3.3 PROTECTION AND REPAIR

- A. Protect exposed board surfaces from damage due to high construction traffic and concentrated loads during construction.
- B. Patch small gaps (less than 2 sq inches) and divots in underlayment with elastomeric patching compound
- C. Where large repairs are required, cut out damaged area and replace with piece of underlayment, installing in same manner as initial installation. Apply patching compound to transition between board and patch.

### 3.4 PREPARATION OF FINISH FLOOR COVERINGS

- A. Remove dust, dirt and debris from underlayment surface. Ensure panel surface is free from water, oil, grease and other contaminants.

- B. Verify underlayment mechanical fasteners are flush with panel face or slightly below.
- C. Identify and correct imperfections in the surface and repair damage as indicated above.
- D. Proceed with specific finish preparation prior to installation of flooring finish.

END OF SECTION 06 16 26

**Attachment F – Form of Bid - P 00331-1(r1) - 9(r1)**

Allies & Ross Management and Development Corporation  
IFB#2023-40 –G-E-P-M  
New Construction of Northview Midrise

ALLIES & ROSS MANAGEMENT AND DEVELOPMENT CORPORATION

Northview Midrise  
AMP - PA001000009

ARMDC Contract No. 2023-40

FORM OF BID

PLUMBING CONSTRUCTION

Contract No.: 2023-40

TO: ALLIES & ROSS MANAGEMENT  
AND DEVELOPMENT  
CORPORATION  
*(Hereinafter called the "ARMDC")*  
412 Boulevard of the Allies, 6th Fl.  
Pittsburgh, PA 15219

BIDDER:

\_\_\_\_\_  
*(Bidder Name)*

\_\_\_\_\_  
*(Business Address)*

\_\_\_\_\_  
*(Telephone)*

1. The undersigned Bidder, having visited the site, having become familiar with local conditions affecting the cost of the work, **including all City of Pittsburgh current code requirements**, and having become familiar with the Invitation for Bids (the IFB) issued by the Authority, which consists of the following:

- Project Manual, dated **December 18, 2023** containing Bidding Requirements, Contract Forms, Conditions of the Contract, and Specifications
- Project Drawings, dated **December 3, 2023**
- Addenda (if any) as enumerated in this Form of Bid

hereby proposes to provide all supervision, technical personnel, labor, materials, machinery, tools, appurtenances, equipment and services required to construct and complete the Plumbing Construction Work as described in Document 00330 "S cope of Work for Plumbing Construction" and as indicated in the Drawings and Specifications, for the following Firm Fixed Price:

\_\_\_\_\_ Dollars (\$ \_\_\_\_\_)  
*(Insert Bid Price in words)* *(Insert Bid Price in Figures)*

**The Bidder shall include in its Base Bid above the following Alternate items: To the extent necessary, ARMDC will determine the application of the Alternates in accordance with Clause 8 of the Instructions to Bidders (HUD 5369).**

A. Deduct Alternative No. 001, No. 2: [LIST WHAT THE ACTUAL DEDUCT]

\_\_\_\_\_  
*(Insert Price in Figures)*

2. Bid security [ ] is [ ] is not submitted with this bid.

*(Check one)*

Bid Security is in amount of:

\_\_\_\_\_ % of the bid OR \_\_\_\_\_ Dollars (\$ \_\_\_\_\_)

Bid Security is in the form of:

- |                          |                 |                          |                           |
|--------------------------|-----------------|--------------------------|---------------------------|
| <input type="checkbox"/> | Certified Check | <input type="checkbox"/> | Bank Draft                |
| <input type="checkbox"/> | U.S. Govt. Bond | <input type="checkbox"/> | Bid Bond (Document 00410) |

3. The Bidder hereby acknowledges receipt of the following Addenda, if any, as issued by the Authority:

Total number of Addenda \_\_\_\_\_ (if none, so state)

- |                                |                                |
|--------------------------------|--------------------------------|
| Addendum No. _____ dated _____ | Addendum No. _____ dated _____ |
| Addendum No. _____ dated _____ | Addendum No. _____ dated _____ |
| Addendum No. _____ dated _____ | Addendum No. _____ dated _____ |
| Addendum No. _____ dated _____ | Addendum No. _____ dated _____ |
| Addendum No. _____ dated _____ | Addendum No. _____ dated _____ |
| Addendum No. _____ dated _____ | Addendum No. _____ dated _____ |

4. The Bidder attaches hereto the Special Provisions (Document 00021);
5. The Bidder attaches hereto the Statement of Bidder's Qualifications (Document 00420);
6. The Bidder attaches hereto the Section 3 Opportunities Plan (Document 00433), MBE/WBE Solicitation and Commitment Record (Document 00434), Bidder Manpower Plan (Document 00435), and Previous Related Experience (Document 00436);
7. The Bidder attaches hereto the Bidder's Representations, Certifications and Other Statements of Bidders (Document HUD 5369-A), Previous Participation Certificate (Document HUD-2530);
8. The Bidder attaches hereto the Bidder's Special Provisions – Notice to All Prospective Bidders (Document 00437), Non-Collusion Affidavit (Document 00485);
9. The Bidder attaches hereto the completed Form of Agreement (Document 00500);
10. The Bidder attaches hereto the Supplemental General Conditions (ARMDC Document).



**PROPRIETORSHIP SIGNATURE PAGE**

SHEET - FB-I

(To be used when the Bidder is an individual doing business as a Sole Proprietorship.)

THE BIDDER CERTIFIES THAT THE BIDDER IS:

- An individual doing business in his/her own name
- An individual doing business under a fictitious or assumed name  
*(Complete Proprietorship Fictitious Name Disclosure below)*

SIGNED, SE ALED AND DELIVERED

this \_\_\_\_\_ day of \_\_\_\_\_ 20 \_\_\_\_\_.

	<i>(Printed or Typed Name)</i>		<i>(Printed or Typed Name)</i>
<i>Witness</i>	<i>Principal</i>	{	{
	<i>(Signature and Date)</i>		<i>(Signature and Date)</i>

**PROPRIETORSHIP FICTITIOUS NAME DISCLOSURE**

*(To be used when the Bidder is an individual doing business under a fictitious or assumed name.)*

\_\_\_\_\_ is an individual trading under a fictitious or  
*(Proprietor's Name)*

assumed name of \_\_\_\_\_ and  **has**  **has not** registered under  
*(Fictitious or Assumed Name Used as Bidder's Name) (Check one)*

the Fictitious Names Act of Pennsylvania, namely the Act of May 24, 1945,P.L.967, as amended, 54 P.S.sec.281.1 et seq.

	<i>(Printed or Typed Name)</i>		<i>(Printed or Typed Name)</i>
<i>Witness</i>	<i>Principal</i>	{	{
	<i>(Signature and Date)</i>		<i>(Signature and Date)</i>

**PARTNERSHIP SIGNATURE PAGE**

SHEET - FB-P-1

(To be used when the Bidder is an individual doing business as a Partnership.)

THE BIDDER CERTIFIES THAT THE BIDDER IS:

- A General Partnership (Attach completed Sheet FB-P-3)
  - Doing business under Partnership Name
  - Doing business under a fictitious or assumed name  
(Complete Partnership Fictitious Name Disclosure Sheet FB-P-2)
  
- A Limited Partnership (Attach completed Sheet FB-P-3)
  - Doing business under Partnership Name
  - Doing business under a fictitious or assumed name  
(Complete Partnership Fictitious Name Disclosure Sheet FB-P-2)

SIGNED, SEALED AND DELIVERED

this \_\_\_\_\_ day of \_\_\_\_\_ 20 \_\_\_\_\_.

	_____		_____
	<i>(Printed or Typed Name)</i>		<i>(Printed or Typed Name)</i>
<i>Witness</i>	<i>Partner *</i>		
{	_____	{	_____
	<i>(Signature and Date)</i>		<i>(Signature and Date)</i>

	_____		_____
	<i>(Printed or Typed Name)</i>		<i>(Printed or Typed Name)</i>
<i>Witness</i>	<i>Partner *</i>		
{	_____	{	_____
	<i>(Signature and Date)</i>		<i>(Signature and Date)</i>

\* If the Bidder is a partnership, the Bid and Contract must be signed in the name of the partnership by at least two general partners, and the names and addresses of all the partners must be listed on the certificate on Sheet FB-P-3.

**PARTNERSHIP FICTITIOUS NAME DISCLOSURE**  
*(To be used when the Bidder is a partnership doing business under a fictitious or assumed name.)*

SHEET FB-P-2

\_\_\_\_\_ is a partnership trading under a fictitious or  
*(Partnership's Name)*

assumed name of \_\_\_\_\_ and  **has**  **has not** registered under  
*(Fictitious or Assumed Name Used as Bidder's Name) (Check one)*

the Fictitious Names Act of Pennsylvania, namely the Act of May 24, 1945, P.L. 967, as amended, 54 P.S. sec. 281.1 et seq.

<i>Witness</i>	_____	<i>Partner*</i>	_____
	<i>(Printed or Typed Name)</i>		<i>(Printed or Typed Name)</i>
{		{	
	_____		_____
	<i>(Signature and Date)</i>		<i>(Signature and Date)</i>

**PARTNERSHIP CERTIFICATE**  
(To be used when the Bidder is a partnership.)

SHEET FB-P-3

I, as partner of \_\_\_\_\_,  
*(Name of Partnership)*  
certify that the following are the names and addresses of all the partners of said partnership.

Name: \_\_\_\_\_ Name: \_\_\_\_\_

Address: \_\_\_\_\_ Address: \_\_\_\_\_

City: \_\_\_\_\_ City: \_\_\_\_\_

Name: \_\_\_\_\_ Name: \_\_\_\_\_

Address: \_\_\_\_\_ Address: \_\_\_\_\_

City: \_\_\_\_\_ City: \_\_\_\_\_

Name: \_\_\_\_\_ Name: \_\_\_\_\_

Address: \_\_\_\_\_ Address: \_\_\_\_\_

City: \_\_\_\_\_ City: \_\_\_\_\_

Name: \_\_\_\_\_ Name: \_\_\_\_\_

Address: \_\_\_\_\_ Address: \_\_\_\_\_

City: \_\_\_\_\_ City: \_\_\_\_\_

(Use additional sheets as required.)

<i>Witness</i>	_____	<i>Partner*</i>	_____
	<i>(Printed or Typed Name)</i>		<i>(Printed or Typed Name)</i>
{	_____	{	_____
	<i>(Signature and Date)</i>		<i>(Signature and Date)</i>

**CORPORATION SIGNATURE PAGE**

(To be used when the bidder is a corporation.)

SHEET FB-C-1

THE BIDDER CERTIFIES THAT THE BIDDER IS:

- A corporation doing business in its own name
- A corporation doing business under a fictitious or assumed name  
(Complete Corporation Fictitious Name Disclosure FB-C-2)

SIGNED, SEALED AND DELIVERED

this \_\_\_\_\_ day of \_\_\_\_\_ 20 \_\_\_\_\_.

*(CORPORATE  
SEAL)*

\_\_\_\_\_  
*(Corporate Name)*

\_\_\_\_\_  
*(Printed or Typed Name)*

\_\_\_\_\_  
*(Printed or Typed Name)*

*Witness*

{

*President*

*V.P. \*\**

{

\_\_\_\_\_  
*(Signature and Date)*

\_\_\_\_\_  
*(Signature and Date)*

\_\_\_\_\_  
*(Corporate Title)*

\_\_\_\_\_  
*(Corporate Title)*

\*\* If the bidder is a corporation, the Bid and the Contract must be executed in the Corporation's correct corporate name by its President or Vice President and attested to by its Secretary or Assistant Secretary or Treasurer or Assistant Treasurer, and the Certification of Corporate Principal (Doc. 00625) must be executed by the Secretary or Assistant Secretary.

**CORPORATION FICTITIOUS NAME DISCLOSURE**  
*(To be used when the Bidder is a corporation doing business under a fictitious or assumed name.)*

SHEET FB-C-2

\_\_\_\_\_ is a corporation trading under a fictitious or  
*(Corporation's Name)*

assumed name of \_\_\_\_\_ and  **has**  **has not** registered under  
*(Fictitious or Assumed Name Used as Bidder's Name) (Check one)*

the Fictitious Names Act of Pennsylvania, namely the Act of May 24, 1945, P.L.967, as amended, 54 P.S. sec. 281.1 et seq.

<i>Witness</i>	_____		_____
	<i>(Printed or Typed Name)</i>	<i>President</i>	<i>(Printed or Typed Name)</i>
{		<i>V.P. **</i>	{
	_____		_____
	<i>(Signature and Date)</i>		<i>(Signature and Date)</i>

\*\* If the bidder is a corporation, the Bid and the Contract must be executed in the Corporation's correct corporate name by its President or Vice President and attested to by its Secretary or Assistant Secretary or Treasurer or Assistant Treasurer, and the Certification of Corporate Principal (Doc. 00625) must be executed by the Secretary or Assistant Secretary.

**CORPORATION CERTIFICATE**  
*(To be used when the bidder is a corporation)*

SHEET FB-C-3

\_\_\_\_\_ is a corporation organized and existing  
*(Corporate name used as Bidder name)*

under the laws of the state of \_\_\_\_\_ with its principal place of business at:

\_\_\_\_\_, \_\_\_\_\_, \_\_\_\_\_  
*(Street Address) (City) (State)*

and, if a non-Pennsylvania corporation  **has**  **has not** *(check one)* been granted a certificate of authority to do business in Pennsylvania as required by the Pennsylvania Business Corporation Law, approved May 5, 1933, P.L. 364, as amended, 15 P.S. sec.2005 et seq.

I, \_\_\_\_\_, certify that I am the  **Secretary**  **Assistant Secretary** of the  
*(check one)*  
Corporation named a Bidder herein; that \_\_\_\_\_ who signed  
this Bid on behalf of the Corporation was then \_\_\_\_\_ of said Corporation that  
*(President/V.P.) \*\**

I know his signature and his signature thereto is genuine; and that said Bid was duly signed, sealed and attested in behalf of said Corporation by authority of its governing body.

*(CORPORATE  
SEAL)*

\_\_\_\_\_  
*(Signature and Date)*

\*\* If the bidder is a corporation, the Bid and the Contract must be executed in the Corporation's correct corporate name by its President or Vice President and its Secretary or Assistant Secretary or Treasurer or Assistant Treasurer, and the above Certificate must be executed by the Secretary or Assistant Secretary

**Attachment G – Form of Bid - G 00311-1(r1) - 9(r1)**

Allies & Ross Management and Development Corporation  
IFB#2023-40 –G-E-P-M  
New Construction of Northview Midrise



**Northview Midrise AMP PA001000009**

**ARMDC PROJECT No. 2020-40**

**FORM OF BID**

**GENERAL CONSTRUCTION**

Contract No.: **2023-40**

TO: Allies & Ross Management  
And Development Corporation  
*(Hereinafter called the "ARMDC")*  
100 Ross Street, 2nd Floor  
Pittsburgh, PA 15219

BIDDER: \_\_\_\_\_  
*(Bidder Name)*  
\_\_\_\_\_  
*(Business Address)*  
\_\_\_\_\_  
*(Telephone)*

1. The undersigned Bidder, having visited the site, having become familiar with local conditions affecting the cost of the work, **including all City of Pittsburgh current code requirements**, and having become familiar with the Invitation for Bids (the IFB) issued by ARMDC, which consists of the following:

- Project Manual, dated **December 18, 2023** containing Bidding Requirements, Contract Forms, Conditions of the Contract, Specifications and Project Drawings, dated **December 3, 2023**
- Addenda (if any) as enumerated in this Form of Bid

hereby proposes to provide all supervision, technical personnel, labor, materials, machinery, tools, appurtenances, equipment and services required to construct and complete the Plumbing Construction, as described in Document 00310 "Scope of Work for General Construction" and as indicated in the Drawings and the Specifications, for the following Firm Fixed Price:

\_\_\_\_\_ Dollars (\$ \_\_\_\_\_)  
*(Insert Bid Price in words)* *(Insert Bid Price in Figures)*

**The Bidder shall include in its Base Bid above the following Alternate items: To the extent necessary, ARMDC will determine the application of the Alternates in accordance with Clause 8 of the Instructions to Bidders (HUD 5369).**

**A. Deduct Alternative No. 001, No. 2: Exterior Lap Siding Pricing\*** \_\_\_\_\_  
*(Insert Price in Figures)*

\*Unvented Cementitious Horizontal Lap Siding, 6.25" width, as specified in Section 07 46 46 "Fiber Cement Siding."

**A. Deduct Alternative No. 001, No. 3: Exterior Lap Siding Pricing\*** \_\_\_\_\_  
*(Insert Price in Figures)*

\*Vented Vinyl Horizontal Lap Siding, 6" width, as specified in Section 07 46 33 "Plastic Siding."

**A. Deduct Alternative No. 001, No. 4: Exterior Lap Siding Pricing\***

\_\_\_\_\_  
(Insert Price in Figures)

\*Unvented Vinyl Horizontal Lap Siding, 6” width, as specified in Section 07 46 33 “Plastic Siding.”

**B. Deduct Alternative No. 002: Kitchen Countertops. No. 2 Pricing\***

\_\_\_\_\_  
(Insert Price in Figures)

\*Solid Surface Countertops as specified in Section 06 61 16 “Solid Surfacing Fabrications.”

**B. Deduct Alternative No. 002: Kitchen Countertops. No. 2 Pricing\***

\_\_\_\_\_  
(Insert Price in Figures)

\*Plastic Laminate Countertops as specified in Section 12 36 23.13 “Plastic-Laminate-Clad Countertops.”

**C. Deduct Alternative No. 003: ADA Slide-In Range. No. 2 Pricing\***

\_\_\_\_\_  
(Insert Price in Figures)

\*36” Height ADA Slide-In Range with Oven as specified in Section 11 30 13 “Residential Appliances.”

**D. Deduct Alternative No. 004: ADA Slide-In Range. No. 2 Pricing\***

\_\_\_\_\_  
(Insert Price in Figures)

\*Pre-Hung Hollow Core Wood Doors in Wood frame as specified in Section 08 14 16 “Flush Wood Doors.”

2. Bid security [ ] is [ ] is not submitted with this bid.  
(Check one)

Bid Security is in amount of:

\_\_\_\_\_ % of the bid OR \_\_\_\_\_ Dollars (\$ \_\_\_\_\_)

Bid Security is in the form of:

- [ ] Certified Check                      [ ] Bank Draft  
[ ] U.S. Govt. Bond                      [ ] Bid Bond (Document 00410)

3. The Bidder hereby acknowledges receipt of the following Addenda, if any, as issued by ARMDC:

Total number of Addenda \_\_\_\_\_ (if none, so state)

Addendum No. \_\_\_\_\_ dated \_\_\_\_\_                      Addendum No. \_\_\_\_\_ dated \_\_\_\_\_

Addendum No. \_\_\_\_\_ dated \_\_\_\_\_                      Addendum No. \_\_\_\_\_ dated \_\_\_\_\_

Addendum No. \_\_\_\_\_ dated \_\_\_\_\_                      Addendum No. \_\_\_\_\_ dated \_\_\_\_\_

Addendum No. \_\_\_\_\_ dated \_\_\_\_\_                      Addendum No. \_\_\_\_\_ dated \_\_\_\_\_

Addendum No. \_\_\_\_\_ dated \_\_\_\_\_                      Addendum No. \_\_\_\_\_ dated \_\_\_\_\_

Addendum No. \_\_\_\_\_ dated \_\_\_\_\_                      Addendum No. \_\_\_\_\_ dated \_\_\_\_\_

4. The Bidder attached hereto Special Provisions (Document 00021);
5. The Bidder attaches hereto the Statement of Bidder's Qualifications (Document 00420);
6. The Bidder attaches hereto the Section 3 Form (Document 00433), Bidder's MBE/WBE Solicitation and Commitment Record (Document 00434), and Previous Related Experience (Document 00436);
7. The Bidder attaches hereto the completed Request for Manpower Plan (Document 00435);
8. Special Provisions – Notice to All Prospective Bidder (Document 00437);
9. The Bidder attaches hereto the Bidder's Representations, Certifications and Other Statements of Bidders (Document HUD 5369-A), Previous Participation Certificate (Document (HUD2530);
10. The Bidder attaches hereto the completed Form of Agreement (Document 00500).

**PROPRIETORSHIP SIGNATURE PAGE**

(To be used when the Bidder is an individual doing business as a Sole Proprietorship.)

THE BIDDER CERTIFIES THAT THE BIDDER IS:

- An individual doing business in his/her own name
- An individual doing business under a fictitious or assumed name  
*(Complete Proprietorship Fictitious Name Disclosure below)*

SIGNED, SEALED AND DELIVERED

this \_\_\_\_\_ day of \_\_\_\_\_ 20\_\_\_\_\_.

	_____		_____
	<i>(Printed or Typed Name)</i>		<i>(Printed or Typed Name)</i>
<i>Witness</i>	{	<i>Principal</i>	{
	_____		_____
	<i>(Signature and Date)</i>		<i>(Signature and Date)</i>

**PROPRIETORSHIP FICTITIOUS NAME DISCLOSURE**

*(To be used when the Bidder is an individual doing business under a fictitious or assumed name.)*

\_\_\_\_\_ is an individual trading under a fictitious or  
*(Proprietor's Name)*

assumed name of \_\_\_\_\_ and  has  has not registered under  
*(Fictitious or Assumed Name Used as Bidder's Name)* *(Check one)*

the Fictitious Names Act of Pennsylvania, namely the Act of May 24, 1945,P.L.967, as amended, 54 P.S.sec.281.1 et seq.

	_____		_____
	<i>(Printed or Typed Name)</i>		<i>(Printed or Typed Name)</i>
<i>Witness</i>	{	<i>Principal</i>	{
	_____		_____
	<i>(Signature and Date)</i>		<i>(Signature and Date)</i>

**PARTNERSHIP SIGNATURE PAGE**

(To be used when the Bidder is an individual doing business as a Partnership.)

THE BIDDER CERTIFIES THAT THE BIDDER IS:

- A General Partnership (Attach completed Sheet FB-P-3)
  - Doing business under Partnership Name
  - Doing business under a fictitious or assumed name  
(Complete Partnership Fictitious Name Disclosure Sheet FB-P-2)
  
- A Limited Partnership (Attach completed Sheet FB-P-3)
  - Doing business under Partnership Name
  - Doing business under a fictitious or assumed name  
(Complete Partnership Fictitious Name Disclosure Sheet FB-P-2)

SIGNED, SEALED AND DELIVERED

this \_\_\_\_\_ day of \_\_\_\_\_ 20 \_\_\_\_\_.

<i>Witness</i>	<i>(Printed or Typed Name)</i>	<i>Partner *</i>	<i>(Printed or Typed Name)</i>
{			
	<i>(Signature and Date)</i>		<i>(Signature and Date)</i>

<i>Witness</i>	<i>(Printed or Typed Name)</i>	<i>Partner *</i>	<i>(Printed or Typed Name)</i>
{			
	<i>(Signature and Date)</i>		<i>(Signature and Date)</i>

\* If the Bidder is a partnership, the Bid and Contract must be signed in the name of the partnership by at least two general partners, and the names and addresses of all the partners must be listed on the certificate on Sheet FB-P-3.

**PARTNERSHIP FICTITIOUS NAME DISCLOSURE**

SHEET FB-P-2

*(To be used when the Bidder is a partnership doing business under a fictitious or assumed name.)*

\_\_\_\_\_ is a partnership trading under a fictitious or  
*(Partnership's Name)*

assumed name of \_\_\_\_\_ and  **has**  **has not** registered under  
*(Fictitious or Assumed Name Used as Bidder's Name) (Check one)*

the Fictitious Names Act of Pennsylvania, namely the Act of May 24, 1945,P.L.967, as amended, 54 P.S.sec.281.1 et seq.

<i>Witness</i>	_____ <i>(Printed or Typed Name)</i>	<i>Partner*</i>	_____ <i>(Printed or Typed Name)</i>
{			
	_____ <i>(Signature and Date)</i>		_____ <i>(Signature and Date)</i>

**PARTNERSHIP CERTIFICATE**

(To be used when the Bidder is a partnership.)

I, as partner of \_\_\_\_\_,  
*(Name of Partnership)*

certify that the following are the names and addresses of all the partners of said partnership.

Name: \_\_\_\_\_ Name: \_\_\_\_\_

Address: \_\_\_\_\_ Address: \_\_\_\_\_

City: \_\_\_\_\_ City: \_\_\_\_\_

Name: \_\_\_\_\_ Name: \_\_\_\_\_

Address: \_\_\_\_\_ Address: \_\_\_\_\_

City: \_\_\_\_\_ City: \_\_\_\_\_

Name: \_\_\_\_\_ Name: \_\_\_\_\_

Address: \_\_\_\_\_ Address: \_\_\_\_\_

City: \_\_\_\_\_ City: \_\_\_\_\_

Name: \_\_\_\_\_ Name: \_\_\_\_\_

Address: \_\_\_\_\_ Address: \_\_\_\_\_

City: \_\_\_\_\_ City: \_\_\_\_\_

(Use additional sheets as required.)

<i>Witness</i>	_____ <i>(Printed or Typed Name)</i>	<i>Partner*</i>	_____ <i>(Printed or Typed Name)</i>
{		{	
	_____ <i>(Signature and Date)</i>		_____ <i>(Signature and Date)</i>

**CORPORATION SIGNATURE PAGE**

(To be used when the bidder is a corporation.)

SHEET FB-C-1

THE BIDDER CERTIFIES THAT THE BIDDER IS:

- A corporation doing business in its own name
- A corporation doing business under a fictitious or assumed name  
(Complete Corporation Fictitious Name Disclosure FB-C-2)

SIGNED, SEALED AND DELIVERED

this \_\_\_\_\_ day of \_\_\_\_\_ 20 \_\_\_\_\_.

*(CORPORATE  
SEAL)*

\_\_\_\_\_

*(Corporate Name)*

\_\_\_\_\_

*(Printed or Typed Name)*

\_\_\_\_\_

*(Printed or Typed Name)*

*Witness*

{

*President*

*V.P. \*\**

{

\_\_\_\_\_

*(Signature and Date)*

\_\_\_\_\_

*(Signature and Date)*

\_\_\_\_\_

*(Corporate Title)*

\_\_\_\_\_

*(Corporate Title)*

\*\* If the bidder is a corporation, the Bid and the Contract must be executed in the Corporation's correct corporate name by its President or Vice President and attested to by its Secretary or Assistant Secretary or Treasurer or Assistant Treasurer, and the Certification of Corporate Principal (Doc. 00625) must be executed by the Secretary or Assistant Secretary.



**CORPORATION FICTITIOUS NAME DISCLOSURE**

*(To be used when the Bidder is a corporation doing business under a fictitious or assumed name.)*

\_\_\_\_\_ is a corporation trading under a fictitious or  
*(Corporation's Name)*

assumed name of \_\_\_\_\_ and  **has**  **has not** registered under  
*(Fictitious or Assumed Name Used as Bidder's Name)* *(Check one)*

the Fictitious Names Act of Pennsylvania, namely the Act of May 24, 1945,P.L.967, as amended, 54 P.S.sec.281.1 et seq.

	_____		_____
	<i>(Printed or Typed Name)</i>		<i>(Printed or Typed Name)</i>
<i>Witness</i>		<i>President</i>	
	{	<i>V.P. **</i>	{
	_____		_____
	<i>(Signature and Date)</i>		<i>(Signature and Date)</i>

\*\* If the bidder is a corporation, the Bid and the Contract must be executed in the Corporation's correct corporate name by its President or Vice President and attested to by its Secretary or Assistant Secretary or Treasurer or Assistant Treasurer, and the Certification of Corporate Principal (Doc. 00625) must be executed by the Secretary or Assistant Secretary.

**CORPORATION CERTIFICATE**

SHEET FB-C-3

*(To be used when the bidder is a corporation)*

\_\_\_\_\_ is a corporation organized and existing  
*(Corporate name used as Bidder name)*  
under the laws of the state of \_\_\_\_\_ with its principal place of business at:

\_\_\_\_\_, \_\_\_\_\_, \_\_\_\_\_  
*(Street Address) (City) (State)*

and, if a non-Pennsylvania corporation  **has**  **has not** *(check one)* been granted a certificate of authority to do business in Pennsylvania as required by the Pennsylvania Business Corporation Law, approved May 5, 1933, P.L. 364, as amended, 15 P.S. sec.2005 et seq.

I, \_\_\_\_\_, certify that I am the  **Secretary**  **Assistant Secretary** of the  
*(check one)*

Corporation named a Bidder herein; that \_\_\_\_\_ who signed

this Bid on behalf of the Corporation was then \_\_\_\_\_ of said Corporation that  
*(President/V.P.) \*\**

I know his signature and his signature thereto is genuine; and that said Bid was duly signed, sealed and attested in behalf of said Corporation by authority of its governing body.

*(CORPORATE SEAL)*

\_\_\_\_\_  
*(Signature and Date)*

\*\* If the bidder is a corporation, the Bid and the Contract must be executed in the Corporation's correct corporate name by its President or Vice President and its Secretary or Assistant Secretary or Treasurer or Assistant Treasurer, and the above Certificate must be executed by the Secretary or Assistant Secretary