



# Housing Authority of the City of Pittsburgh

Contracting Officer  
100 Ross Street  
2<sup>nd</sup> Floor Suite 200  
Pittsburgh, PA 15219  
(412) 456-5248  
Fax: (412) 456-5007  
www.hacp.org

November 16, 2012

## Various Upgrades for Morse Gardens High-rise Rebid IFB#600-36-12 G, E, H Rebid

### ADDENDUM NO.2

This addendum issued November 16, 2012 becomes in its entirety a part of the Invitation for Bid IFB#600-35-12 Rebid as is fully set forth herein:

**Item 1:** Q: There are three outside pole lights along 25<sup>th</sup> street (FE1). Are we to demo the existing concrete bases and pour new?

**A:** The E.C. shall demolish the existing poles and bases and provide new poles and bases per detail 2 on drawing E501

**Item 2:** Q: Are we not installing emergency lights in the laundry room?

**A:** Emergency lighting shall be provided in Laundry G-11 per the attached drawings SK-E1.

**Item 3:** Q: What means are there for entering a lift into the atrium to remove the existing track lighting and to install new lights? The height seems to be around 60'. Can you verify the height?

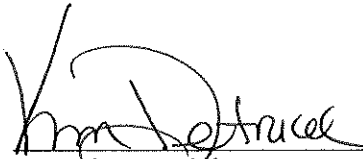
**A:** It is the contractor's responsibility to determine means and methods for performing work. The height of the atrium space is approximately 65' to the ridge beam.

**Item 4:** Q: Which prime contractor is to purchase the electric fireplace?

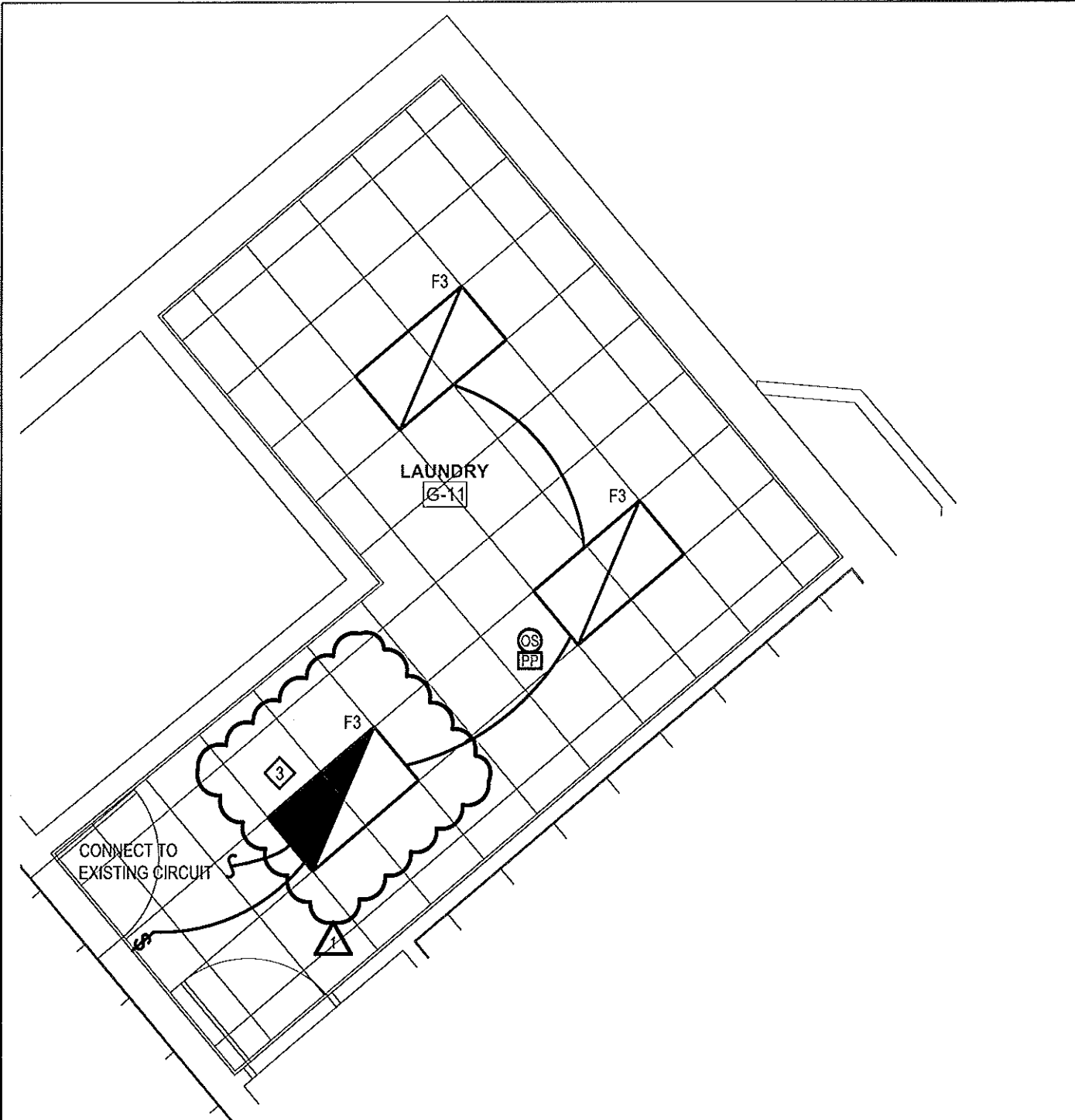
**A:** Per drawing A605 "Electric fireplace by G.C. The E.C. to provide final hookup."

**Item 5:** The bid due date, time and location, remains unchanged at November 21, 2012 at 11:00 am at the HACP Procurement Dept., 100 Ross St. 2<sup>nd</sup> Floor, Suite 200, Pittsburgh, PA 15219.

**END OF ADDENDUM NO. 2**

  
\_\_\_\_\_  
Mr. Kim Detrick  
Procurement Director  
Contracting Officer

11-16-2012  
Date



**2** ELECTRICAL PARTIAL GROUND FLOOR PLAN  
 SCALE: 1/4" = 1'-0"



IMPROVEMENTS AT MORSE GARDENS  
 PITTSBURGH, PA

DRAWING TITLE: ELECTRICAL PARTIAL GROUND FLOOR PLAN

SCALE: AS NOTED	DRAWN BY: JDF	DATE: 11-16-12	REFERENCE DRAWING: E101	SK #: SK-E1
--------------------	------------------	-------------------	----------------------------	----------------