



# Housing Authority of the City of Pittsburgh

Contracting Officer  
100 Ross Street  
2<sup>nd</sup> Floor Suite 200  
Pittsburgh, PA 15219  
(412) 456-5248  
Fax: (412) 456-5007  
www.hacp.org

**November 21, 2012**

**Phase II Roof Replacements at the Northview Heights Family  
Community  
IFB#600-45-12**

**ADDENDUM NO. 2**

This addendum issued November 21, 2012 becomes in its entirety a part of the Invitation to Bid IFB#600-45-12 as is fully set forth herein:

**Item 1:** Project Manual Section 31 20 00 "Earth Moving" 4.1.F.2, DEFINITIONS, revise to read:

- a. For this project, a Power Shovel is defined as a Caterpillar E200B Hydraulic Excavator or equal.
- b. Site Rock: Solid mineral material with a volume in excess of 1/3 cubic yard or solid material that cannot be removed with a 3/4 cubic yard capacity power shovel without drilling.
- c. Trench Rock: Solid mineral material with a volume in excess of 1/6 cubic yard or solid material that cannot be removed with a 1/4 cubic yard capacity power shovel without drilling.
- d. Rock: Solid mineral material of a size that cannot be removed with a 1/4 cubic yard capacity power shovel.

**Item 2:** Replace portion of drawing 2/C1.1 with the attached revised drawing vignette C1.1 dated 20 November 2012.

**Item 3:** The Bid due date, time and location remain unchanged at November 27, 2012 10:00 AM. at the HACP Procurement Dept., 100 Ross St. 2<sup>nd</sup> Floor, Suite 200, Pittsburgh, PA 15219.

**END OF ADDENDUM NO. 2**



Mr. Kim Detrick  
Procurement Director/Contracting Officer

11-21-2012

Date

1. Take special precautions as required, preserving condition and integrity of any existing structures.
2. Excavate subsoil required to accommodate building foundations, slabs-on-grade, and paving.
3. Grade on top perimeter of all excavations to prevent surface water from draining into excavation.
4. Use precaution during final excavation to subgrade level to prevent disturbance and remolding of subgrade material. Hand trim excavation as required. Remove loose material.
5. Remove lumped subsoil, boulders, and rock up to 1/3 cubic yard measured by volume.
6. Notify the Architect/Engineer's Field Representative of unexpected subsurface conditions or hazardous materials encountered, and discontinue affected work in area until notified to resume work.
7. Correct unauthorized excavation to bring it to original condition or better.
8. Correct areas over-excavated by error in accordance with Section 3.1.6.
9. It is the Contractor's responsibility to comply with applicable Local, State and Federal regulations on excavation, shoring, and trenching.

F. Rock Excavation

1. PRICE AND PAYMENT PROCEDURES

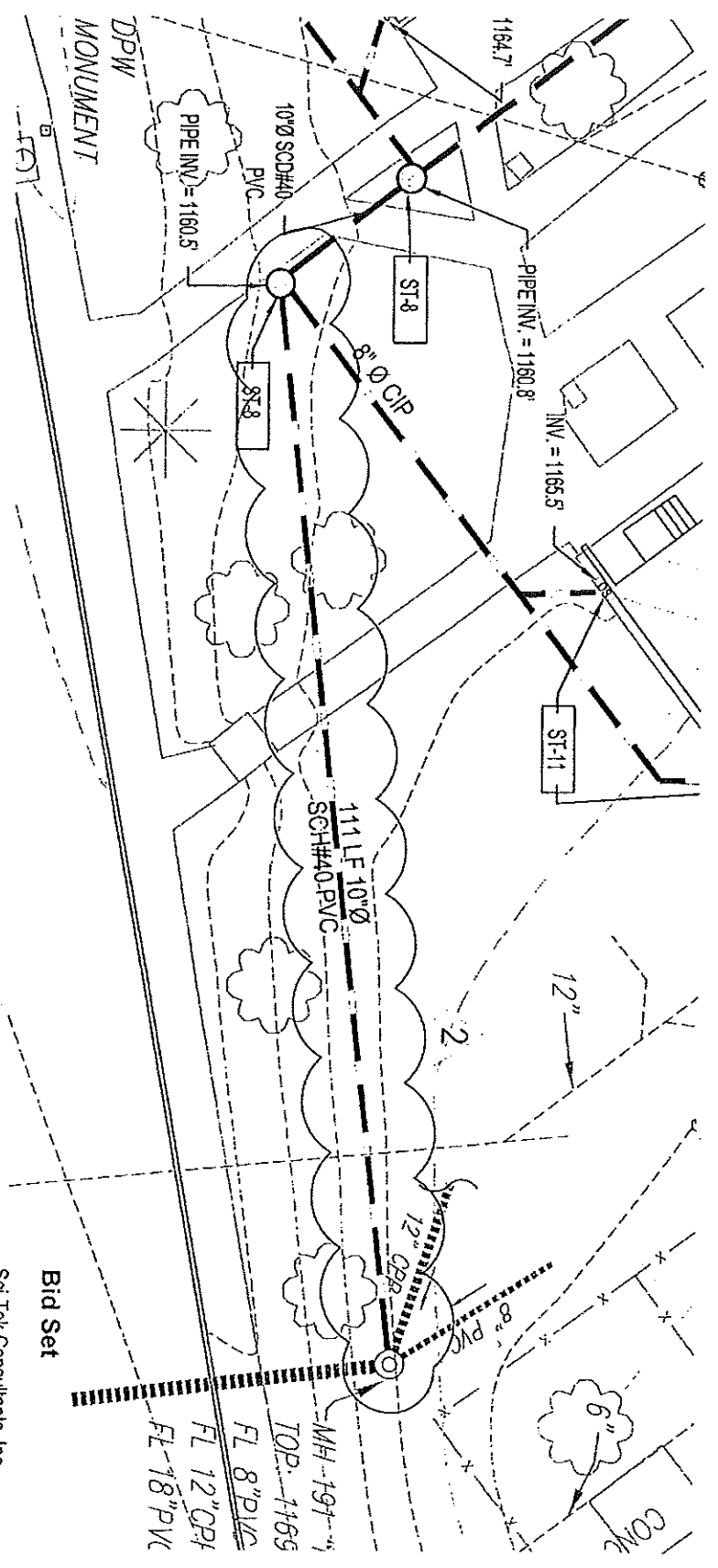
- a. See Section 01 22 00 - Unit Prices, for additional unit price requirements.
- b. Site Rock Removal: By the cubic yard measured before disintegration. Includes preparation of rock for removal, removal from position, loading and removing from site. For over excavation, payment will not be made for over excavated work nor for replacement materials.
- c. Trench Rock Removal: By the cubic yard measured before disintegration. Includes preparation of rock for removal, removal from position, loading and removing from site. For over excavation, payment will not be made for over excavated work nor for replacement materials.

2. DEFINITIONS

- a. For this project, a Power Shovel is defined as a Caterpillar E200B Hydraulic Excavator or equal.
- b. Site Rock: Solid mineral material with a volume in excess of 1/3 cubic yard or solid material that cannot be removed with a 3/4 cubic yard capacity power shovel without drilling.
- c. Trench Rock: Solid mineral material with a volume in excess of 1/6 cubic yard or solid material that cannot be removed with a 1/4 cubic yard capacity power shovel without drilling.
- d. Rock: Solid mineral material of a size that cannot be removed with a 1/4 cubic yard capacity power shovel.

3. ROCK REMOVAL

- a. Excavate and remove rock by mechanical methods only; use of explosives is prohibited.



**Bid Set**

Sci-Tek Consultants, Inc.  
 665 Red Rock, Suite 203  
 Raleigh, Pennsylvania 15235  
 412.371.4460  
 www.scitekconsultants.com

3115 Laurel Lane  
 Pittsburgh, PA 15219  
 412.242.8009

Northview Heights Estates  
 Roof Replacement  
 530 1/2k. Pleasant Road, Raleigh 15214

28 Oct 2012  
 REV 20 NOV 2012  
 modifies  
 sheet:  
 STORMWATER PLAN  
 Scale: As Noted