



1



2



3



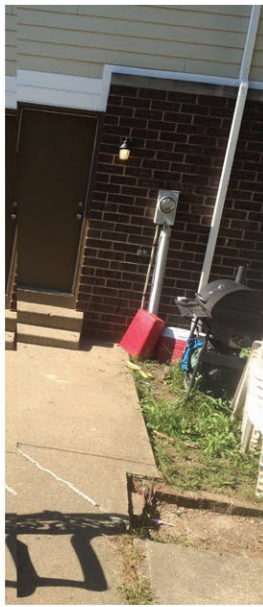
4



5



6



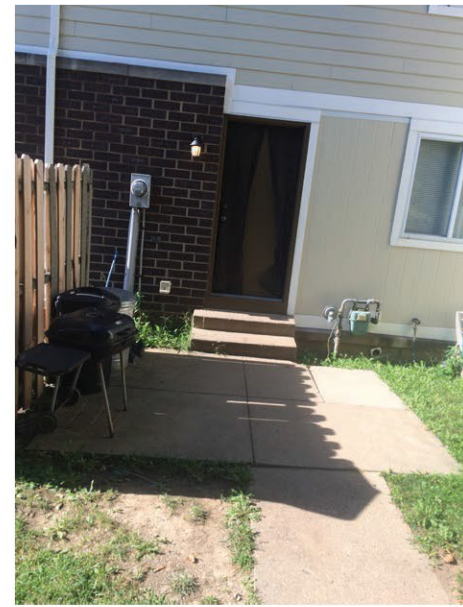
7



8



9



10



11



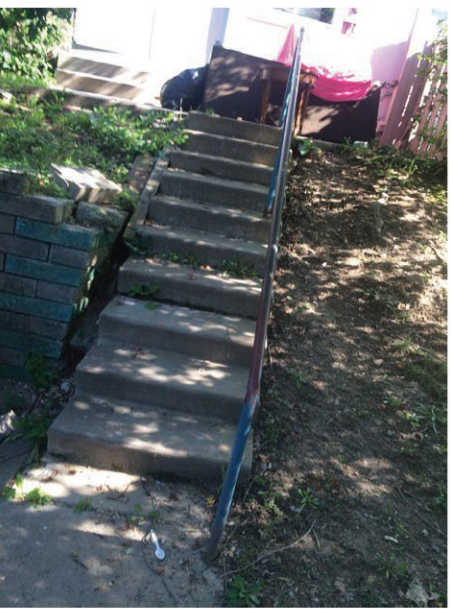
12



14

NO PHOTO AVAILABLE

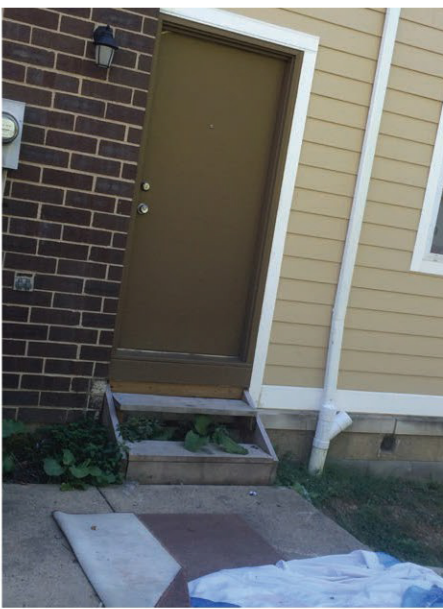
15



16



17



18



20



21



22



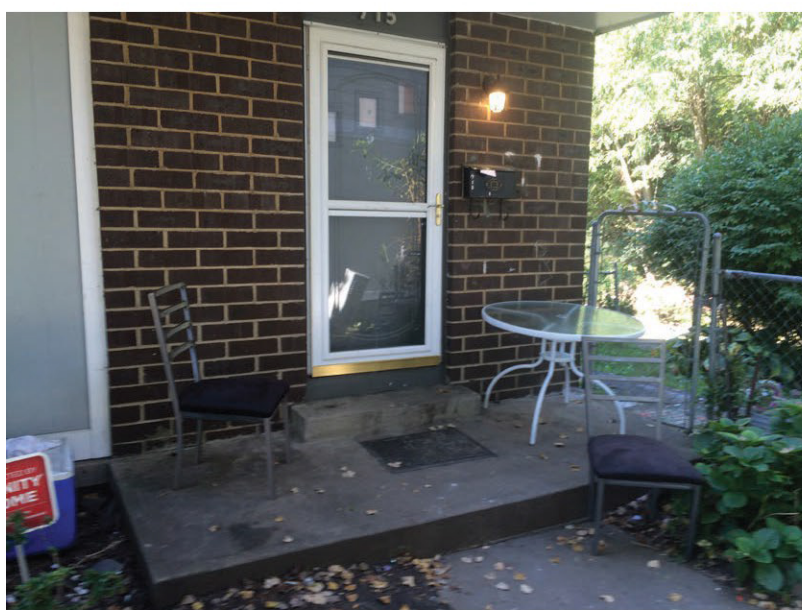
23



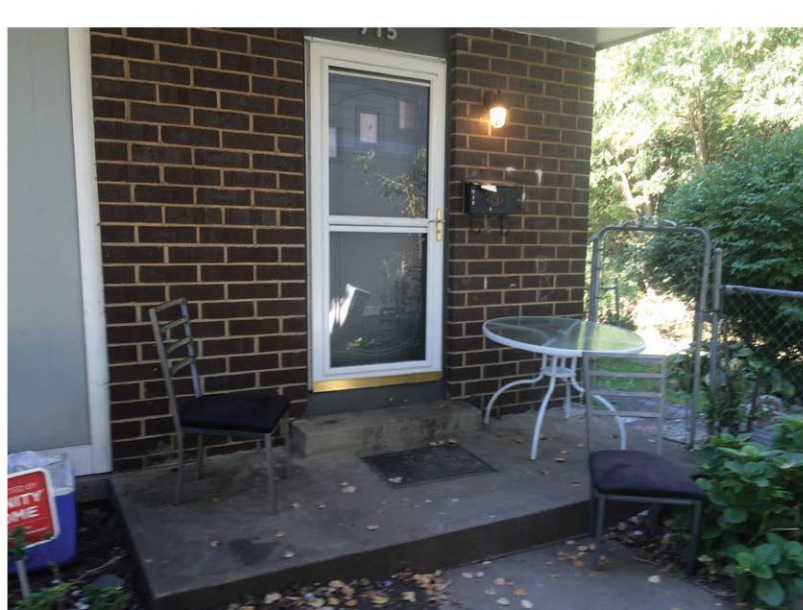
24



25

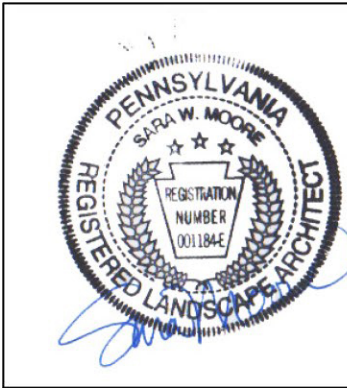


26



27

**General Notes:**  
Base plans and information has been provided by the owner. Prescribed site improvements by Moore Design Associates are shown on Owner supplied base plans. Moore Design Associates does not guarantee or warrant the exact condition, location, extent, quantities, or dimensions of the site conditions or the improvements shown. The contractor is responsible for verifying the conditions documented in the photographs. During Construction the residences will be occupied. The Contractor is responsible for maintaining access to the units at all times during construction.



Renaissance 3 Architects, P.C.  
48 South 14th Street  
Pittsburgh, PA 15203  
Phone: 412-431-2480  
Fax: 412-431-2670  
www.r3a.com

Design  
Technology  
Sustainability

© COPYRIGHT 2017 R3A

CONSULTANT:  
  
www.mooredesignassociates.com  
1300 PENNSYLVANIA AVE., SUITE 1000, PITTSBURGH, PA 15203

Allies & Ross  
Management and  
Development  
Corporation

Task Order  
Contract No. 33 -  
Glen Hazel Rental  
Assistance  
Demonstration  
(RAD)  
945 Roselle Ct  
Pittsburgh, PA 15207

CONSTRUCTION  
DOCUMENTS

ISSUED: October 27, 2017

Site Image  
References

R3A PROJECT # 15074B

L-201A