



Allies & Ross  
Management and Development Corporation  
200 Ross Street  
Pittsburgh, PA 15219

412-456-5000

**November 29, 2017**

**Allies & Ross Management and Development Company  
IFB#2017-22 –E-P-H**

**OCCUPIED RENOVATION OF GLEN HAZEL (BERNICE CRAWLEY)  
HIGHRISE (AMP-33) / GLEN HAZEL FAMILY COMMUNITY (AMP-32)**

**ADDENDUM NO. 1**

This addendum issued November 29, 2017 becomes in its entirety a part of the Request for Proposals IFB#2017-22 as is fully set forth herein:

**Item 1: Q:** Are the bids due to the Owner (100 Ross St., 2<sup>nd</sup> Floor, Suite 200) or is ARMDC a separate company? If so, can you explain?

**A:** Bids are due to ARMDC – Development, LLC c/o Housing Authority of the City of Pittsburgh (“HACP”) , Procurement Department, 100 Ross Street – Suite 200 (2<sup>nd</sup> Floor), Pittsburgh, PA 15219.

**Item 2: Q:** On the Plumbing Drawings under General Notes the following note appears under varying numbers: “REMOVE SHOWER FAUCET AND SHOWER HEAD AS G.C. REMOVES AND INSTALLS TUB SURROUND. PROVIDE MOEN HILLIARD SINGLE HANDLE/TUB SHOWER VALVE, SHOWER FLEX HOSE AND SHOWER HEAD”. Are they installing showers with the flex hose in all locations that are being replaced? If so, the specification for the shower fixture is not in the current spec released. Please advise on which type of shower fixture should be used.

**A:** No, only UFAS units are to receive a flex hose shower faucet. The UFAS units are listed on G-101 and G-102.

**All non-UFAS units to have a general note reading “REMOVE SHOWER FAUCET AND SHOWER HEAD AS G.C. REMOVES AND INSTALLS TUB SURROUND. PROVIDE MOEN HILLIARD SINGLE HANDLE/TUB SHOWER VALVE, TUB NOZZLE AND SHOWER HEAD, MODEL 82537.”**

**For all UFAS units, shown on drawings P-106—General Note #5; P-116—General Note #4; P-118—General Note #5; and P-119--General Note #6, to replace the general note with, “REMOVE SHOWER FAUCET AND SHOWER HEAD AS G.C. REMOVES AND INSTALLS TUB SURROUND. PROVIDE MOEN HILLIARD SINGLE HANDLE/TUB SHOWER VALVE, TUB NOZZLE AND SHOWER HEAD, MODEL 82537, WITH**

**HAND-HELD SHOWER, MODEL 3636EP, AND TRANSFER VALVE, MODEL 3372, WITH TRIM, MODEL T1471 AND TWIN ELL, MODEL 128284."**

**Item 3:**       **Q:**     Will any information be provided in regards to electrical alternate 1, Fire Alarm Smokes and Strobe? There are some smokes shown on the drawings, but no information on what will need to be added, were the existing panels are, etc. for the existing fire alarm system.

**A:**     The information available is an "As Built" Dwg E-107, dated 10-31-2018. This drawing is attached "For Reference Only". It shows smoke detectors in all apartments with additional details for UFAS units in the building. See attached Dwg E-107 herein.

**Item 4:**       **Q:**     Are the original structural/architectural drawings available to verify the construction types at the high rise?

**A:**     Original architectural plans can be viewed in person at HACP Procurement Dept., 100 Ross St. 2nd Floor, Suite 200, Pittsburgh, PA 15219 between 9:00 a.m. – 4:00 p.m., Monday through Friday until the Proposal due date and time.

**Item 5:**       **Q:**     Will there be an opportunity to call in to the pre-bid conference via telephone?

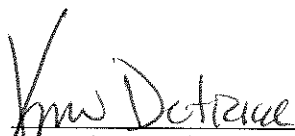
**A:**     No.

**Item 6:**       **Q:**     Will the list of pre-bid conference attendees be posted publically after the meeting?

**A:**     Yes, the pre-bid conference sign-in sheet will be posted to the HACP website.

**Item 7:**       The Proposal due date, time and location remain unchanged at December 8, 2017 at 11:00 a.m., at HACP Procurement Dept., 100 Ross St. 2<sup>nd</sup> Floor, Suite 200, Pittsburgh, PA 15219.

***END OF ADDENDUM NO. 1***

  
\_\_\_\_\_  
Mr. Kim Detrick  
Procurement Director/Contracting Officer

11-29-17  
\_\_\_\_\_  
Date



Allies & Ross  
Management and Development Corporation  
200 Ross Street  
Pittsburgh, PA 15219

412-456-5000

**November 29, 2017**  
**Allies & Ross Management and Development Company**  
**IFB#2017-22 –E-P-H**

**Attachment E-107**



Project Name:	Glenn Hazel Apartments
Project Address:	100 Boulevard of the Allies, New York, NY 10011
Project No.:	100-10011
Project Date:	10/1/2000
Project Status:	Final
Project Owner:	Glenn Hazel Apartments, Inc.
Project Manager:	John Doe
Project Engineer:	Perfidio Welsch
Project Architect:	Perfidio Welsch Architects
Project Designer:	Perfidio Welsch Architects
Project Draftsman:	Perfidio Welsch Architects
Project Checker:	Perfidio Welsch Architects
Project Approver:	Perfidio Welsch Architects
Project Reviewer:	Perfidio Welsch Architects
Project Consultant:	Perfidio Welsch Architects
Project Specialist:	Perfidio Welsch Architects
Project Coordinator:	Perfidio Welsch Architects
Project Assistant:	Perfidio Welsch Architects
Project Secretary:	Perfidio Welsch Architects
Project Receptionist:	Perfidio Welsch Architects
Project Janitor:	Perfidio Welsch Architects
Project Security:	Perfidio Welsch Architects
Project Maintenance:	Perfidio Welsch Architects
Project Cleaning:	Perfidio Welsch Architects
Project Landscaping:	Perfidio Welsch Architects
Project Pest Control:	Perfidio Welsch Architects
Project Fire Protection:	Perfidio Welsch Architects
Project Life Safety:	Perfidio Welsch Architects
Project Accessibility:	Perfidio Welsch Architects
Project Energy:	Perfidio Welsch Architects
Project Water:	Perfidio Welsch Architects
Project Sewer:	Perfidio Welsch Architects
Project Gas:	Perfidio Welsch Architects
Project Telecommunications:	Perfidio Welsch Architects
Project Transportation:	Perfidio Welsch Architects
Project Environmental:	Perfidio Welsch Architects
Project Historical:	Perfidio Welsch Architects
Project Archaeological:	Perfidio Welsch Architects
Project Anthropological:	Perfidio Welsch Architects
Project Ethnographic:	Perfidio Welsch Architects
Project Linguistic:	Perfidio Welsch Architects
Project Archaeological:	Perfidio Welsch Architects
Project Anthropological:	Perfidio Welsch Architects
Project Ethnographic:	Perfidio Welsch Architects
Project Linguistic:	Perfidio Welsch Architects

**WARNING**  
The design of this system is based on the information provided by others. The designer assumes no responsibility for the accuracy or completeness of this information. The user of this information assumes full responsibility for its use. The designer is not responsible for any errors or omissions in this document. The user of this information assumes full responsibility for its use. The designer is not responsible for any errors or omissions in this document. The user of this information assumes full responsibility for its use.

**RECORD DRAWINGS**  
UNIT: 100-10011

Project Name:	Glenn Hazel Apartments
Project Address:	100 Boulevard of the Allies, New York, NY 10011
Project No.:	100-10011
Project Date:	10/1/2000
Project Status:	Final
Project Owner:	Glenn Hazel Apartments, Inc.
Project Manager:	John Doe
Project Engineer:	Perfidio Welsch
Project Architect:	Perfidio Welsch Architects
Project Designer:	Perfidio Welsch Architects
Project Draftsman:	Perfidio Welsch Architects
Project Checker:	Perfidio Welsch Architects
Project Approver:	Perfidio Welsch Architects
Project Reviewer:	Perfidio Welsch Architects
Project Consultant:	Perfidio Welsch Architects
Project Specialist:	Perfidio Welsch Architects
Project Coordinator:	Perfidio Welsch Architects
Project Assistant:	Perfidio Welsch Architects
Project Secretary:	Perfidio Welsch Architects
Project Receptionist:	Perfidio Welsch Architects
Project Janitor:	Perfidio Welsch Architects
Project Security:	Perfidio Welsch Architects
Project Maintenance:	Perfidio Welsch Architects
Project Cleaning:	Perfidio Welsch Architects
Project Landscaping:	Perfidio Welsch Architects
Project Pest Control:	Perfidio Welsch Architects
Project Fire Protection:	Perfidio Welsch Architects
Project Life Safety:	Perfidio Welsch Architects
Project Accessibility:	Perfidio Welsch Architects
Project Energy:	Perfidio Welsch Architects
Project Water:	Perfidio Welsch Architects
Project Sewer:	Perfidio Welsch Architects
Project Gas:	Perfidio Welsch Architects
Project Telecommunications:	Perfidio Welsch Architects
Project Transportation:	Perfidio Welsch Architects
Project Environmental:	Perfidio Welsch Architects
Project Historical:	Perfidio Welsch Architects
Project Archaeological:	Perfidio Welsch Architects
Project Anthropological:	Perfidio Welsch Architects
Project Ethnographic:	Perfidio Welsch Architects
Project Linguistic:	Perfidio Welsch Architects
Project Archaeological:	Perfidio Welsch Architects
Project Anthropological:	Perfidio Welsch Architects
Project Ethnographic:	Perfidio Welsch Architects
Project Linguistic:	Perfidio Welsch Architects

Glenn Hazel  
Apartments  
100 Boulevard of the Allies  
New York, NY 10011

Fire Alarm Ring  
Unit: 100-10011  
Date: 10/1/2000

E-107

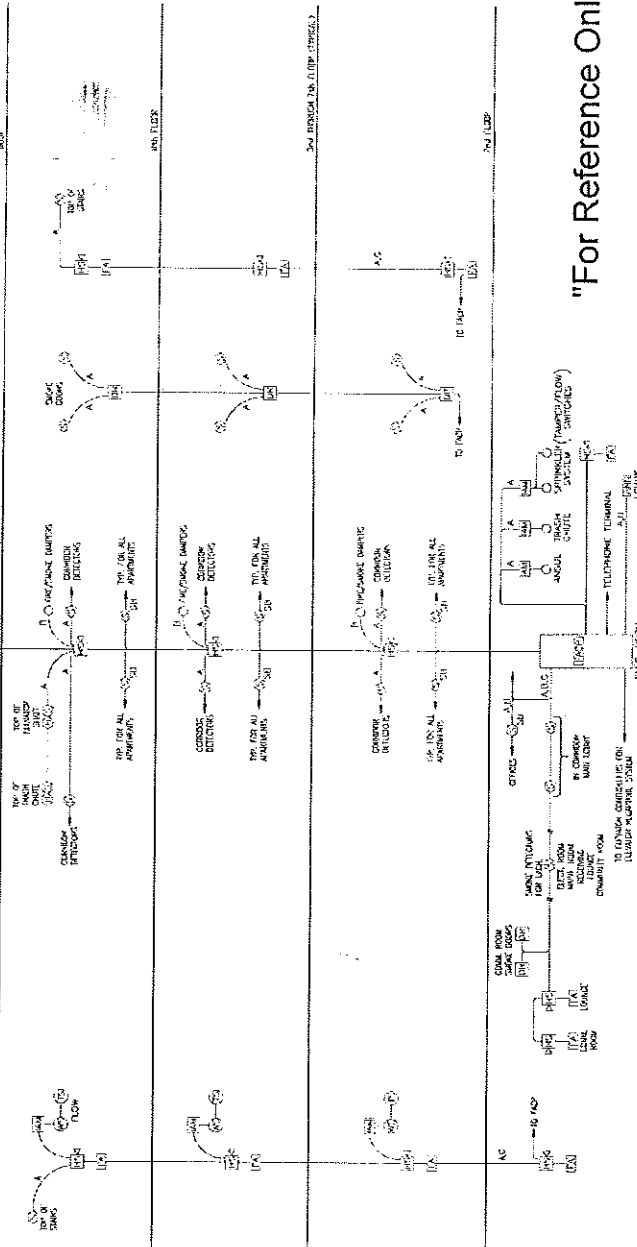
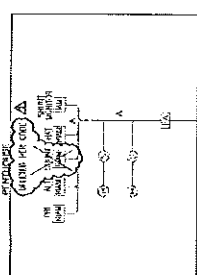


EMERGENCY CALL POWER SUPPLY

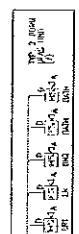


EMERGENCY CALL POWER SUPPLY

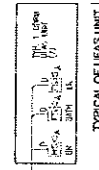
NOTES:  
1. REFER TO THE PLAN TO THE NEW ALARM RINGING AND ALARM OF THE ALARM RINGING.  
2. THE ALARM RINGING IS TO BE PROVIDED BY THE ALARM RINGING.  
3. THE ALARM RINGING IS TO BE PROVIDED BY THE ALARM RINGING.  
4. THE ALARM RINGING IS TO BE PROVIDED BY THE ALARM RINGING.  
5. THE ALARM RINGING IS TO BE PROVIDED BY THE ALARM RINGING.



FIRE ALARM RISING DIAGRAM



TYPICAL OF ALARM UNIT



TYPICAL OF ALARM UNIT

Legend:  
A - Alarm  
B - Alarm  
C - Alarm  
D - Alarm  
E - Alarm  
F - Alarm  
G - Alarm  
H - Alarm  
I - Alarm  
J - Alarm  
K - Alarm  
L - Alarm  
M - Alarm  
N - Alarm  
O - Alarm  
P - Alarm  
Q - Alarm  
R - Alarm  
S - Alarm  
T - Alarm  
U - Alarm  
V - Alarm  
W - Alarm  
X - Alarm  
Y - Alarm  
Z - Alarm  
AA - Alarm  
AB - Alarm  
AC - Alarm  
AD - Alarm  
AE - Alarm  
AF - Alarm  
AG - Alarm  
AH - Alarm  
AI - Alarm  
AJ - Alarm  
AK - Alarm  
AL - Alarm  
AM - Alarm  
AN - Alarm  
AO - Alarm  
AP - Alarm  
AQ - Alarm  
AR - Alarm  
AS - Alarm  
AT - Alarm  
AU - Alarm  
AV - Alarm  
AW - Alarm  
AX - Alarm  
AY - Alarm  
AZ - Alarm  
BA - Alarm  
BB - Alarm  
BC - Alarm  
BD - Alarm  
BE - Alarm  
BF - Alarm  
BG - Alarm  
BH - Alarm  
BI - Alarm  
BJ - Alarm  
BK - Alarm  
BL - Alarm  
BM - Alarm  
BN - Alarm  
BO - Alarm  
BP - Alarm  
BQ - Alarm  
BR - Alarm  
BS - Alarm  
BT - Alarm  
BU - Alarm  
BV - Alarm  
BW - Alarm  
BX - Alarm  
BY - Alarm  
BZ - Alarm  
CA - Alarm  
CB - Alarm  
CC - Alarm  
CD - Alarm  
CE - Alarm  
CF - Alarm  
CG - Alarm  
CH - Alarm  
CI - Alarm  
CJ - Alarm  
CK - Alarm  
CL - Alarm  
CM - Alarm  
CN - Alarm  
CO - Alarm  
CP - Alarm  
CQ - Alarm  
CR - Alarm  
CS - Alarm  
CT - Alarm  
CU - Alarm  
CV - Alarm  
CW - Alarm  
CX - Alarm  
CY - Alarm  
CZ - Alarm  
DA - Alarm  
DB - Alarm  
DC - Alarm  
DD - Alarm  
DE - Alarm  
DF - Alarm  
DG - Alarm  
DH - Alarm  
DI - Alarm  
DJ - Alarm  
DK - Alarm  
DL - Alarm  
DM - Alarm  
DN - Alarm  
DO - Alarm  
DP - Alarm  
DQ - Alarm  
DR - Alarm  
DS - Alarm  
DT - Alarm  
DU - Alarm  
DV - Alarm  
DW - Alarm  
DX - Alarm  
DY - Alarm  
DZ - Alarm  
EA - Alarm  
EB - Alarm  
EC - Alarm  
ED - Alarm  
EE - Alarm  
EF - Alarm  
EG - Alarm  
EH - Alarm  
EI - Alarm  
EJ - Alarm  
EK - Alarm  
EL - Alarm  
EM - Alarm  
EN - Alarm  
EO - Alarm  
EP - Alarm  
EQ - Alarm  
ER - Alarm  
ES - Alarm  
ET - Alarm  
EU - Alarm  
EV - Alarm  
EW - Alarm  
EX - Alarm  
EY - Alarm  
EZ - Alarm  
FA - Alarm  
FB - Alarm  
FC - Alarm  
FD - Alarm  
FE - Alarm  
FF - Alarm  
FG - Alarm  
FH - Alarm  
FI - Alarm  
FJ - Alarm  
FK - Alarm  
FL - Alarm  
FM - Alarm  
FN - Alarm  
FO - Alarm  
FP - Alarm  
FQ - Alarm  
FR - Alarm  
FS - Alarm  
FT - Alarm  
FU - Alarm  
FV - Alarm  
FW - Alarm  
FX - Alarm  
FY - Alarm  
FZ - Alarm  
GA - Alarm  
GB - Alarm  
GC - Alarm  
GD - Alarm  
GE - Alarm  
GF - Alarm  
GG - Alarm  
GH - Alarm  
GI - Alarm  
GJ - Alarm  
GK - Alarm  
GL - Alarm  
GM - Alarm  
GN - Alarm  
GO - Alarm  
GP - Alarm  
GQ - Alarm  
GR - Alarm  
GS - Alarm  
GT - Alarm  
GU - Alarm  
GV - Alarm  
GW - Alarm  
GX - Alarm  
GY - Alarm  
GZ - Alarm  
HA - Alarm  
HB - Alarm  
HC - Alarm  
HD - Alarm  
HE - Alarm  
HF - Alarm  
HG - Alarm  
HH - Alarm  
HI - Alarm  
HJ - Alarm  
HK - Alarm  
HL - Alarm  
HM - Alarm  
HN - Alarm  
HO - Alarm  
HP - Alarm  
HQ - Alarm  
HR - Alarm  
HS - Alarm  
HT - Alarm  
HU - Alarm  
HV - Alarm  
HW - Alarm  
HX - Alarm  
HY - Alarm  
HZ - Alarm  
IA - Alarm  
IB - Alarm  
IC - Alarm  
ID - Alarm  
IE - Alarm  
IF - Alarm  
IG - Alarm  
IH - Alarm  
II - Alarm  
IJ - Alarm  
IK - Alarm  
IL - Alarm  
IM - Alarm  
IN - Alarm  
IO - Alarm  
IP - Alarm  
IQ - Alarm  
IR - Alarm  
IS - Alarm  
IT - Alarm  
IU - Alarm  
IV - Alarm  
IW - Alarm  
IX - Alarm  
IY - Alarm  
IZ - Alarm  
JA - Alarm  
JB - Alarm  
JC - Alarm  
JD - Alarm  
JE - Alarm  
JF - Alarm  
JG - Alarm  
JH - Alarm  
JI - Alarm  
JJ - Alarm  
JK - Alarm  
JL - Alarm  
JM - Alarm  
JN - Alarm  
JO - Alarm  
JP - Alarm  
JQ - Alarm  
JR - Alarm  
JS - Alarm  
JT - Alarm  
JU - Alarm  
JV - Alarm  
JW - Alarm  
JX - Alarm  
JY - Alarm  
JZ - Alarm  
KA - Alarm  
KB - Alarm  
KC - Alarm  
KD - Alarm  
KE - Alarm  
KF - Alarm  
KG - Alarm  
KH - Alarm  
KI - Alarm  
KJ - Alarm  
KL - Alarm  
KM - Alarm  
KN - Alarm  
KO - Alarm  
KP - Alarm  
KQ - Alarm  
KR - Alarm  
KS - Alarm  
KT - Alarm  
KU - Alarm  
KV - Alarm  
KW - Alarm  
KX - Alarm  
KY - Alarm  
KZ - Alarm  
LA - Alarm  
LB - Alarm  
LC - Alarm  
LD - Alarm  
LE - Alarm  
LF - Alarm  
LG - Alarm  
LH - Alarm  
LI - Alarm  
LJ - Alarm  
LK - Alarm  
LL - Alarm  
LM - Alarm  
LN - Alarm  
LO - Alarm  
LP - Alarm  
LQ - Alarm  
LR - Alarm  
LS - Alarm  
LT - Alarm  
LU - Alarm  
LV - Alarm  
LW - Alarm  
LX - Alarm  
LY - Alarm  
LZ - Alarm  
MA - Alarm  
MB - Alarm  
MC - Alarm  
MD - Alarm  
ME - Alarm  
MF - Alarm  
MG - Alarm  
MH - Alarm  
MI - Alarm  
MJ - Alarm  
MK - Alarm  
ML - Alarm  
MM - Alarm  
MN - Alarm  
MO - Alarm  
MP - Alarm  
MQ - Alarm  
MR - Alarm  
MS - Alarm  
MT - Alarm  
MU - Alarm  
MV - Alarm  
MW - Alarm  
MX - Alarm  
MY - Alarm  
MZ - Alarm  
NA - Alarm  
NB - Alarm  
NC - Alarm  
ND - Alarm  
NE - Alarm  
NF - Alarm  
NG - Alarm  
NH - Alarm  
NI - Alarm  
NJ - Alarm  
NK - Alarm  
NL - Alarm  
NM - Alarm  
NN - Alarm  
NO - Alarm  
NP - Alarm  
NQ - Alarm  
NR - Alarm  
NS - Alarm  
NT - Alarm  
NU - Alarm  
NV - Alarm  
NW - Alarm  
NX - Alarm  
NY - Alarm  
NZ - Alarm  
OA - Alarm  
OB - Alarm  
OC - Alarm  
OD - Alarm  
OE - Alarm  
OF - Alarm  
OG - Alarm  
OH - Alarm  
OI - Alarm  
OJ - Alarm  
OK - Alarm  
OL - Alarm  
OM - Alarm  
ON - Alarm  
OO - Alarm  
OP - Alarm  
OQ - Alarm  
OR - Alarm  
OS - Alarm  
OT - Alarm  
OU - Alarm  
OV - Alarm  
OW - Alarm  
OX - Alarm  
OY - Alarm  
OZ - Alarm  
PA - Alarm  
PB - Alarm  
PC - Alarm  
PD - Alarm  
PE - Alarm  
PF - Alarm  
PG - Alarm  
PH - Alarm  
PI - Alarm  
PJ - Alarm  
PK - Alarm  
PL - Alarm  
PM - Alarm  
PN - Alarm  
PO - Alarm  
PP - Alarm  
PQ - Alarm  
PR - Alarm  
PS - Alarm  
PT - Alarm  
PU - Alarm  
PV - Alarm  
PW - Alarm  
PX - Alarm  
PY - Alarm  
PZ - Alarm  
QA - Alarm  
QB - Alarm  
QC - Alarm  
QD - Alarm  
QE - Alarm  
QF - Alarm  
QG - Alarm  
QH - Alarm  
QI - Alarm  
QJ - Alarm  
QK - Alarm  
QL - Alarm  
QM - Alarm  
QN - Alarm  
QO - Alarm  
QP - Alarm  
QQ - Alarm  
QR - Alarm  
QS - Alarm  
QT - Alarm  
QU - Alarm  
QV - Alarm  
QW - Alarm  
QX - Alarm  
QY - Alarm  
QZ - Alarm  
RA - Alarm  
RB - Alarm  
RC - Alarm  
RD - Alarm  
RE - Alarm  
RF - Alarm  
RG - Alarm  
RH - Alarm  
RI - Alarm  
RJ - Alarm  
RK - Alarm  
RL - Alarm  
RM - Alarm  
RN - Alarm  
RO - Alarm  
RP - Alarm  
RQ - Alarm  
RR - Alarm  
RS - Alarm  
RT - Alarm  
RU - Alarm  
RV - Alarm  
RW - Alarm  
RX - Alarm  
RY - Alarm  
RZ - Alarm  
SA - Alarm  
SB - Alarm  
SC - Alarm  
SD - Alarm  
SE - Alarm  
SF - Alarm  
SG - Alarm  
SH - Alarm  
SI - Alarm  
SJ - Alarm  
SK - Alarm  
SL - Alarm  
SM - Alarm  
SN - Alarm  
SO - Alarm  
SP - Alarm  
SQ - Alarm  
SR - Alarm  
SS - Alarm  
ST - Alarm  
SU - Alarm  
SV - Alarm  
SW - Alarm  
SX - Alarm  
SY - Alarm  
SZ - Alarm  
TA - Alarm  
TB - Alarm  
TC - Alarm  
TD - Alarm  
TE - Alarm  
TF - Alarm  
TG - Alarm  
TH - Alarm  
TI - Alarm  
TJ - Alarm  
TK - Alarm  
TL - Alarm  
TM - Alarm  
TN - Alarm  
TO - Alarm  
TP - Alarm  
TQ - Alarm  
TR - Alarm  
TS - Alarm  
TT - Alarm  
TU - Alarm  
TV - Alarm  
TW - Alarm  
TX - Alarm  
TY - Alarm  
TZ - Alarm  
UA - Alarm  
UB - Alarm  
UC - Alarm  
UD - Alarm  
UE - Alarm  
UF - Alarm  
UG - Alarm  
UH - Alarm  
UI - Alarm  
UJ - Alarm  
UK - Alarm  
UL - Alarm  
UM - Alarm  
UN - Alarm  
UO - Alarm  
UP - Alarm  
UQ - Alarm  
UR - Alarm  
US - Alarm  
UT - Alarm  
UU - Alarm  
UV - Alarm  
UW - Alarm  
UX - Alarm  
UY - Alarm  
UZ - Alarm  
VA - Alarm  
VB - Alarm  
VC - Alarm  
VD - Alarm  
VE - Alarm  
VF - Alarm  
VG - Alarm  
VH - Alarm  
VI - Alarm  
VJ - Alarm  
VK - Alarm  
VL - Alarm  
VM - Alarm  
VN - Alarm  
VO - Alarm  
VP - Alarm  
VQ - Alarm  
VR - Alarm  
VS - Alarm  
VT - Alarm  
VU - Alarm  
VV - Alarm  
VW - Alarm  
VX - Alarm  
VY - Alarm  
VZ - Alarm  
WA - Alarm  
WB - Alarm  
WC - Alarm  
WD - Alarm  
WE - Alarm  
WF - Alarm  
WG - Alarm  
WH - Alarm  
WI - Alarm  
WJ - Alarm  
WK - Alarm  
WL - Alarm  
WM - Alarm  
WN - Alarm  
WO - Alarm  
WP - Alarm  
WQ - Alarm  
WR - Alarm  
WS - Alarm  
WT - Alarm  
WU - Alarm  
WV - Alarm  
WW - Alarm  
WX - Alarm  
WY - Alarm  
WZ - Alarm  
XA - Alarm  
XB - Alarm  
XC - Alarm  
XD - Alarm  
XE - Alarm  
XF - Alarm  
XG - Alarm  
XH - Alarm  
XI - Alarm  
XJ - Alarm  
XK - Alarm  
XL - Alarm  
XM - Alarm  
XN - Alarm  
XO - Alarm  
XP - Alarm  
XQ - Alarm  
XR - Alarm  
XS - Alarm  
XT - Alarm  
XU - Alarm  
XV - Alarm  
XW - Alarm  
XX - Alarm  
XY - Alarm  
XZ - Alarm  
YA - Alarm  
YB - Alarm  
YC - Alarm  
YD - Alarm  
YE - Alarm  
YF - Alarm  
YG - Alarm  
YH - Alarm  
YI - Alarm  
YJ - Alarm  
YK - Alarm  
YL - Alarm  
YM - Alarm  
YN - Alarm  
YO - Alarm  
YP - Alarm  
YQ - Alarm  
YR - Alarm  
YS - Alarm  
YT - Alarm  
YU - Alarm  
YV - Alarm  
YW - Alarm  
YX - Alarm  
YY - Alarm  
YZ - Alarm  
ZA - Alarm  
ZB - Alarm  
ZC - Alarm  
ZD - Alarm  
ZE - Alarm  
ZF - Alarm  
ZG - Alarm  
ZH - Alarm  
ZI - Alarm  
ZJ - Alarm  
ZK - Alarm  
ZL - Alarm  
ZM - Alarm  
ZN - Alarm  
ZO - Alarm  
ZP - Alarm  
ZQ - Alarm  
ZR - Alarm  
ZS - Alarm  
ZT - Alarm  
ZU - Alarm  
ZV - Alarm  
ZW - Alarm  
ZX - Alarm  
ZY - Alarm  
ZZ - Alarm

"For Reference Only"



Allies & Ross  
Management and Development Corporation  
200 Ross Street  
Pittsburgh, PA 15219

412-456-5000

**November 29, 2017**  
**Allies & Ross Management and Development Company**  
**IFB#2017-22 –E-P-H**

**Attachment 1 - Plumbing**



Buy it for looks. Buy it for life.®

# Specifications

## DESCRIPTION

- Metal construction with various finishes identified by suffix
- Pressure balancing cycle valve design with an adjustable temperature limit stop
- 1/2" IPS connections
- Includes valve, tub spout, showerhead, arm and flange


## OPERATION

- Lever style handle
- Handle operates counterclockwise through a 270° arc with off at 6 o'clock and maximum hot at the 9 o'clock position. Shut off in clockwise direction
- Adjustable temperature limit stop to control maximum hot water temperature
- Pressure balancing mechanism maintains selected discharge temperature to  $\pm 2^\circ$

## FLOW

- Showerhead is limited to 1.75 gpm (6.6 L/min) maximum and 1.3 gpm (4.9 L/min) minimum at 45 psi

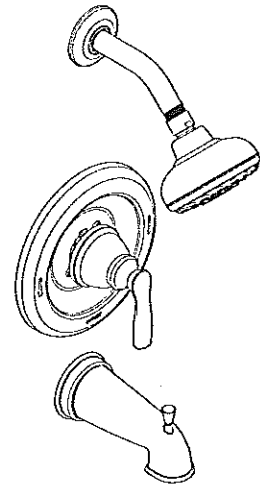
## STANDARDS

- Third party certified to ASME A112.18.1/CSA B-125.1 and all applicable requirements referenced therein
- ADA  for lever handle
- Meets WaterSense® criteria for EP suffix models and models after 10/2013
- Meets New York City Local Law No. 57 for EP suffix models and models after 10/2013

## WARRANTY

- Lifetime limited warranty against leaks, drips and finish defects to the original homeowner
- 10 year limited warranty when used in a multifamily installation
- 5 year limited warranty when used in a commercial installation

Visit [www.moen.com/support](http://www.moen.com/support) for complete details and limitations



## Hilliard™ Single-Handle Tub/Shower Valve

Models: 82537 series

